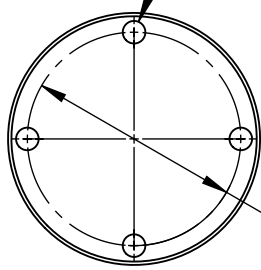




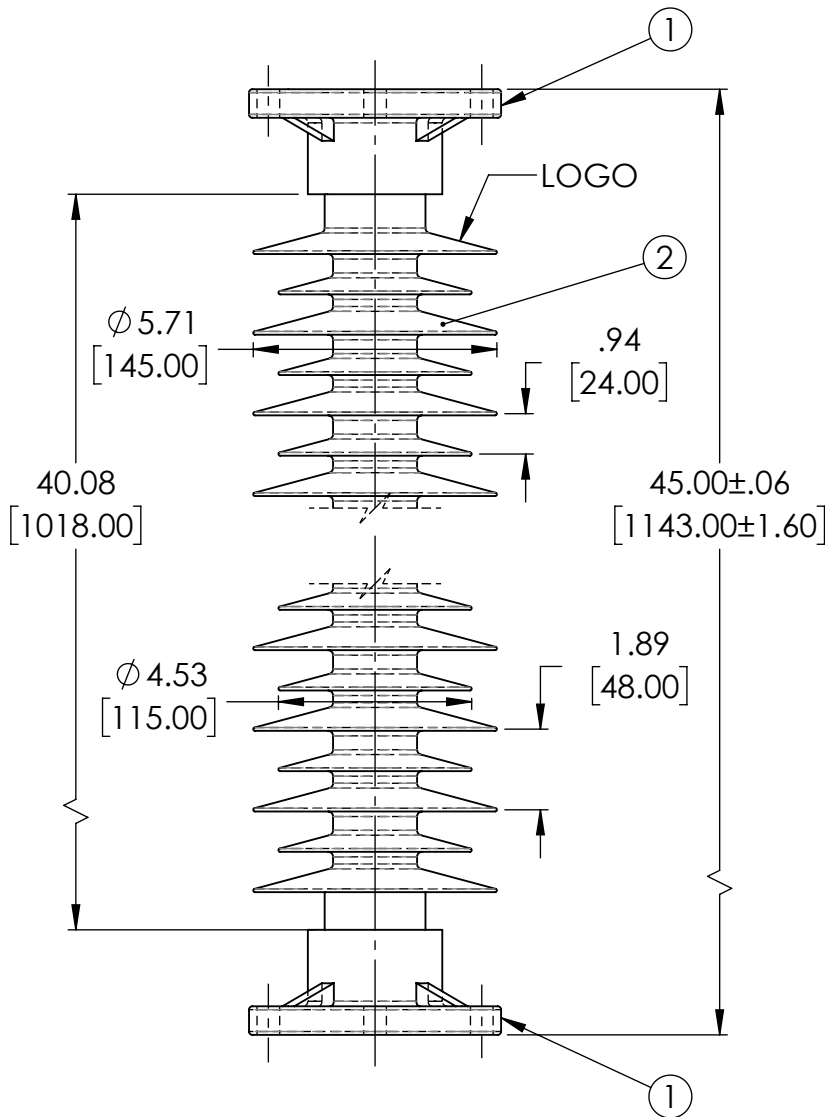
PART: NCP286-7001
 DRAWING NUMBER: Z408220214FF
 TITLE: COMPOSITE STATION POST INSULATOR-115KV

REF. TECHNICAL REFERENCE: TR286

4X 5/8-11 UNC THRU
 (TOP & BOTTOM)



Ø 5.00
 [127.00]
 PCD
 (TOP & BOTTOM)



TECHNICAL CHARACTERISTICS

MECHANICAL RATINGS

CANTILEVER STRENGTH, lbs(kN) (Upright & Underhung)	1700 (7.6)
TENSION STRENGTH, lbs (kN)	17500 (77.8)
TORSION STRENGTH, in-lbs (kN*m)	14000 (1.6)
COMPRESSION STRENGTH, lbs (kN)	17500 (77.8)
DEFLECTION @ 40%SCL, in(mm)	1.9 (48.3)

ELECTRICAL RATINGS

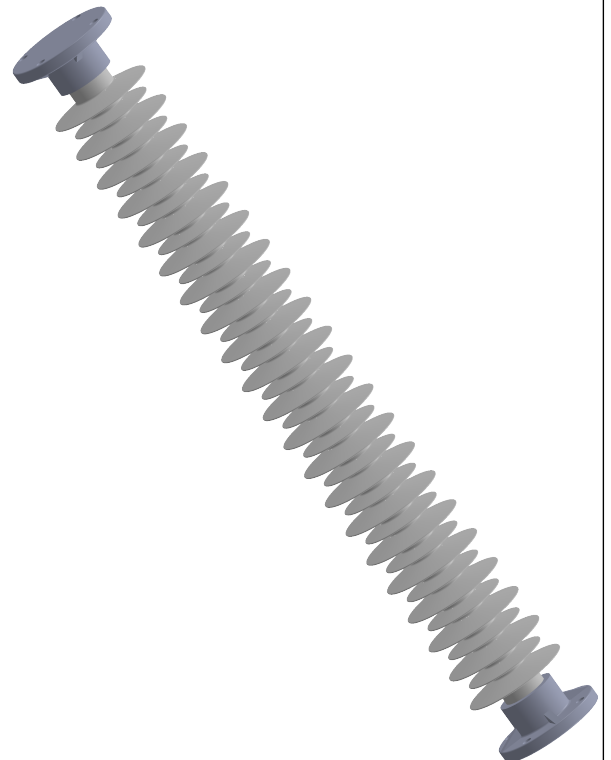
IMPULSE WITHSTAND VOLTAGE, kV	550
CRITICAL IMPULSE FLASHOVER VOLTAGE, POSITIVE, kV	610
WET POWER FREQUENCY WITHSTAND VOLTAGE, kV	230

RADIO INFLUENCE VOLTAGE RATINGS

LOW FREQUENCY TEST VOLTAGE, kV	73
MAX. RIV AT 1000kHz µV	200

PHYSICAL CHARACTERISTICS

MINIMUM LEAKAGE DISTANCE, in(mm)	106.3 (2700)
UNIT HEIGHT, in (mm)	45 (1143)
NET WEIGHT, lbs (kg)	39.4 (17.9)
COLOR	LIGHT GRAY
APPLICABLE STANDARD	ANSI C29.19



NO.	DESCRIPTION	REMARK	QTY	MATERIAL
3	CORE	Ø63.5	1	FIBERGLASS ROD
2	WEATHERSHEDS	Ø145X21+Ø115X20	1	SILICON RUBBER
1	END FITTING	-	2	GALVANIZED STEEL
DESIGNED	CHEN JUAN	10/11/2022		
DRAWN	CHEN JUAN	10/11/2022		
CHECKED	YIN PENG	10/11/2022		
APPROVED	YIN PENG	10/11/2022		