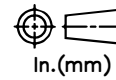


RELEASE HISTORY

a	DRAWING/DESIGN CREATED Rev.0	23.09.2011 KN
b	DRAWING REDRAWN Rev.1	22.04.2021 RVS



PART# 47862-7001

DRAWING NUMBER 212-C-1959

TITLE STATION POST INSULATOR-1300KV BIL

REF. TECHNICAL REFERENCE # TR-369

**TECHNICAL CHARACTERISTICS**

**MECHANICAL RATINGS**

CANTILEVER STRENGTH, lbs (kN) (Upright Only)	2050 (9.12)
TENSION STRENGTH, lbs (kN)	20000 (89)
TORSION STRENGTH in-lbs (kN*M)	60000 (6.8)
COMPRESSION STRENGTH lbs (kN)	60000 (267)

**ELECTRICAL RATINGS**

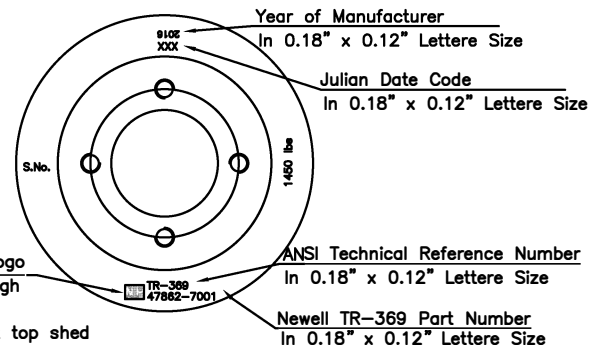
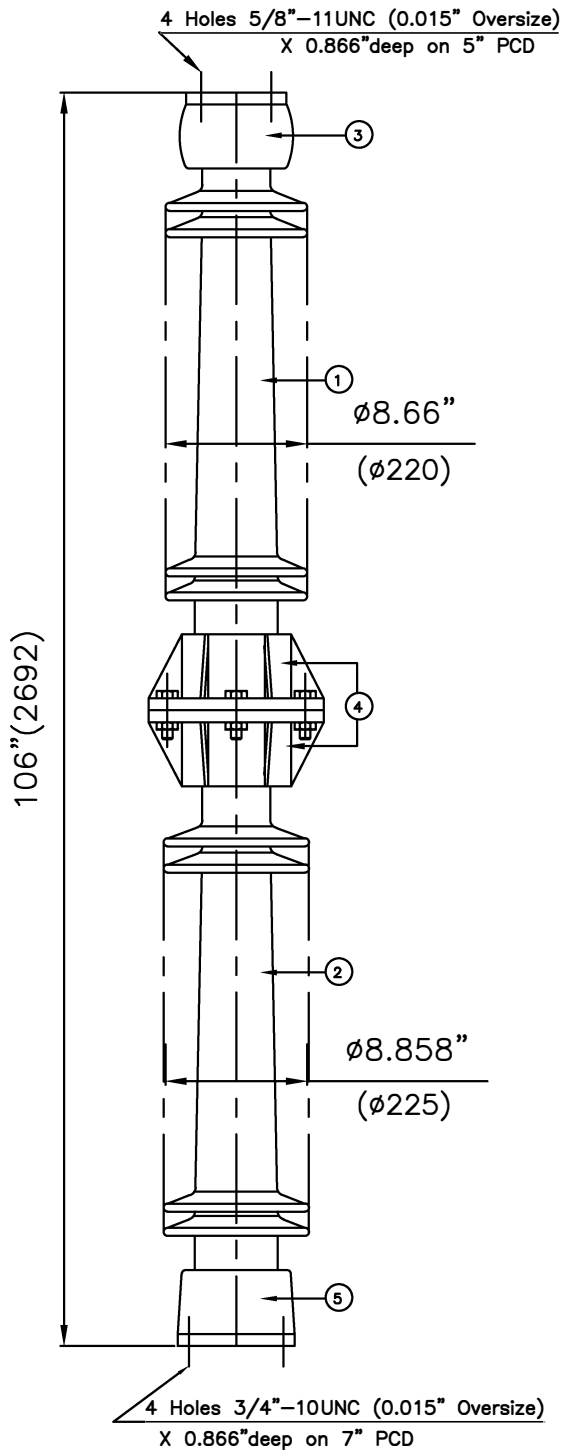
IMPULSE WITHSTAND VOLTAGE, kV	1300
CRITICAL IMPULSE FLASHOVER VOLTAGE, POSITIVE, kV	1410
WET POWER FREQUENCY WITHSTAND VOLTAGE, kV	525

**RADIO INFLUENCE VOLTAGE RATINGS**

LOW FREQUENCY TEST VOLTAGE, kV	220
MAX. RIV AT 1000 kHz, $\mu$ V	1000

**PHYSICAL CHARACTERISTICS**

MINIMUM LEAKAGE DISTANCE, in (mm)	231 (5868)
UNIT HEIGHT, in (mm)	106 (2692)
NET WEIGHT, lbs (kg)	390 (177)
GLAZE COLOR	Light Gray
APPLICABLE STANDARD:ANSI:C29.9 & IEC:60168,273 & IS:2544, 5350	



3,4 & 5	Caps & Flange	MCI/SGI	Hot dip.galv.
1,2	Insulator body	Porcelain	Grey Glazed
S.No.	DESCRIPTION	MATERIAL	REMARKS

REF.212-C-1959	DWG.TYPE SALES	DWN. RVS	APP.
----------------	----------------	----------	------