

Pole Bands

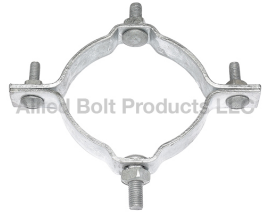
SINGLE AND DOUBLE OFFSET POLE BANDS

SINGLE OFFSET POLE BAND



PART#	DESCRIPTION	PKG QTY	CTN QTY	CTN WT.
1118	SINGLE OFFSET POLE BAND 4-1/2" TO 5"	20	1	41
1113	SINGLE OFFSET POLE BAND 6" TO 6-3/4"	15	1	43
1117	SINGLE OFFSET POLE BAND 7" TO 7-3/4"	10	1	40
1114	SINGLE OFFSET POLE BAND 8" TO 8-3/4"	10	1	43

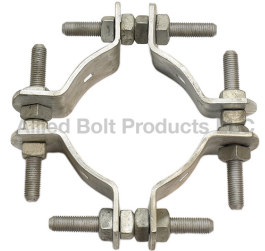
DOUBLE OFFSET POLE BAND



PART#	DESCRIPTION	PKG QTY	CTN QTY	CTN WT.
1111	DOUBLE OFFSET POLE BAND 6" TO 6-3/4"	10	1	32
1116	DOUBLE OFFSET POLE BAND 7" TO 7-3/4"	10	1	52
1112	DOUBLE OFFSET POLE BAND 8" TO 8-3/4"	10	1	55

ADJUSTABLE POLE BAND

ADJUSTABLE POLE BAND



PART#	DESCRIPTION	PKG QTY	CTN QTY	CTN WT.
3108	ADJUSTABLE POLE BAND 7" TO 9-1/2"	1	1	15
3110	ADJUSTABLE POLE BAND 8" TO 11"	1	1	30
3109	ADJUSTABLE POLE BAND 9-1/2" TO 13-1/2"	1	1	19
3111	ADJUSTABLE POLE BAND 12" TO 16"	2	1	35

POLE BAND LINK ASSEMBLY

POLE BAND LINK ASSEMBLY



PART#	DESCRIPTION	PKG QTY	CTN QTY	CTN WT.
1119	POLE BAND LINK ASSEMBLY	10	1	33

ROLLER



PART#	DESCRIPTION	PKG QTY	CTN QTY	CTN WT.
1122	ROLLER (ONLY)	25	1	16

PAIR OF LINK PLATES



PART#	DESCRIPTION	PKG QTY	CTN QTY	CTN WT.
1123	PAIR OF LINK PLATES (ONLY)	20	1	53

Nuts and Lock Nuts

FORGED GALVANIZED WASHER NUT

FORGED GALVANIZED WASHER NUT



PART#	DESCRIPTION	PKG QTY	CTN QTY	CTN WT.
7006	5/8"-11 FORGED GALVANIZED WASHER NUT	1	130	44
7007	3/4"-10 FORGED GALVANIZED WASHER NUT	1	100	45

REGULAR SQUARE NUT

REGULAR SQUARE NUT



PART#	DESCRIPTION	PKG QTY	CTN QTY	CTN WT.
90044	3/8" REGULAR SQUARE NUT	100	8	32
8205	1/2" REGULAR SQUARE NUT	100	4	22
8206	5/8" REGULAR SQUARE NUT	100	1	11
8200	3/4" 10 REGULAR SQUARE NUT	100	1	16
8201	7/8" REGULAR SQUARE NUT	100	1	28
8375	1" REGULAR SQUARE NUT	50	1	18

CONCAVE LOCKNUT

CONCAVE SQUARE LOCKNUT



PART#	DESCRIPTION	PKG QTY	CTN QTY	CTN WT.
22016	3/8" CONCAVE SQUARE LOCKNUT	100	32	43
22009	1/2" CONCAVE SQUARE LOCKNUT	100	10	30
22010	5/8" CONCAVE SQUARE LOCKNUT	100	10	53
22011	3/4" CONCAVE SQUARE LOCKNUT	100	6	49
22014	7/8" CONCAVE SQUARE LOCKNUT	100	4	34
22015	1" CONCAVE SQUARE LOCKNUT	100	4	44

PALNUT TYPE LOCKNUT

Low Profile Hex Locknut



PART#	DESCRIPTION	PKG QTY	CTN QTY	CTN WT.
7851	3/8" LOW PROFILE HEX LOCKNUT	100	16	16
7852	1/2" LOW PROFILE HEX LOCKNUT	100	16	13
7853	5/8" LOW PROFILE HEX LOCKNUT	100	16	15
7854	3/4" LOW PROFILE HEX LOCKNUT	100	8	15
7855	7/8" LOW PROFILE HEX LOCKNUT	100	4	11

Poleline Bolts

SQUARE HEAD MACHINE BOLT WITH NUT 316SS

5/8" SQUARE HEAD MACHINE BOLT WITH NUT 316SS



PART#	DESCRIPTION	PKG QTY	CTN QTY	CTN WT.
8222SS	5/8" X 10" SQUARE HEAD MACHINE BOLT WITH NUT 316SS	40	1	38
8220SS	5/8" X 8" SQUARE HEAD MACHINE BOLT WITH NUT 316SS	20	1	15
8224SS	5/8" X 12" SQUARE HEAD MACHINE BOLT WITH NUT 316SS	40	1	45
8226SS	5/8" X 14" SQUARE HEAD MACHINE BOLT WITH NUT 316SS	40	1	51
8228SS	5/8" X 16" SQUARE HEAD MACHINE BOLT WITH NUT 316SS	30	1	42

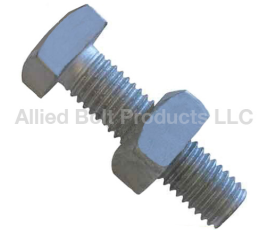


3/4" SQUARE HEAD MACHINE BOLT WITH NUT 316SS

PART#	DESCRIPTION	PKG QTY	CTN QTY	CTN WT.
8240SS	3/4" X 10" SQUARE HEAD MACHINE BOLT WITH NUT 316SS	30	1	45
8242SS	3/4" X 12" SQUARE HEAD MACHINE BOLT WITH NUT 316SS	20	1	34
8244SS	3/4" X 14" SQUARE HEAD MACHINE BOLT WITH NUT 316SS	20	1	39
8246SS	3/4" X 16" SQUARE HEAD MACHINE BOLT WITH NUT 316SS	20	1	40
8250SS	3/4" X 20" SQUARE HEAD MACHINE BOLT WITH NUT 316SS	10	1	28

SQUARE HEAD MACHINE BOLT

1/4" SQUARE HEAD MACHINE BOLT WITH NUT



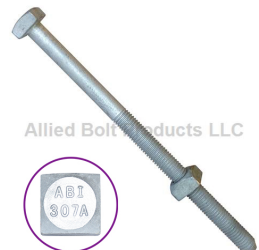
PART#	DESCRIPTION	PKG QTY	CTN QTY	CTN WT.
648	1/4" x 1" SQUARE HEAD MACHINE BOLT WITH NUT	100	16	48

3/8" SQUARE HEAD MACHINE BOLT WITH NUT



PART#	DESCRIPTION	PKG QTY	CTN QTY	CTN WT.
647	3/8" X 1" SQUARE HEAD MACHINE BOLT WITH NUT	100	4	28
649	3/8" X 1-1/2" SQUARE HEAD MACHINE BOLT WITH NUT	50	8	34
650	3/8" X 2" SQUARE HEAD MACHINE BOLT WITH NUT	50	4	36
651	3/8" X 2-1/2" SQUARE HEAD MACHINE BOLT WITH NUT	50	4	22
652	3/8" X 3" SQUARE HEAD MACHINE BOLT WITH NUT	50	4	25
65212	3/8" X 3-1/2" SQUARE HEAD MACHINE BOLT WITH NUT	25	4	0
8211	3/8" x 4" SQUARE HEAD MACHINE BOLT WITH NUT	100	1	17
661	3/8" x 4-1/2" SQUARE HEAD MACHINE BOLT WITH NUT	50	4	24
8212	3/8" X 5" SQUARE HEAD MACHINE BOLT WITH NUT	100	1	18
8213	3/8" X 5-1/2" SQUARE HEAD MACHINE BOLT WITH NUT	100	1	18
6660	3/8" X 6" SQUARE HEAD MACHINE BOLT WITH NUT	100	1	26

3/8" SQUARE HEAD MACHINE BOLT WITH NUT (W/ CONE POINT)



PART#	DESCRIPTION	PKG QTY	CTN QTY	CTN WT.
8216	3/8" X 7" SQUARE HEAD MACHINE BOLT WITH NUT	100	1	25
8217	3/8" X 8" SQUARE HEAD MACHINE BOLT WITH NUT	100	1	30

1/2" SQUARE HEAD MACHINE BOLT WITH NUT



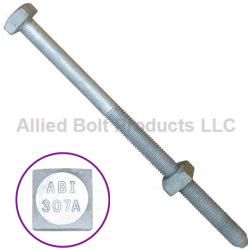
PART#	DESCRIPTION	PKG QTY	CTN QTY	CTN WT.
236	1/2" X 1" SQUARE HEAD MACHINE BOLT WITH NUT	100	1	13
8202	1/2" X 1-1/4" SQUARE HEAD MACHINE BOLT WITH NUT	100	1	16
8920	1/2" X 1-1/2" SQUARE HEAD MACHINE BOLT WITH NUT	100	1	20
251	1/2" X 1-3/4" SQUARE HEAD MACHINE BOLT WITH NUT	100	1	20
10035	1/2" X 2" SQUARE HEAD MACHINE BOLT WITH NUT	100	1	20
8239	1/2" X 2-1/2" SQUARE HEAD MACHINE BOLT WITH NUT	100	1	23
10036	1/2" X 3" SQUARE HEAD MACHINE BOLT WITH NUT	100	1	25
100365	1/2" X 3-1/2" SQUARE HEAD MACHINE BOLT WITH NUT	100	1	30
10037	1/2" X 4" SQUARE HEAD MACHINE BOLT WITH NUT	100	1	29
8208	1/2" X 4-1/2" SQUARE HEAD MACHINE BOLT WITH NUT	100	1	29
10038	1/2" X 5" SQUARE HEAD MACHINE BOLT WITH NUT	100	1	33
8209	1/2" X 6" SQUARE HEAD MACHINE BOLT WITH NUT	100	1	41

1/2" SQUARE HEAD MACHINE BOLT (NUT NOT INCLUDED)



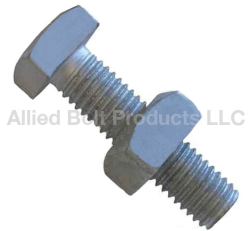
PART#	DESCRIPTION	PKG QTY	CTN QTY	CTN WT.
8203	1/2" X 2 1/2" SQUARE HEAD MACHINE BOLT	100	1	23

1/2" SQUARE HEAD MACHINE BOLT WITH NUT (W/ CONE POINT)

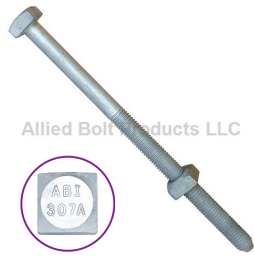


PART#	DESCRIPTION	PKG QTY	CTN QTY	CTN WT.
7930	1/2" x 7" SQUARE HEAD MACHINE BOLT WITH NUT	100	1	47
8110	1/2" X 8" SQUARE HEAD MACHINE BOLT WITH NUT	100	1	48
8922	1/2" X 9" SQUARE HEAD MACHINE BOLT WITH NUT	75	1	42
8111	1/2" X 10" SQUARE HEAD MACHINE BOLT WITH NUT	75	1	47
8112	1/2" X 12" SQUARE HEAD MACHINE BOLT WITH NUT	50	1	36
8210	1/2" X 14" SQUARE HEAD MACHINE BOLT WITH NUT	50	1	40
8924	1/2" X 16" SQUARE HEAD MACHINE BOLT WITH NUT	40	1	32
8925	1/2" X 18" SQUARE HEAD MACHINE BOLT WITH NUT	40	1	32
8927	1/2" X 20" SQUARE HEAD MACHINE BOLT WITH NUT	25	1	24
8932	1/2" X 22" SQUARE HEAD MACHINE BOLT WITH NUT	25	1	30
8934	1/2" X 24" SQUARE HEAD MACHINE BOLT WITH NUT	25	1	28

5/8" SQUARE HEAD MACHINE BOLT WITH NUT



PART#	DESCRIPTION	PKG QTY	CTN QTY	CTN WT.
8117	5/8" x 1" SQUARE HEAD MACHINE BOLT WITH NUT	50	1	14
8120	5/8" X 1-1/4" SQUARE HEAD MACHINE BOLT WITH NUT	100	1	12
8121	5/8" X 1-1/2" SQUARE HEAD MACHINE BOLT WITH NUT	100	1	33
8119	5/8" X 1-3/4" SQUARE HEAD MACHINE BOLT WITH NUT	100	1	17
8122	5/8" X 2" SQUARE HEAD MACHINE BOLT WITH NUT	100	1	39
8123	5/8" X 2-1/2" SQUARE HEAD MACHINE BOLT WITH NUT	100	1	41
8124	5/8" X 3" SQUARE HEAD MACHINE BOLT WITH NUT	50	1	22
8118	5/8" X 3-1/2" SQUARE HEAD MACHINE BOLT WITH NUT	50	1	17
8125	5/8" X 4" SQUARE HEAD MACHINE BOLT WITH NUT	100	1	48
8127	5/8" X 4-1/2" SQUARE HEAD MACHINE BOLT WITH NUT	50	1	22
8126	5/8" X 5" SQUARE HEAD MACHINE BOLT WITH NUT	20	1	12
8204	5/8" X 5-1/2" SQUARE HEAD MACHINE BOLT WITH NUT	100	1	61
8214	5/8" X 6" SQUARE HEAD MACHINE BOLT WITH NUT	50	1	43



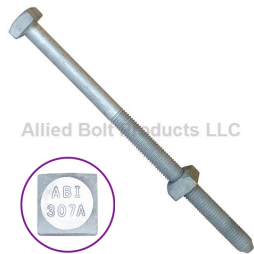
5/8" SQUARE HEAD MACHINE BOLT WITH NUT (W/ CONE POINT)

PART#	DESCRIPTION	PKG QTY	CTN QTY	CTN WT.
8215	5/8" X 7" SQUARE HEAD MACHINE BOLT WITH NUT	50	1	36
8220	5/8" X 8" SQUARE HEAD MACHINE BOLT WITH NUT	50	1	45
8926	5/8" X 9" SQUARE HEAD MACHINE BOLT WITH NUT	50	1	45
8222	5/8" X 10" SQUARE HEAD MACHINE BOLT WITH NUT	40	1	38
8224	5/8" X 12" SQUARE HEAD MACHINE BOLT WITH NUT	40	1	45
8226	5/8" X 14" SQUARE HEAD MACHINE BOLT WITH NUT	40	1	51
8228	5/8" X 16" SQUARE HEAD MACHINE BOLT WITH NUT	30	1	42
8230	5/8" X 18" SQUARE HEAD MACHINE BOLT WITH NUT	30	1	48
8232	5/8" X 20" SQUARE HEAD MACHINE BOLT WITH NUT	20	1	44
8234	5/8" X 22" SQUARE HEAD MACHINE BOLT WITH NUT	20	1	32
8236	5/8" X 24" SQUARE HEAD MACHINE BOLT WITH NUT	20	1	38
10048	5/8" X 26" SQUARE HEAD MACHINE BOLT WITH NUT	20	1	44
8237	5/8" X 28" SQUARE HEAD MACHINE BOLT WITH NUT	20	1	50
8235	5/8" X 30" SQUARE HEAD MACHINE BOLT WITH NUT	15	1	36
8928	5/8" X 32" SQUARE HEAD MACHINE BOLT WITH NUT	15	1	39
8929	5/8" X 34" SQUARE HEAD MACHINE BOLT WITH NUT	15	1	42
8931	5/8" X 36" SQUARE HEAD MACHINE BOLT WITH NUT	15	1	45
8935	5/8" X 40" SQUARE HEAD MACHINE BOLT WITH NUT	5	1	16



3/4" SQUARE HEAD MACHINE BOLT WITH NUT

PART#	DESCRIPTION	PKG QTY	CTN QTY	CTN WT.
8150	3/4" X 2" SQUARE HEAD MACHINE BOLT WITH NUT	100	1	38
8151	3/4" X 3" SQUARE HEAD MACHINE BOLT WITH NUT	100	1	64
8152	3/4" X 4" SQUARE HEAD MACHINE BOLT WITH NUT	100	1	46
8153	3/4" X 6" SQUARE HEAD MACHINE BOLT WITH NUT	50	1	48



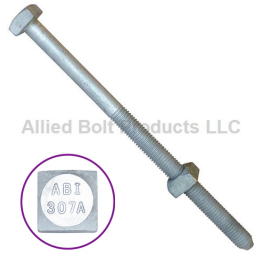
3/4" SQUARE HEAD MACHINE BOLT WITH NUT (W/ CONE POINT)

PART#	DESCRIPTION	PKG QTY	CTN QTY	CTN WT.
8238	3/4" X 8" SQUARE HEAD MACHINE BOLT WITH NUT	40	1	48
8240	3/4" X 10" SQUARE HEAD MACHINE BOLT WITH NUT	30	1	35
8242	3/4" X 12" SQUARE HEAD MACHINE BOLT WITH NUT	20	1	34
8244	3/4" X 14" SQUARE HEAD MACHINE BOLT WITH NUT	20	1	39
8246	3/4" X 16" SQUARE HEAD MACHINE BOLT WITH NUT	20	1	44
8248	3/4" X 18" SQUARE HEAD MACHINE BOLT WITH NUT	20	1	47
8250	3/4" X 20" SQUARE HEAD MACHINE BOLT WITH NUT	20	1	56
8252	3/4" X 22" SQUARE HEAD MACHINE BOLT WITH NUT	10	1	32
8254	3/4" X 24" SQUARE HEAD MACHINE BOLT WITH NUT	10	1	36
8255	3/4" X 26" SQUARE HEAD MACHINE BOLT WITH NUT	10	1	31
8259	3/4" X 28" SQUARE HEAD MACHINE BOLT WITH NUT	10	1	35
8930	3/4" X 30" SQUARE HEAD MACHINE BOLT WITH NUT	10	1	40
82623	3/4" X 32" SQUARE HEAD MACHINE BOLT WITH NUT	10	1	40
82624	3/4" X 34" SQUARE HEAD MACHINE BOLT WITH NUT	10	1	40
82625	3/4" X 36" SQUARE HEAD MACHINE BOLT WITH NUT	10	1	42



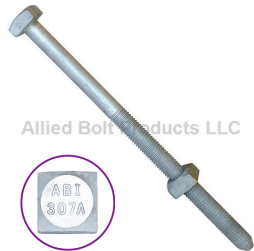
7/8" SQUARE HEAD MACHINE BOLT WITH NUT

PART#	DESCRIPTION	PKG QTY	CTN QTY	CTN WT.
82410	7/8" X 3" SQUARE HEAD MACHINE BOLT WITH NUT	50	1	50



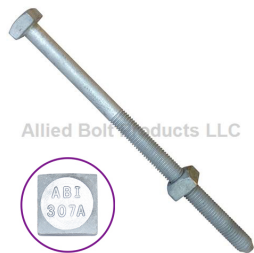
7/8" SQUARE HEAD MACHINE BOLT WITH NUT (W/ CONE POINT)

PART#	DESCRIPTION	PKG QTY	CTN QTY	CTN WT.
8970	7/8" X 12" SQUARE HEAD MACHINE BOLT WITH NUT	15	1	35
8971	7/8" X 14" SQUARE HEAD MACHINE BOLT WITH NUT	15	1	40
8972	7/8" X 16" SQUARE HEAD MACHINE BOLT WITH NUT	15	1	45
8256	7/8" X 18" SQUARE HEAD MACHINE BOLT WITH NUT	10	1	34
8257	7/8" X 20" SQUARE HEAD MACHINE BOLT WITH NUT	8	1	29
8973	7/8" X 22" SQUARE HEAD MACHINE BOLT WITH NUT	8	1	30
8606	7/8" X 24" SQUARE HEAD MACHINE BOLT WITH NUT	8	1	32
8607	7/8" X 26" SQUARE HEAD MACHINE BOLT WITH NUT	8	1	34
8608	7/8" X 28" SQUARE HEAD MACHINE BOLT WITH NUT	8	1	39
8609	7/8" X 30" SQUARE HEAD MACHINE BOLT WITH NUT	8	1	40
8610	7/8" X 32" SQUARE HEAD MACHINE BOLT WITH NUT	8	1	42
8611	7/8" X 34" SQUARE HEAD MACHINE BOLT WITH NUT	8	1	44
8612	7/8" X 36" SQUARE HEAD MACHINE BOLT WITH NUT	8	1	46
8620	7/8" X 38" SQUARE HEAD MACHINE BOLT WITH NUT	5	1	34
8622	7/8" X 40" SQUARE HEAD MACHINE BOLT WITH NUT	5	1	38
8624	7/8" X 42" SQUARE HEAD MACHINE BOLT WITH NUT	5	1	39
8626	7/8" X 44" SQUARE HEAD MACHINE BOLT WITH NUT	5	1	41
8628	7/8" X 46" SQUARE HEAD MACHINE BOLT WITH NUT	5	1	43
8629	7/8" X 48" SQUARE HEAD MACHINE BOLT WITH NUT	5	1	45



1" SQUARE HEAD MACHINE BOLT WITH NUT (W/ CONE POINT)

PART#	DESCRIPTION	PKG QTY	CTN QTY	CTN WT.
8292	1" X 12" SQUARE HEAD MACHINE BOLT WITH NUT	12	1	32
8293	1" X 14" SQUARE HEAD MACHINE BOLT WITH NUT	12	1	36
8294	1" X 16" SQUARE HEAD MACHINE BOLT WITH NUT	10	1	31
8297	1" X 18" SQUARE HEAD MACHINE BOLT WITH NUT	7	1	28
8295	1" X 20" SQUARE HEAD MACHINE BOLT WITH NUT	7	1	30
8298	1" X 22" SQUARE HEAD MACHINE BOLT WITH NUT	7	1	35
8299	1" X 24" SQUARE HEAD MACHINE BOLT WITH NUT	7	1	41
82995	1" X 26" SQUARE HEAD MACHINE BOLT WITH NUT	6	1	44
82994	1" X 28" SQUARE HEAD MACHINE BOLT WITH NUT	6	1	40
82996	1" X 30" SQUARE HEAD MACHINE BOLT WITH NUT	7	1	49
82999	1" X 32" SQUARE HEAD MACHINE BOLT WITH NUT	7	1	52
83000	1" X 34" SQUARE HEAD MACHINE BOLT WITH NUT	7	1	52
83001	1" X 36" SQUARE HEAD MACHINE BOLT WITH NUT	7	1	52



1-1/4" SQUARE HEAD MACHINE BOLT WITH NUT (W/ CONE POINT)

PART#	DESCRIPTION	PKG QTY	CTN QTY	CTN WT.
97610	1-1/4" X 36" SQUARE HEAD MACHINE BOLT WITH NUT	5	1	72



ANCHOR BOLT HDG
1/2" ANCHOR BOLT HDG

PART#	DESCRIPTION	PKG QTY	CTN QTY	CTN WT.
-------	-------------	---------	---------	---------



Allied Bolt Products LLC

5/8" ANCHOR BOLT HDG

PART#	DESCRIPTION	PKG QTY	CTN QTY	CTN WT.
-------	-------------	---------	---------	---------



Allied Bolt Products LLC

3/4" ANCHOR BOLT HDG

PART#	DESCRIPTION	PKG QTY	CTN QTY	CTN WT.
-------	-------------	---------	---------	---------



Allied Bolt Products LLC

A CABLE SUSPENSION BOLT

5/8" A CABLE SUSPENSION BOLT

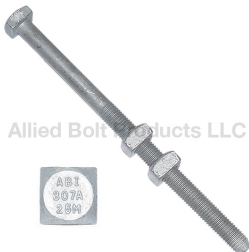
PART#	DESCRIPTION	PKG QTY	CTN QTY	CTN WT.
8280	5/8" X 8" A CABLE SUSPENSION BOLT	50	1	42
8281	5/8" X 10" A CABLE SUSPENSION BOLT	40	1	42
8282	5/8" X 12" A CABLE SUSPENSION BOLT	40	1	41
8283	5/8" X 14" A CABLE SUSPENSION BOLT	40	1	50
8284	5/8" X 16" A CABLE SUSPENSION BOLT	30	1	40
8285	5/8" X 18" A CABLE SUSPENSION BOLT	30	1	48
8286	5/8" X 20" A CABLE SUSPENSION BOLT	20	1	34
8287	5/8" X 22" A CABLE SUSPENSION BOLT	20	1	43
8288	5/8" X 24" A CABLE SUSPENSION BOLT	20	1	50
8289	5/8" X 26" A CABLE SUSPENSION BOLT	20	1	52
8290	5/8" X 28" A CABLE SUSPENSION BOLT	20	1	45



Allied Bolt Products LLC

3/4" A CABLE SUSPENSION BOLT

PART#	DESCRIPTION	PKG QTY	CTN QTY	CTN WT.
8300	3/4" X 10" A CABLE SUSPENSION BOLT	30	1	34
8301	3/4" X 12" A CABLE SUSPENSION BOLT	20	1	30
8302	3/4" X 14" A CABLE SUSPENSION BOLT	20	1	34
8304	3/4" X 16" A CABLE SUSPENSION BOLT	20	1	40
8305	3/4" X 18" A CABLE SUSPENSION BOLT	20	1	46
8306	3/4" X 20" A CABLE SUSPENSION BOLT	20	1	52
8315	3/4" X 22" A CABLE SUSPENSION BOLT	10	1	30
8307	3/4" X 24" A CABLE SUSPENSION BOLT	10	1	30
8308	3/4" X 26" A CABLE SUSPENSION BOLT	10	1	42



Allied Bolt Products LLC

1" A CABLE SUSPENSION BOLT

PART#	DESCRIPTION	PKG QTY	CTN QTY	CTN WT.
8160	1" X 12" A CABLE SUSPENSION BOLT	12	1	44
8161	1" X 14" A CABLE SUSPENSION BOLT	12	1	47
8162	1" X 16" A CABLE SUSPENSION BOLT	10	1	44
8163	1" X 18" A CABLE SUSPENSION BOLT	10	1	44



A CABLE SUSPENSION BOLT 316 STAINLESS STEEL

5/8" A CABLE SUSPENSION BOLT 316 STAINLESS STEEL

PART#	DESCRIPTION	PKG QTY	CTN QTY	CTN WT.
8280SS	5/8" X 8" A CABLE SUSPENSION BOLT 316 STAINLESS STEEL	50	1	47
8281SS	5/8" X 10" A CABLE SUSPENSION BOLT 316 STAINLESS STEEL	40	1	45
8291SS	5/8" X 11" A CABLE SUSPENSION BOLT 316 STAINLESS STEEL	40	1	46
8282SS	5/8" X 12" A CABLE SUSPENSION BOLT 316 STAINLESS STEEL	40	1	49
8283SS	5/8" X 14" A CABLE SUSPENSION BOLT 316 STAINLESS STEEL	40	1	55
8284SS	5/8" X 16" A CABLE SUSPENSION BOLT 316 STAINLESS STEEL	30	1	45



3/4" A CABLE SUSPENSION BOLT 316 STAINLESS STEEL

PART#	DESCRIPTION	PKG QTY	CTN QTY	CTN WT.
8300SS	3/4" X 10" A CABLE SUSPENSION BOLT 316 STAINLESS STEEL	30	1	48
8301SS	3/4" X 12" A CABLE SUSPENSION BOLT 316 STAINLESS STEEL	20	1	36
8302SS	3/4" X 14" A CABLE SUSPENSION BOLT 316 STAINLESS STEEL	20	1	40
8304SS	3/4" X 16" A CABLE SUSPENSION BOLT 316 STAINLESS STEEL	20	1	45



ASTM A325-3 DOUBLE END STUD W/ 2 DH3 HVY HEX NUTS

PART#	DESCRIPTION	PKG QTY	CTN QTY	CTN WT.
59801	3/4" X 16" DOUBLE ENDED STUD ASTM A325-3 W/ 2 DH3 HEAVY HEX NUTS	20	1	32
59802	3/4" X 18" DOUBLE ENDED STUD ASTM A325-3 W/ 2 DH3 HEAVY HEX NUTS	20	1	35
59803	3/4" X 20" DOUBLE ENDED STUD ASTM A325-3 W/ 2 DH3 HEAVY HEX NUTS	20	1	38
59804	3/4" X 22" DOUBLE ENDED STUD ASTM A325-3 W/ 2 DH3 HEAVY HEX NUTS	10	1	41
59805	3/4" X 24" DOUBLE ENDED STUD ASTM A325-3 W/ 2 DH3 HEAVY HEX NUTS	10	1	44



ASTM A325-3 HEAVY HEX STRUCTURAL BOLT W/ DH3 NUT

PART#	DESCRIPTION	PKG QTY	CTN QTY	CTN WT.
59901	3/4" X 12" HEAVY HEX BOLT A325 TYPE3 W/ DH3 HEAVY HEX NUT	20	1	25
59902	3/4" X 14" HEAVY HEX BOLT A325 TYPE3 W/ DH3 HEAVY HEX NUT	20	1	28
59903	3/4" X 16" HEAVY HEX BOLT A325 TYPE3 W/ DH3 HEAVY HEX NUT	20	1	31
59904	3/4" X 18" HEAVY HEX BOLT A325 TYPE3 W/ DH3 HEAVY HEX NUT	20	1	34
59905	3/4" X 20" HEAVY HEX BOLT A325 TYPE3 W/ DH3 HEAVY HEX NUT	20	1	37
59906	3/4" X 22" HEAVY HEX BOLT A325 TYPE3 W/ DH3 HEAVY HEX NUT	10	1	41
59907	3/4" X 24" HEAVY HEX BOLT A325 TYPE3 W/ DH3 HEAVY HEX NUT	10	1	44
59908	3/4" X 26" HEAVY HEX BOLT A325 TYPE3 W/ DH3 HEAVY HEX NUT	10	1	47
59915	3/4" X 30" HEAVY HEX BOLT A325 TYPE3 W/ DH3 HEAVY HEX NUT	10	1	50
59917	3/4" X 32" HEAVY HEX BOLT A325 TYPE3 W/ DH3 HEAVY HEX NUT	10	1	53



J-HOOK ASSEMBLY

J-Hook Assembly

PART#	DESCRIPTION	PKG QTY	CTN QTY	CTN WT.
5920	5/8" X 20" J-HOOK ASSEMBLY	20	1	44



DOUBLE ARMING BOLT

3/8" DOUBLE ARMING BOLT



Allied Bolt Products LLC

PART#	DESCRIPTION	PKG QTY	CTN QTY	CTN WT.
59750	3/8" X 8" DOUBLE ARMING BOLT	25	1	8

1/2" DOUBLE ARMING BOLT



Allied Bolt Products LLC

PART#	DESCRIPTION	PKG QTY	CTN QTY	CTN WT.
8390	1/2" X 6" DOUBLE ARMING BOLT	50	1	36
8395	1/2" X 8" DOUBLE ARMING BOLT	25	1	16
59752	1/2" X 12" DOUBLE ARMING BOLT	25	1	22
59755	1/2" X 18" DOUBLE ARMING BOLT	25	1	21
59757	1/2" X 22" DOUBLE ARMING BOLT	25	1	28

5/8" DOUBLE ARMING BOLT



Allied Bolt Products LLC

PART#	DESCRIPTION	PKG QTY	CTN QTY	CTN WT.
5950	5/8" X 10" DOUBLE ARMING BOLT	40	1	52
5952	5/8" X 12" DOUBLE ARMING BOLT	40	1	50
5954	5/8" X 14" DOUBLE ARMING BOLT	35	1	58
5956	5/8" X 16" DOUBLE ARMING BOLT	30	1	45
5958	5/8" X 18" DOUBLE ARMING BOLT	30	1	57
5960	5/8" X 20" DOUBLE ARMING BOLT	20	1	40
5962	5/8" X 22" DOUBLE ARMING BOLT	20	1	42
5964	5/8" X 24" DOUBLE ARMING BOLT	20	1	44
5966	5/8" X 26" DOUBLE ARMING BOLT	20	1	46
5968	5/8" X 28" DOUBLE ARMING BOLT	20	1	52
5970	5/8" X 30" DOUBLE ARMING BOLT	15	1	40
5972	5/8" X 32" DOUBLE ARMING BOLT	15	1	42
5974	5/8" X 34" DOUBLE ARMING BOLT	15	1	48
5976	5/8" X 36" DOUBLE ARMING BOLT	15	1	50
6009	5/8" x 40" DOUBLE ARMING BOLT	7	1	26
6705	5/8" x 42" DOUBLE ARMING BOLT	7	1	27
6706	5/8" X 44" DOUBLE ARMING BOLT	7	1	27
6707	5/8" X 46" DOUBLE ARMING BOLT	7	1	30
6105	5/8" X 48" DOUBLE ARMING BOLT	7	1	30
9997966	5/8" X 60" DOUBLE ARMING BOLT	5	1	24

5/8" DOUBLE ARMING BOLT WITH 2 NUTS



Allied Bolt Products LLC

PART#	DESCRIPTION	PKG QTY	CTN QTY	CTN WT.
5950-2	5/8" X 10" DOUBLE ARMING BOLT WITH 2 NUTS	40	1	50
5976-2	5/8" X 36" DOUBLE ARMING BOLT WITH 2 NUTS	15	1	46



Poleline Hardware Catalog

September 23, 2024



Allied Bolt Products LLC

5/8" DOUBLE ARMING BOLT WITH 6 NUTS

PART#	DESCRIPTION	PKG QTY	CTN QTY	CTN WT.
5970X6	5/8" X 30" DOUBLE ARMING BOLT WITH 6 SQUARE NUT	15	1	44
5976X6	5/8" X 36" DOUBLE ARMING BOLT WITH 6 SQUARE NUT	15	1	52



Allied Bolt Products LLC

3/4" DOUBLE ARMING BOLT

PART#	DESCRIPTION	PKG QTY	CTN QTY	CTN WT.
59780	3/4" x 6" DOUBLE ARMING BOLT	25	1	24
5973	3/4" x 7" DOUBLE ARMING BOLT	25	1	28
5975	3/4" X 8" DOUBLE ARMING BOLT	25	1	28
5977	3/4" x 10" DOUBLE ARMING BOLT	30	1	40
5978	3/4" X 12" DOUBLE ARMING BOLT	20	1	40
5980	3/4" X 14" DOUBLE ARMING BOLT	20	1	44
5982	3/4" X 16" DOUBLE ARMING BOLT	20	1	48
5984	3/4" X 18" DOUBLE ARMING BOLT	20	1	50
5986	3/4" X 20" DOUBLE ARMING BOLT	20	1	60
5988	3/4" X 22" DOUBLE ARMING BOLT	10	1	32
5990	3/4" X 24" DOUBLE ARMING BOLT	10	1	32
5992	3/4" X 26" DOUBLE ARMING BOLT	10	1	38
5994	3/4" X 28" DOUBLE ARMING BOLT	10	1	37
5996	3/4" X 30" DOUBLE ARMING BOLT	10	1	38
5997	3/4" X 32" DOUBLE ARMING BOLT	10	1	42
5998	3/4" X 34" DOUBLE ARMING BOLT	10	1	43
5999	3/4" X 36" DOUBLE ARMING BOLT	10	1	45
6700	3/4" X 38" DOUBLE ARMING BOLT	5	1	25
6702	3/4" X 40" DOUBLE ARMING BOLT	5	1	25
6104	3/4" X 42" DOUBLE ARMING BOLT	5	1	26
6108	3/4" X 46" DOUBLE ARMING BOLT	5	1	30
9997967	3/4" X 60" DOUBLE ARMING BOLT	5	1	35



Allied Bolt Products LLC

7/8" DOUBLE ARMING BOLT

PART#	DESCRIPTION	PKG QTY	CTN QTY	CTN WT.
6710	7/8" X 12" DOUBLE ARMING BOLT	15	1	42
6711	7/8" X 14" DOUBLE ARMING BOLT	15	1	46
6712	7/8" X 16" DOUBLE ARMING BOLT	15	1	51
6713	7/8" X 18" DOUBLE ARMING BOLT	10	1	37
6714	7/8" X 20" DOUBLE ARMING BOLT	8	1	30
6715	7/8" x 22" DOUBLE ARMING BOLT	8	1	32
6716	7/8" x 24" DOUBLE ARMING BOLT	7	1	36
6717	7/8" X 26" DOUBLE ARMING BOLT	7	1	40
6718	7/8" X 28" DOUBLE ARMING BOLT	8	1	42
6719	7/8" x 30" DOUBLE ARMING BOLT	8	1	44
6720	7/8" x 32" DOUBLE ARMING BOLT	8	1	46
6721	7/8" x 34" DOUBLE ARMING BOLT	8	1	48
6722	7/8" x 36" DOUBLE ARMING BOLT	8	1	50
6723	7/8" X 38" DOUBLE ARMING BOLT	5	1	34
6724	7/8" X 40" DOUBLE ARMING BOLT	5	1	35
6725	7/8" X 42" DOUBLE ARMING BOLT	5	1	35
6726	7/8" X 44" DOUBLE ARMING BOLT	5	1	36
6727	7/8" X 46" DOUBLE ARMING BOLT	5	1	36
6728	7/8" X 48" DOUBLE ARMING BOLT	5	1	39
6736	7/8" x 50" DOUBLE ARMING BOLT	5	1	40



Poleline Hardware Catalog

September 23, 2024

7/8" DOUBLE ARMING BOLT WITH 2 NUTS



Allied Bolt Products LLC

PART#	DESCRIPTION	PKG QTY	CTN QTY	CTN WT.
6719-2	7/8" x 30" DOUBLE ARMING BOLT WITH 2 NUTS	8	1	44

1" DOUBLE ARMING BOLT



Allied Bolt Products LLC

PART#	DESCRIPTION	PKG QTY	CTN QTY	CTN WT.
6750	1" x 12" DOUBLE ARMING BOLT	12	1	38
6751	1" x 14" DOUBLE ARMING BOLT	12	1	40
6752	1" x 16" DOUBLE ARMING BOLT	10	1	36
6753	1" x 18" DOUBLE ARMING BOLT	7	1	31
6754	1" x 20" DOUBLE ARMING BOLT	7	1	35
6755	1" x 22" DOUBLE ARMING BOLT	10	1	59
6756	1" x 24" DOUBLE ARMING BOLT	7	1	40
6757	1" x 26" DOUBLE ARMING BOLT	6	1	40
6758	1" x 28" DOUBLE ARMING BOLT	6	1	44
6759	1" x 30" DOUBLE ARMING BOLT	7	1	52
6760	1" x 32" DOUBLE ARMING BOLT	7	1	54
6762	1" x 36" DOUBLE ARMING BOLT	7	1	54

B CABLE SUSPENSION BOLT



Allied Bolt Products LLC

5/8" B CABLE SUSPENSION BOLT

PART#	DESCRIPTION	PKG QTY	CTN QTY	CTN WT.
8258	5/8" X 8" B CABLE SUSPENSION BOLT	50	1	58
8260	5/8" X 10" B CABLE SUSPENSION BOLT	40	1	46
8261	5/8" X 12" B CABLE SUSPENSION BOLT	40	1	52
8262	5/8" X 14" B CABLE SUSPENSION BOLT	35	1	52
8263	5/8" X 16" B CABLE SUSPENSION BOLT	30	1	48
8264	5/8" X 18" B CABLE SUSPENSION BOLT	30	1	54
8271	5/8" X 20" B CABLE SUSPENSION BOLT	10	1	19
8272	5/8" X 22" B CABLE SUSPENSION BOLT	20	1	42
8273	5/8" X 24" B CABLE SUSPENSION BOLT	20	1	44
8274	5/8" X 26" B CABLE SUSPENSION BOLT	20	1	48
8275	5/8" X 28" B CABLE SUSPENSION BOLT	20	1	50
8276	5/8" X 30" B CABLE SUSPENSION BOLT	15	1	42

3/4" B CABLE SUSPENSION BOLT



Allied Bolt Products LLC

PART#	DESCRIPTION	PKG QTY	CTN QTY	CTN WT.
8320	3/4" X 10" B CABLE SUSPENSION BOLT	30	1	32
8321	3/4" X 12" B CABLE SUSPENSION BOLT	20	1	38
8322	3/4" X 14" B CABLE SUSPENSION BOLT	20	1	42
8323	3/4" X 16" B CABLE SUSPENSION BOLT	20	1	46
8324	3/4" X 18" B CABLE SUSPENSION BOLT	20	1	52
8325	3/4" X 20" B CABLE SUSPENSION BOLT	20	1	50
8326	3/4" X 22" B CABLE SUSPENSION BOLT	10	1	28
8327	3/4" X 24" B CABLE SUSPENSION BOLT	10	1	30
8328	3/4" X 26" B CABLE SUSPENSION BOLT	10	1	32
8329	3/4" X 28" B CABLE SUSPENSION BOLT	10	1	36
8332	3/4" X 30" B CABLE SUSPENSION BOLT	10	1	40



SINGLE AND DOUBLE UPSET SPOOL BOLTS

SINGLE UPSET SPOOL BOLT HDG

PART#	DESCRIPTION	PKG QTY	CTN QTY	CTN WT.
1712	5/8" X 9" SINGLE UPSET SPOOL BOLT HDG	20	1	30
1713	5/8" X 10" SINGLE UPSET SPOOL BOLT HDG	20	1	32
1714	5/8" X 12" SINGLE UPSET SPOOL BOLT HDG	20	1	36
1715	5/8" X 14" SINGLE UPSET SPOOL BOLT HDG	10	1	24



DOUBLE UPSET SPOOL BOLT HDG

PART#	DESCRIPTION	PKG QTY	CTN QTY	CTN WT.
1716	5/8" X 9" DOUBLE UPSET SPOOL BOLT HDG	20	1	34
1717	5/8" X 10" DOUBLE UPSET SPOOL BOLT HDG	20	1	36
1718	5/8" X 12" DOUBLE UPSET SPOOL BOLT HDG	10	1	19



A193-B7 DOUBLE ARMING BOLT W/ A194-2H HEAVY HEX NUTS

3/4" ASTM A193-B7 DOUBLE ARMING BOLT w/ A194-2H HEAVY HEX NUTS

PART#	DESCRIPTION	PKG QTY	CTN QTY	CTN WT.
33418	3/4" x 18" ASTM A193-B7 DOUBLE ARMING BOLT w/ A194-2H HEAVY HEX NUTS	20	1	38
33432	3/4" x 32" ASTM A193-B7 DOUBLE ARMING BOLT w/ A194-2H HEAVY HEX NUTS	5	1	21
33440	3/4" x 40" ASTM A193-B7 DOUBLE ARMING BOLT w/ A194-2H HEAVY HEX NUTS	5	1	25



7/8" ASTM A193-B7 DOUBLE ARMING BOLT w/ A194-2H HEAVY HEX NUTS

PART#	DESCRIPTION	PKG QTY	CTN QTY	CTN WT.
37836	7/8" x 36" ASTM A193-B7 DOUBLE ARMING BOLT w/A194-2H HEAVY HEX NUTS	5	1	19



1" ASTM A193-B7 DOUBLE ARMING BOLT w/ A194-2H HEAVY HEX NUTS

PART#	DESCRIPTION	PKG QTY	CTN QTY	CTN WT.
31034	1" x 34" ASTM A193-B7 DOUBLE ARMING BOLT w/ A194-2H HEAVY HEX NUTS	5	1	40
31036	1" x 36" ASTM A193-B7 DOUBLE ARMING BOLT w/ A194-2H HEAVY HEX NUTS	5	1	43
311442	1-1/4" x 42" ASTM A193-B7 DOUBLE ARMING BOLT w/A194-2H HEAVY HEX NUTS	4	1	64



1" ASTM A193-B7 DOUBLE ARMING BOLT w/TWO A194-2H HEAVY HEX NUTS

PART#	DESCRIPTION	PKG QTY	CTN QTY	CTN WT.
31028X2	1" x 28" ASTM A193-B7 DOUBLE ARMING BOLT w/ A194-2H HEAVY HEX NUTS	6	1	44

STRAIGHT AND ANGLED GUY BOLTS

5/8" STRAIGHT GUY BOLT



Allied Bolt Products LLC

PART#	DESCRIPTION	PKG QTY	CTN QTY	CTN WT.
5804	5/8" X 8" STRAIGHT GUY BOLT	25	1	31
5805	5/8" X 10" STRAIGHT GUY BOLT	20	1	28
5806	5/8" X 12" STRAIGHT GUY BOLT	10	1	15
5807	5/8" X 14" STRAIGHT GUY BOLT	10	1	17
5808	5/8" X 16" STRAIGHT GUY BOLT	10	1	20
5809	5/8" X 18" STRAIGHT GUY BOLT	20	1	39
5852	5/8" X 20" STRAIGHT GUY BOLT	10	1	21

3/4" STRAIGHT GUY BOLT



Allied Bolt Products LLC

PART#	DESCRIPTION	PKG QTY	CTN QTY	CTN WT.
5857	3/4" X 10" STRAIGHT GUY BOLT	10	1	22
5814	3/4" X 12" STRAIGHT GUY BOLT	10	1	33
5813	3/4" X 14" STRAIGHT GUY BOLT	10	1	39
5812	3/4" X 16" STRAIGHT GUY BOLT	10	1	45
5858	3/4" X 18" STRAIGHT GUY BOLT	10	1	51
5859	3/4" X 20" STRAIGHT GUY BOLT	5	1	19

5/8" ANGLED GUY BOLT



Allied Bolt Products LLC

PART#	DESCRIPTION	PKG QTY	CTN QTY	CTN WT.
5831	5/8" X 8" ANGLED GUY BOLT	20	1	26
5832	5/8" X 10" ANGLED GUY BOLT	20	1	30
5834	5/8" X 12" ANGLED GUY BOLT	10	1	16
5836	5/8" X 14" ANGLED GUY BOLT	10	1	17
5838	5/8" X 16" ANGLED GUY BOLT	10	1	24
5839	5/8" X 18" ANGLED GUY BOLT	10	1	21
5860	5/8" X 20" ANGLED GUY BOLT	5	1	21
5853	5/8" X 22" ANGLED GUY BOLT	5	1	25

3/4" ANGLED GUY BOLT



Allied Bolt Products LLC

PART#	DESCRIPTION	PKG QTY	CTN QTY	CTN WT.
5824	3/4" X 10" ANGLED GUY BOLT	10	1	22
5825	3/4" X 12" ANGLED GUY BOLT	10	1	23
5826	3/4" X 14" ANGLED GUY BOLT	10	1	39
5815	3/4" X 16" ANGLED GUY BOLT	10	1	28
5816	3/4" X 18" ANGLED GUY BOLT	10	1	30
5817	3/4" X 20" ANGLED GUY BOLT	5	1	20
5818	3/4" X 22" ANGLED GUY BOLT	5	1	17

1" ANGLED GUY BOLT



Allied Bolt Products LLC

PART#	DESCRIPTION	PKG QTY	CTN QTY	CTN WT.
5840	1" X 12" ANGLED GUY BOLT	5	1	24
5841	1" X 14" ANGLED GUY BOLT	5	1	26
5842	1" X 16" ANGLED GUY BOLT	5	1	25
5843	1" X 18" ANGLED GUY BOLT	5	1	30



Allied Bolt Products LLC

OVAL EYEBOLT
5/8" OVAL EYEBOLT

PART#	DESCRIPTION	PKG QTY	CTN QTY	CTN WT.
4101	5/8" X 6" OVAL EYEBOLT	40	1	41
4102	5/8" X 8" OVAL EYEBOLT	50	1	64
4103	5/8" X 10" OVAL EYEBOLT	35	1	52
4104	5/8" X 12" OVAL EYEBOLT	35	1	58
4105	5/8" X 14" OVAL EYEBOLT	20	1	36
4106	5/8" X 16" OVAL EYEBOLT	35	1	51
4107	5/8" X 18" OVAL EYEBOLT	25	1	47
4108	5/8" X 20" OVAL EYEBOLT	25	1	55
4109	5/8" X 22" OVAL EYEBOLT	25	1	60



Allied Bolt Products LLC

3/4" OVAL EYEBOLT

PART#	DESCRIPTION	PKG QTY	CTN QTY	CTN WT.
4112	3/4" X 8" OVAL EYEBOLT	25	1	50
4113	3/4" X 10" OVAL EYEBOLT	25	1	50
4114	3/4" X 12" OVAL EYEBOLT	25	1	52
4115	3/4" X 14" OVAL EYEBOLT	25	1	60
4116	3/4" X 16" OVAL EYEBOLT	25	1	65
4117	3/4" X 18" OVAL EYEBOLT	25	1	70
4119	3/4" X 20" OVAL EYEBOLT	10	1	36
4120	3/4" X 22" OVAL EYEBOLT	10	1	39



Allied Bolt Products LLC

OVAL EYEBOLT STAINLESS STEEL
OVAL EYEBOLT STAINLESS STEEL

PART#	DESCRIPTION	PKG QTY	CTN QTY	CTN WT.
4102SS	5/8" X 8" OVAL EYEBOLT SATINLESS STEEL	50	1	64
4103SS	5/8" X 10" OVAL EYEBOLT SATINLESS STEEL	35	1	58
4104SS	5/8" X 12" OVAL EYEBOLT SATINLESS STEEL	35	1	58
4105SS	5/8" X 14" OVAL EYEBOLT SATINLESS STEEL	20	1	36



Allied Bolt Products LLC

CABLE EXTENSION BOLT
CABLE BOLT EXTENSION

PART#	DESCRIPTION	PKG QTY	CTN QTY	CTN WT.
2070	S CABLE BOLT EXTENSION (5/8"-11)	50	1	55
2071	C CABLE BOLT EXTENSION (3/4"-10)	25	1	35
2073	5/8" X 11" CABLE EXTENSION BOLT	25	1	59



Allied Bolt Products LLC

CARRIAGE BOLT
3/16" CARRIAGE BOLT

PART#	DESCRIPTION	PKG QTY	CTN QTY	CTN WT.
279	3/16" X 1" CARRIAGE BOLT	100	32	42
278	3/16" X 1-1/4" CARRIAGE BOLT	100	32	48



1/4" CARRIAGE BOLT

PART#	DESCRIPTION	PKG QTY	CTN QTY	CTN WT.
282	1/4" X 1-1/2" CARRIAGE BOLT	100	8	27
268	1/4" X 2" CARRIAGE BOLT	100	8	28
269	1/4" X 2-1/4" CARRIAGE BOLT	100	8	31
277	1/4" X 2-1/2" CARRIAGE BOLT	100	4	17



5/16" CARRIAGE BOLT

PART#	DESCRIPTION	PKG QTY	CTN QTY	CTN WT.
7004	5/16" X 3" CARRIAGE BOLT	100	4	28



3/8" CARRIAGE BOLT

PART#	DESCRIPTION	PKG QTY	CTN QTY	CTN WT.
918	3/8" X 1-1/4" CARRIAGE BOLT	50	1	4
270	3/8" X 2-1/2" CARRIAGE BOLT	100	1	17
923	3/8" X 3" CARRIAGE BOLT	50	4	40
926	3/8" X 4" CARRIAGE BOLT	100	1	15
927	3/8" X 4-1/2" CARRIAGE BOLT	100	1	16
925	3/8" X 5" CARRIAGE BOLT	250	1	43
941	3/8" X 5-1/2" CARRIAGE BOLT	50	1	9
928	3/8" X 6" CARRIAGE BOLT	100	1	18
935	3/8" X 7" CARRIAGE BOLT	100	1	22
929	3/8" X 8" CARRIAGE BOLT	100	1	25
930	3/8" X 10" CARRIAGE BOLT	100	1	32
931	3/8" X 12" CARRIAGE BOLT	100	1	42
934	3/8" X 14" CARRIAGE BOLT	100	1	49



1/2" CARRIAGE BOLT

PART#	DESCRIPTION	PKG QTY	CTN QTY	CTN WT.
10002	1/2" X 1-1/2" CARRIAGE BOLT	500	1	65
10005	1/2" X 2-1/2" CARRIAGE BOLT	50	1	12
1499	1/2" X 4" CARRIAGE BOLT	50	1	15
890	1/2" X 4-3/4" CARRIAGE BOLT	50	1	16
1498	1/2" X 4-1/2" CARRIAGE BOLT	100	1	26
946	1/2" X 5" CARRIAGE BOLT	50	1	18
1490	1/2" X 5-1/2" CARRIAGE BOLT	50	1	17
7018	1/2" X 6" CARRIAGE BOLT	50	1	17
1493	1/2" X 7" CARRIAGE BOLT	50	1	22
1492	1/2" X 8" CARRIAGE BOLT	50	1	23
14910	1/2" X 10" CARRIAGE BOLT	50	1	29



5/8" CARRIAGE BOLT

PART#	DESCRIPTION	PKG QTY	CTN QTY	CTN WT.
9360	5/8" x 2-1/2" CARRIAGE BOLT	50	1	20
9364	5/8" x 4" CARRIAGE BOLT	50	1	24
1494	5/8" x 5" CARRIAGE BOLT	50	1	25
1495	5/8" x 5-1/2" CARRIAGE BOLT	50	1	50
936	5/8" X 6" CARRIAGE BOLT	50	1	32
952	5/8" x 8" CARRIAGE BOLT	50	1	36

3/4" CARRIAGE BOLT



Allied Bolt Products LLC

PART#	DESCRIPTION	PKG QTY	CTN QTY	CTN WT.
9365	3/4" x 4" CARRIAGE BOLT	50	1	35

B CABLE SUSPENSION SCREW



Allied Bolt Products LLC

PART#	DESCRIPTION	PKG QTY	CTN QTY	CTN WT.
845	B CABLE SUSPENSION SCREW	50	1	58

GUARD ARM HOOK BOLT ASSEMBLY

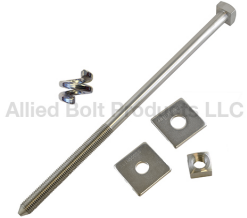


Allied Bolt Products LLC

PART#	DESCRIPTION	PKG QTY	CTN QTY	CTN WT.
8550	1/2" GUARD ARM HOOK BOLT ASSEMBLY	50	1	20

316 STAINLESS STEEL SQUARE HEAD BOLT KIT

5/8" 316 STAINLESS STEEL SQUARE HEAD BOLT KIT



Allied Bolt Products LLC

PART#	DESCRIPTION	PKG QTY	CTN QTY	CTN WT.
65810	5/8" X 10" 316 STAINLESS STEEL SQUARE HEAD BOLT KIT	20	1	24
65812	5/8" X 12" 316 STAINLESS STEEL SQUARE HEAD BOLT KIT	20	1	28
65814	5/8" X 14" 316 STAINLESS STEEL SQUARE HEAD BOLT KIT	15	1	28
65816	5/8" X 16" 316 STAINLESS STEEL SQUARE HEAD BOLT KIT	15	1	22

3/4" 316 STAINLESS STEEL SQUARE HEAD BOLT KIT

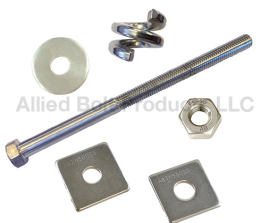


Allied Bolt Products LLC

PART#	DESCRIPTION	PKG QTY	CTN QTY	CTN WT.
63410	3/4" X 10" 316 STAINLESS STEEL SQUARE HEAD BOLT KIT	25	1	55
63412	3/4" X 12" 316 STAINLESS STEEL SQUARE HEAD BOLT KIT	50	1	84
63414	3/4" X 14" 316 STAINLESS STEEL SQUARE HEAD BOLT KIT	25	1	47
63416	3/4" X 16" 316 STAINLESS STEEL SQUARE HEAD BOLT KIT	25	1	35

316 STAINLESS STEEL HEX HEAD BOLT KIT

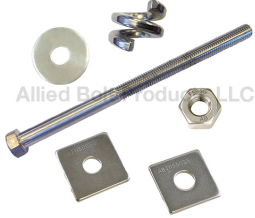
5/8" #316 STAINLESS STEEL HEX BOLT KIT



Allied Bolt Products LLC

PART#	DESCRIPTION	PKG QTY	CTN QTY	CTN WT.
22193	5/8" X 10" #316 STAINLESS STEEL HEX BOLT KIT	50	1	46
22194	5/8" X 12" #316 STAINLESS STEEL HEX BOLT KIT	50	1	60
22195	5/8" X 14" #316 STAINLESS STEEL HEX BOLT KIT	25	1	50

3/4" #316 STAINLESS STEEL HEX CAP SCREW



PART#	DESCRIPTION	PKG QTY	CTN QTY	CTN WT.
22208	3/4" X 10" #316 STAINLESS STEEL HEX BOLT KIT	50	1	70
22209	3/4" X 12" #316 STAINLESS STEEL HEX BOLT KIT	50	1	84
22210	3/4" X 14" #316 STAINLESS STEEL HEX BOLT KIT	25	1	47
222106	3/4" X 16" #316 STAINLESS STEEL HEX BOLT KIT	25	1	35

C CABLE SUSPENSION BOLT

C CABLE SUSPENSION BOLT



PART#	DESCRIPTION	PKG QTY	CTN QTY	CTN WT.
5181	5/8" X 2-1/2" C CABLE SUSPENSION BOLT	50	1	20

DOUBLE ARMING BOLT A325-1 W/4 A563-DH NUT GALVANIZED

3/4" DOUBLE ARMING BOLT A325-1 W/4 A563-DH NUT GALVANIZED



PART#	DESCRIPTION	PKG QTY	CTN QTY	CTN WT.
7958	3/4" X 24" DOUBLE ARMING BOLT A325-1 W/4 A563-DH NUT GALV	0	0	0
8500013	3/4" X 26" DOUBLE ARMING BOLT A325-1 W/4 A563-DH NUT GALV	5	1	18
8500014	3/4" X 28" DOUBLE ARMING BOLT A325-1 W/4 A563-DH NUT GALV	5	1	19
8500015	3/4" X 30" DOUBLE ARMING BOLT A325-1 W/4 A563-DH NUT GALV	5	1	20
8500016	3/4" X 32" DOUBLE ARMING BOLT A325-1 W/4 A563-DH NUT GALV	5	1	21
8500018	3/4" X 36" DOUBLE ARMING BOLT A325-1 W/4 A563-DH NUT GALV	5	1	23

7/8" DOUBLE ARMING BOLT A325-1 W/4 A563-DH NUT GALVANIZED



PART#	DESCRIPTION	PKG QTY	CTN QTY	CTN WT.
7923	7/8" X 14" DOUBLE ARMING BOLT A325-1 W/4 A563-DH NUT GALV	15	1	40
7973	7/8" X 22" DOUBLE ARMING BOLT A325-1 W/4 A563-DH NUT GALV	10	1	44
7974	7/8" X 24" DOUBLE ARMING BOLT A325-1 W/4 A563-DH NUT GALV	10	1	48
8400012	7/8" X 26" DOUBLE ARMING BOLT A325-1 W/4 A563-DH NUT GALV	7	1	35
8400013	7/8" X 28" DOUBLE ARMING BOLT A325-1 W/4 A563-DH NUT GALV	8	1	40
8400014	7/8" X 30" DOUBLE ARMING BOLT A325-1 W/4 A563-DH NUT GALV	8	1	45
8400015	7/8" X 32" DOUBLE ARMING BOLT A325-1 W/4 A563-DH NUT GALV	8	1	47
7979	7/8" X 34" DOUBLE ARMING BOLT A325-1 W/4 A563-DH NUT GALV	5	1	18
7980	7/8" X 36" DOUBLE ARMING BOLT A325-1 W/4 A563-DH NUT GALV	5	1	19

1" DOUBLE ARMING BOLT A325-1 W/4 A563-DH NUT GALVANIZED



PART#	DESCRIPTION	PKG QTY	CTN QTY	CTN WT.
7983	1" X 14" DOUBLE ARMING BOLT A325-1 W/4 A563-DH NUT GALV	12	1	34
7984	1" X 16" DOUBLE ARMING BOLT A325-1 W/4 A563-DH NUT GALV	10	1	40
7985	1" X 18" DOUBLE ARMING BOLT A325-1 W/4 A563-DH NUT GALV	7	1	22
7986	1" X 20" DOUBLE ARMING BOLT A325-1 W/4 A563-DH NUT GALV	7	1	34
7987	1" X 22" DOUBLE ARMING BOLT A325-1 W/4 A563-DH NUT GALV	7	1	37
7988	1" X 24" DOUBLE ARMING BOLT A325-1 W/4 A563-DH NUT GALV	7	1	30
7989	1" X 26" DOUBLE ARMING BOLT A325-1 W/4 A563-DH NUT GALV	6	1	33
7991	1" X 30" DOUBLE ARMING BOLT A325-1 W/4 A563-DH NUT GALV	7	1	52
7993	1" X 34" DOUBLE ARMING BOLT A325-1 W/4 A563-DH NUT GALV	5	1	40
8600010	1" X 36" DOUBLE ARMING BOLT A325-1 W/4 A563-DH NUT GALV	5	1	43
8600013	1" X 48" DOUBLE ARMING BOLT A325-1 W/4 A563-DH NUT GALV	5	1	54

Support Braces



Poleline Hardware Catalog

September 23, 2024

V CROSSARM BRACE

V CROSSARM BRACE



PART#	DESCRIPTION	PKG QTY	CTN QTY	CTN WT.
8400	37" V CROSSARM BRACE 12" DROP 1-1/2" X 1-1/2" X 3/16" STEEL	1	1	7
8405	42" V CROSSARM BRACE 12" DROP 1-1/2" X 1-1/2" X 3/16" STEEL	1	1	8
8410	48" V CROSSARM BRACE 18" DROP 1-1/2" X 1-1/2" X 3/16" STEEL	1	1	10
8415	60" V CROSSARM BRACE 18" DROP 1-1/2" X 1-1/2" X 3/16" STEEL	1	1	12
8420	60" V CROSSARM BRACE 18" DROP 1-3/4" X 1-3/4" X 3/16" STEEL	1	1	14
8430	66" V CROSSARM BRACE 20" DROP 1-3/4" X 1-3/4" X 3/16" STEEL	1	1	14
8435	72" V CROSSARM BRACE 22" DROP 1-3/4" X 1-3/4" X 3/16" STEEL	1	1	14
8440	88" V CROSSARM BRACE 27" DROP 1-3/4" X 1-3/4" X 3/16" STEEL	1	1	16

ALLEY ARM BACK BRACE

ALLEY ARM BACK BRACE



PART#	DESCRIPTION	PKG QTY	CTN QTY	CTN WT.
8472	50" ALLEY ARM BACK BRACE	1	1	8

ALLEY ARM BRACE

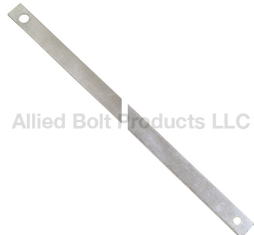
ALLEY ARM BRACE/ ANGLE STEEL



PART#	DESCRIPTION	PKG QTY	CTN QTY	CTN WT.
900031	5' ALLEY ARM BRACE 1-3/4" X 1-3/4" X 3/16" ANGLE STEEL	1	1	13
900032	7' ALLEY ARM BRACE 1-3/4" X 1-3/4" X 3/16" ANGLE STEEL	1	1	18
900033	10' ALLEY ARM BRACE 2" X 2" X 3/16" ANGLE STEEL	1	1	36

CROSSARM BRACE

CROSSARM BRACE



PART#	DESCRIPTION	PKG QTY	CTN QTY	CTN WT.
5096	20" CROSSARM BRACE	20	1	46
5092	26" CROSSARM BRACE	20	1	38
5091	28" CROSSARM BRACE	20	1	49
5070	30" CROSSARM BRACE	20	1	43
5093	32" CROSSARM BRACE	20	1	46

CROSSARM FRAMING BRACE

CROSSARM BRACE



PART#	DESCRIPTION	PKG QTY	CTN QTY	CTN WT.
8470	18-1/2" CROSSARM FRAMING BRACE	10	1	24



GUARD ARM BRACE

GUARD ARM BRACE

PART#	DESCRIPTION	PKG QTY	CTN QTY	CTN WT.
5057	GUARD ARM BRACE	25	1	39



B POLE BRACE

PART#	DESCRIPTION	PKG QTY	CTN QTY	CTN WT.
2090	B POLE BRACE	2	1	16



METER BOX HANGER

Support Braces

PART#	DESCRIPTION	PKG QTY	CTN QTY	CTN WT.
2956	METER BOX HANGER	8	1	13

Wall and Frame Brackets



B Wall Bracket Assembly

B Wall Bracket Assembly

PART#	DESCRIPTION	PKG QTY	CTN QTY	CTN WT.
851	B WALL BRACKET	5	1	16



C WALL BRACKET ASSEMBLY

C WALL BRACKET ASSEMBLY

PART#	DESCRIPTION	PKG QTY	CTN QTY	CTN WT.
1440	C WALL BRACKET ASSEMBLY	5	1	35



D Wall Bracket

D Wall Bracket

PART#	DESCRIPTION	PKG QTY	CTN QTY	CTN WT.
842	D WALL BRACKET	10	1	8



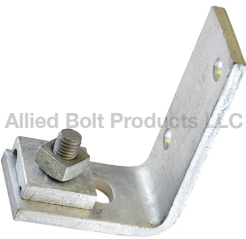
E Wall Bracket

PART#	DESCRIPTION	PKG QTY	CTN QTY	CTN WT.
863	E WALL BRACKET	30	1	46



L & S CORNER BRACKET
CORNER BRACKET

PART#	DESCRIPTION	PKG QTY	CTN QTY	CTN WT.
883	L CORNER BRACKET	50	1	57
884	S CORNER BRACKET	50	1	36



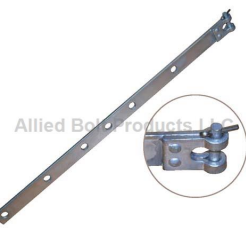
L & S WALL BRACKET
WALL BRACKET

PART#	DESCRIPTION	PKG QTY	CTN QTY	CTN WT.
881	S WALL BRACKET	25	1	41
882	L WALL BRACKET	25	1	75



B BEAM CLAMP
BEAM CLAMP

PART#	DESCRIPTION	PKG QTY	CTN QTY	CTN WT.
444	B BEAM CLAMP	25	1	19



B CORNER WALL STRAP
B CORNER WALL STRAP

PART#	DESCRIPTION	PKG QTY	CTN QTY	CTN WT.
1407	B CORNER WALL STRAP	25	1	36



WALL STRAP
WALL STRAP

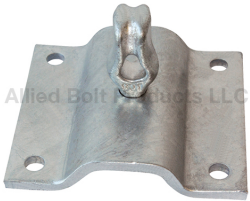
PART#	DESCRIPTION	PKG QTY	CTN QTY	CTN WT.
5065	1/2" WALL STRAP	10	1	27
5066	5/8" WALL STRAP	5	1	22
5068	SHORT 5/8" WALL STRAP	10	1	27

U WALL STRAP



PART#	DESCRIPTION	PKG QTY	CTN QTY	CTN WT.
5067	"U" WALL STRAP	5	10	50

WALL PLATE STRAP ASSEMBLY

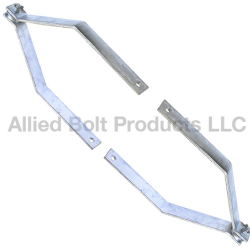


PART#	DESCRIPTION	PKG QTY	CTN QTY	CTN WT.
901	WALL PLATE STRAP ASSEMBLY	10	1	61

Extension Brackets

DEADEND BRACKET

DEADEND BRACKET



PART#	DESCRIPTION	PKG QTY	CTN QTY	CTN WT.
7395	DEADEND BRACKET ASSEMBLY WITH 4 BRACKETS	1	1	24

CABLE EXTENSION BRACKET

CABLE EXTENSION BRACKET



PART#	DESCRIPTION	PKG QTY	CTN QTY	CTN WT.
1188	17-1/2" TO 26" CABLE EXTENSION BRACKET	1	1	30
1189	26-1/2" TO 44-1/2" CABLE EXTENSION BRACKET	1	1	60

EXTENSION BRACKET

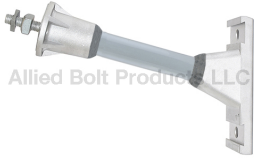
CABLE EXTENSION ARM



PART#	DESCRIPTION	PKG QTY	CTN QTY	CTN WT.
7584	15" EXTENSION BRACKET	2	1	14
7585	18" EXTENSION BRACKET	2	1	17
7586	24" EXTENSION BRACKET	2	1	20

FIBERGLASS COMMUNICATION STANDOFF BRACKET

FIBERGLASS COMMUNICATION STANDOFF BRACKET



Allied Bolt Products, LLC

PART#	DESCRIPTION	PKG QTY	CTN QTY	CTN WT.
4869	12" FIBERGLASS COMMUNICATION STANDOFF BRACKET	2	1	10
4870	15" FIBERGLASS COMMUNICATION STANDOFF BRACKET	2	1	11
4871	18" FIBERGLASS COMMUNICATION STANDOFF BRACKET	2	1	12
4872	21" FIBERGLASS COMMUNICATION STANDOFF BRACKET	2	1	13
4874	24" FIBERGLASS COMMUNICATION STANDOFF BRACKET	2	1	14
4875	30" FIBERGLASS COMMUNICATION STANDOFF BRACKET	2	1	16
4876	36" FIBERGLASS COMMUNICATION STANDOFF BRACKET	2	1	17

Wire Formed Hardware

GUY WIRE DEADEND B COATED

GUY WIRE DEADEND B COATED



Allied Bolt Products, LLC

PART#	DESCRIPTION	PKG QTY	CTN QTY	CTN WT.
AB110020	3/16" GUY DEADEND GRIP STEEL CLASS B COATED - RED	100	1	30
AB110040	1/4" GUY DEADEND GRIP STEEL CLASS B COATED - YELLOW	50	1	36
AB110060	5/16" GUY DEADEND GRIP STEEL CLASS B COATED - BLACK	50	1	40
AB110070	3/8" GUY DEADEND GRIP STEEL CLASS B COATED - ORANGE	40	1	36
AB110080	7/16" GUY DEADEND GRIP STEEL CLASS B COATED - GREEN	20	1	31
AB110090	1/2" GUY DEADEND GRIP STEEL CLASS B COATED - BLUE	10	1	29

GUY WIRE DEADEND GALFAN™ COATED

Guy Wire Deadend Bezinal™ Coated

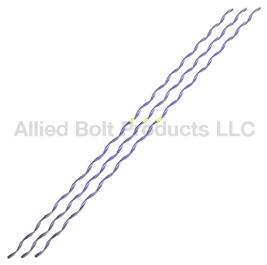


Allied Bolt Products, LLC

PART#	DESCRIPTION	PKG QTY	CTN QTY	CTN WT.
AB910040	1/4" GUY WIRE DEADEND GALFAN™ COATED - YELLOW	50	1	36
AB910060	5/16" GUY WIRE DEADEND GALFAN™ COATED - BLACK	50	1	40
AB910070	3/8" GUY WIRE DEADEND GALFAN™ COATED - ORANGE	20	1	23

STRAND SPLICE B COATED

STRAND SPLICE B COATED

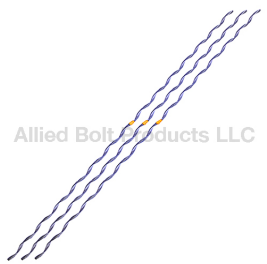


Allied Bolt Products, LLC

PART#	DESCRIPTION	PKG QTY	CTN QTY	CTN WT.
ABS1104	1/4" STRAND SPLICE 35" B COATED	50	1	27
ABS1106	5/16" STRAND SPLICE 42" B COATED	50	1	40
ABS1107	3/8" STRAND SPLICE 50" B COATED	25	1	32

STRAND SPLICE GALFAN™ COATED

STRAND SPLICE GALFAN™ COATED



Allied Bolt Products, LLC

PART#	DESCRIPTION	PKG QTY	CTN QTY	CTN WT.
ABS9104	1/4" STRAND SPLICE 35" GALFAN™ COATED	40	1	33
ABS9106	5/16" STRAND SPLICE 42" GALFAN™ COATED	20	1	17
ABS9107	3/8" STRAND SPLICE 50" GALFAN™ COATED	25	1	32



Poleline Hardware Catalog

September 23, 2024



CABLE PULLING GRIP

CABLE PULLING GRIP

PART#	DESCRIPTION	PKG QTY	CTN QTY	CTN WT.
2803	0.64-0.88 CABLE PULLING GRIP	20	1	12

Allied Bolt Products LLC



SPLIT LACE UP PULLING GRIP

PART#	DESCRIPTION	PKG QTY	CTN QTY	CTN WT.
2801	1.0-1.5 SPLIT LACE UP PULLING GRIP	20	1	12
2800	1.5-2.0 SPLIT LACE UP PULLING GRIP	20	1	14

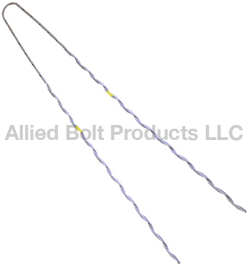
Allied Bolt Products LLC



SUPPORT GRIP

PART#	DESCRIPTION	PKG QTY	CTN QTY	CTN WT.
2800-11	0.63-0.75 SUPPORT GRIP	20	1	5
2800-13	0.75-1.00 SUPPORT GRIP	20	1	7
2800-15	1.00-1.25 SUPPORT GRIP	20	1	9

Allied Bolt Products LLC



FALSE DEADEND

FALSE DEAD-ENDS

PART#	DESCRIPTION	PKG QTY	CTN QTY	CTN WT.
ABFDE9104	1/4" FALSE DEADEND 36" YELLOW	50	1	33
ABFDE9106	5/16" FALSE DEADEND 39" BLACK	50	1	46
ABFDE9107	3/8" FALSE DEADEND 42" BROWN	30	1	38

Allied Bolt Products LLC

ADSS Fiber Cable Hardware



ADSS POLE CLAMP

ADSS POLE CLAMP

PART#	DESCRIPTION	PKG QTY	CTN QTY	CTN WT.
958	POLE CLAMP FOR 8-12MM ADSS CABLE	25	1	8
957	POLE CLAMP FOR 12-14MM ADSS CABLE	25	1	8
956	POLE CLAMP FOR 16-18MM ADSS CABLE	25	1	8
953	POLE CLAMP FOR 18-20MM ADSS CABLE	25	1	28

Allied Bolt Products LLC



ALUMINUM TRUNNION SUPPORT FOR ADSS FIBER CABLE

ALUMINUM TRUNNION SUPPORT FOR ADSS FIBER CABLE

PART#	DESCRIPTION	PKG QTY	CTN QTY	CTN WT.
9700-1	TRUNNION CLAMP FOR ADSS FIBER .356"-.459" BLACK	10	1	24
9700-3	TRUNNION CLAMP FOR ADSS FIBER .459"-.555" ORANGE	10	1	24
9700-5	TRUNNION CLAMP FOR ADSS FIBER .551"-.649" BLUE	10	1	24
9700-7	TRUNNION CLAMP FOR ADSS FIBER .649"-.748" WHITE	10	1	24

Allied Bolt Products LLC

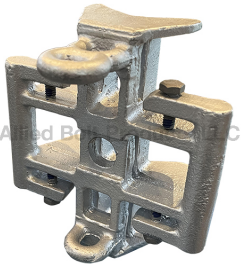


Allied Bolt Products LLC

J SUSPENSION BRACKET FOR ADSS FIBER OPTIC CABLE

J SUSPENSION BRACKET FOR ADSS FIBER OPTIC CABLE

PART#	DESCRIPTION	PKG QTY	CTN QTY	CTN WT.
9701-2	10-15MM J BRACKET FOR ADSS FIBER OPTIC CABLE	50	1	20
9701-3	15-20MM J BRACKET FOR ADSS FIBER OPTIC CABLE	50	1	20



Allied Bolt Products LLC

POLE MOUNTED SQUID FIXTURE

Pole Mounted Squid Fixture

PART#	DESCRIPTION	PKG QTY	CTN QTY	CTN WT.
944	POLE MOUNTED SQUID FIXTURE	5	1	15



Allied Bolt Products LLC

ADSS LITE DEAD-END FOR FIBER CABLE

ADSS LITE DEAD-END FOR FIBER CABLE

PART#	DESCRIPTION	PKG QTY	CTN QTY	CTN WT.
AB85001	ADSS LITE DEAD-END FOR FIBER CABLE - RED 0.3740.414	40	1	23
AB85002	ADSS LITE DEAD-END FOR FIBER CABLE - ORANGE 0.415-- 0.459	25	1	20
AB85003	ADSS LITE DEAD-END FOR FIBER CABLE - GREEN 0.4600.505	25	1	33
AB85004	ADSS LITE DEAD-END FOR FIBER CABLE - PINK 0.5060.557	25	1	37
AB85005	ADSS LITE DEAD-END FOR FIBER CABLE - YELLOW 0.5580.615	15	1	42
AB85006	ADSS LITE DEAD-END FOR FIBER CABLE - BLUE 0.6160.680	15	1	45
AB85007	ADSS LITE DEAD-END FOR FIBER CABLE - BROWN 0.6810.750	15	1	49

Automatic Connectors



Allied Bolt Products LLC

COPPER CONDUCTOR SPLICE

COPPER CONDUCTOR SPLICE

PART#	DESCRIPTION	PKG QTY	CTN QTY	CTN WT.
CUS1	8 - 6 SOL, 8 STR, 3 No. 12 C.W., COPPER CONDUCTOR SPLICE	100	1	13
CUS2	#4 SOL, 6 STR, 8A C.W., COPPER CONDUCTOR SPLICE	100	1	15
CUS3	#3 SOL, 6A C.W., COPPER CONDUCTOR SPLICE	50	1	18
CUS4	#2 SOL, 4-3 STR, 5A C.W., COPPER CONDUCTOR SPLICE	50	1	23
CUS5	#1 SOL, 2 STR, 4A C.W., COPPER CONDUCTOR SPLICE	50	1	25
CUS6	1/0 SOL, 1 STR, 3A C.W., COPPER CONDUCTOR SPLICE	50	1	30
CUS7	2/0 SOL, 1/0 STR, 2A C.W., COPPER CONDUCTOR SPLICE	50	1	34
CUS8	3/0 SOL, 2/0 STR, COPPER CONDUCTOR SPLICE	50	1	40
CUS9	4/0 SOL, 3/0 STR, COPPER CONDUCTOR SPLICE	25	1	23
CUS10	4/0 STR COPPER CONDUCTOR SPLICE	25	1	34



Allied Bolt Products LLC

STRAND DEAD-END

EHS STRAND DEADEND

PART#	DESCRIPTION	PKG QTY	CTN QTY	CTN WT.
AB520000	1/4" EHS STRAND DEAD-END YELLOW	25	1	14
AB520100	5/16" EHS STRAND DEAD-END BLACK	25	1	22
AB520200	3/8" EHS STRAND DEAD-END ORANGE	25	1	36
AB520300	7/16" EHS STRAND DEAD-END GREEN	25	1	50
AB520400	1/2" EHS STRAND DEADEND BLUE	25	1	54



ALL GRADE STRAND DEADEND

PART#	DESCRIPTION	PKG QTY	CTN QTY	CTN WT.
AB509900	3/16 ALL GRADE STRAND DEADEND ORANGE	50	1	22
AB510000	1/4" ALL GRADE STRAND DEADEND YELLOW	50	1	19
AB510100	5/16" ALL GRADE STRAND DEADEND BLACK	50	1	34
AB510200	3/8" ALL GRADE STRAND DEADEND ORANGE	50	1	53



LONG BAIL EHS STRAND DEADEND

PART#	DESCRIPTION	PKG QTY	CTN QTY	CTN WT.
AB520000L	1/4" LONG BAIL EHS STRAND DEADEND YELLOW (OVERALL LENGTH 13.625")	25	1	17
AB520100L	5/16" LONG BAIL EHS STRAND DEADEND BLACK (OVERALL LENGTH 15.67")	25	1	24
AB520200L	3/8" LONG BAIL EHS STRAND DEADEND ORANGE (OVERALL LENGTH 17.36")	25	1	40
AB520300L	7/16" LONG BAIL EHS STRAND DEADEND GREEN (OVERALL LENGTH 18.47")	25	1	50



LONG BAIL ALL GRADE STRAND DEADEND

PART#	DESCRIPTION	PKG QTY	CTN QTY	CTN WT.
AB510000L	1/4" LONG BAIL ALL GRADE STRAND DEADEND YELLOW (OVERALL LENGTH 12.75")	50	1	23
AB510100L	5/16" LONG BAIL ALL GRADE STRAND DEADEND BLACK (OVERALL LENGTH 13.42")	50	1	40
AB510200L	3/8" LONG BAIL ALL GRADE STRAND DEADEND ORANGE (OVERALL LENGTH 17.17")	50	1	56



EXTRA LONG BAIL ALL GRADE STRAND DEADEND

PART#	DESCRIPTION	PKG QTY	CTN QTY	CTN WT.
AB510100LL	5/16" EXTRA LONG BAIL ALL GRADE STRAND DEADEND BLACK (OVERALL LENGTH 24")	50	1	50
AB510200LL	3/8" EXTRA LONG BAIL ALL GRADE STRAND DEADEND ORANGE (OVERALL LENGTH 24")	50	1	56



STRAND SPLICE
EHS STRAND SPLICE

PART#	DESCRIPTION	PKG QTY	CTN QTY	CTN WT.
AB504000	1/4" EHS STRAND SPLICE	50	1	27
AB504100	5/16" EHS STRAND SPLICE	50	1	36
AB504200	3/8" EHS STRAND SPLICE	25	1	30
AB504300	7/16" EHS STRAND SPLICE	25	1	38
AB504400	1/2" EHS STRAND SPLICE	25	1	42



ALL GRADE STRAND SPLICE

PART#	DESCRIPTION	PKG QTY	CTN QTY	CTN WT.
AB500000	1/4" STRAND SPLICE ALL GRADE	50	1	16
AB500100	5/16" STRAND SPLICE ALL GRADE	50	1	30
AB500200	3/8" STRAND SPLICE ALL GRADE	50	1	22



Allied Bolt Products LLC

STRAND REDUCING SPLICE

STRAND REDUCING SPLICE

PART#	DESCRIPTION	PKG QTY	CTN QTY	CTN WT.
AB508600	1/4" TO 3/16" STRAND REDUCING SPLICE	50	1	50
AB508700	5/16" TO 1/4" STRAND REDUCING SPLICE	50	1	50
AB502200	3/8" TO 5/16" STRAND REDUCING SPLICE	50	1	50
AB502300	7/16" TO 3/8" STRAND REDUCING SPLICE	50	1	50



Allied Bolt Products LLC

ALUMINUM CONDUCTOR SPLICE

ALUMINUM CONDUCTOR SPLICE

PART#	DESCRIPTION	PKG QTY	CTN QTY	CTN WT.
AB40200	#4 ALUMINUM CONDUCTOR SPLICE ORANGE	50	1	6
AB40420	#4 TO #2 ALUMINUM CONDUCTOR SPLICE RED/ORANGE	20	1	7
AB40100	#6 TO #4 ALUMINUM CONDUCTOR SPLICE BLUE	50	1	14
AB40600	1/0 ALUMINUM CONDUCTOR SPLICE YELLOW	20	1	9
AB407600	1/0 TO 2/0 ALUMINUM CONDUCTOR SPLICE GRAY-YELLOW	25	1	19
AB40700	2/0 ALUMINUM CONDUCTOR SPLICE GRAY	20	1	21
AB40800	3/0 ALUMINUM CONDUCTOR SPLICE BLACK	25	1	32
AB409800	3/0 , 4/0 ALUMINUM CONDUCTOR SPLICE PINK-BLACK	20	1	40
AB40900	4/0 ALUMINUM CONDUCTOR SPLICE PINK	20	1	40
AB41000	266.8 (18/1) ALUMINUM CONDUCTOR SPLICE BROWN	20	1	28
AB4111000	266.8(18/1) TO 336.4(18/1) ALUMINUM CONDUCTOR SPLICE GREEN-BROWN	20	1	40
AB41100	336.4 (18/1) ALUMINUM CONDUCTOR SPLICE GREEN	20	1	36
AB41200	397.5 (18/1) ALUMINUM CONDUCTOR SPLICE BLUE	10	1	32
AB41300	477 (18/1) ALUMINUM CONDUCTOR SPLICE WHITE	20	1	56



Allied Bolt Products LLC

FLEXIBLE BAIL DEAD-END

FLEXIBLE BAIL ALUMINUM DEAD-END

PART#	DESCRIPTION	PKG QTY	CTN QTY	CTN WT.
AB760100F	#4-#2 ALUMINUM CONDUCTOR DEAD-END RED ORANGE FLEXIBLE BAIL	50	1	50
AB760200F	1/0-2/0 ALUMINUM CONDUCTOR DEAD-END GRAY-YELLOW FLEXIBLE BAIL	50	1	50
AB760300F	3/0-4/0 ALUMINUM CONDUCTOR DEAD-END PINK-BLACK FLEXIBLE BAIL	25	1	44
AB760400F	266.8 (18/1) - 336.4 (18/1) ALUMINUM CONDUCTOR DEAD-END GREEN-BROWN FLEXIBLE BAIL	20	1	40
AB760500F	397.5 (18/1) ALUMINUM CONDUCTOR DEAD-END BLUE FLEXIBLE BAIL	15	1	38
AB760600F	477 (18/1) ALUMINUM CONDUCTOR DEAD-END WHITE FLEXIBLE BAIL	15	1	37



Allied Bolt Products LLC

Z BAIL ALUMINUM DEAD-END

Z Bail Aluminum Dead-End

PART#	DESCRIPTION	PKG QTY	CTN QTY	CTN WT.
AB760100Z	#4-#2 ALUMINUM CONDUCTOR DEAD-END RED-ORANGE Z BAIL	50	1	50
AB760200Z	1/0-2/0 ALUMINUM CONDUCTOR DEAD-END GRAY-YELLOW Z BAIL	50	1	52
AB760300Z	3/0-4/0 ALUMINUM CONDUCTOR DEAD-END PINK-BLACK Z BAIL	50	1	52
AB760400Z	266.8 (18/1) - 336.4 (18/1) ALUMINUM CONDUCTOR DEAD-END GREEN-BROWN Z BAIL	20	1	46
AB760500Z	397.5 (18/1) ALUMINUM CONDUCTOR DEAD-END BLUE Z BAIL	15	1	42
AB760600Z	477 (18/1) ALUMINUM CONDUCTOR DEAD-END WHITE Z BAIL	15	1	42



CLEVIS BAIL DEAD-END
CLEVIS BAIL ALUMINUM DEAD-END

PART#	DESCRIPTION	PKG QTY	CTN QTY	CTN WT.
AB760100C	#4-#2 ALUMINUM CONDUCTOR DEAD-END RED-ORANGE CLEVIS BAIL	25	1	35
AB760200C	1/0-2/0 ALUMINUM CONDUCTOR DEAD-END GRAY-YELLOW CLEVIS BAIL	25	1	35
AB760300C	3/0-4/0 ALUMINUM CONDUCTOR DEAD-END PINK-BLACK CLEVIS BAIL	25	1	43
AB760400C	266.8 (18/1) - 336.4 (18/1) ALUMINUM CONDUCTOR DEAD-END GREEN-BROWN CLEVIS BAIL	15	1	44
AB760500C	397.5 (18/1) ALUMINUM CONDUCTOR DEAD-END BLUE CLEVIS BAIL	15	1	52
AB760600C	477 (18/1) ALUMINUM CONDUCTOR DEAD-END WHITE CLEVIS BAIL	15	1	51

Clamps and Markers For Guying



WIRE ROPE THIMBLE
WIRE ROPE THIMBLE

PART#	DESCRIPTION	PKG QTY	CTN QTY	CTN WT.
1060	1/4" WIRE ROPE THIMBLE	100	1	7
1061	5/16" WIRE ROPE THIMBLE	100	1	4
1062	3/8" WIRE ROPE THIMBLE	100	1	9
1063	1/2" WIRE ROPE THIMBLE	50	1	19
1064	5/8" WIRE ROPE THIMBLE	50	1	31



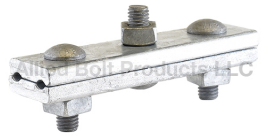
GUY CLAMP
ONE BOLT GUY CLAMP

PART#	DESCRIPTION	PKG QTY	CTN QTY	CTN WT.
5055	1/2" ONE BOLT GUY CLAMP 1-7/16" X 1-9/16" PLATES	50	1	32



TWO BOLT GUY CLAMP

PART#	DESCRIPTION	PKG QTY	CTN QTY	CTN WT.
5058	1/2" TWO BOLT GUY CLAMP 3-3/8" X 1-9/16" PLATES	50	1	69



THREE BOLT GUY CLAMP

PART#	DESCRIPTION	PKG QTY	CTN QTY	CTN WT.
5059	1/2" THREE BOLT GUY CLAMP 5-7/8" X 1-9/16" PLATES	25	1	42
5056	5/8" THREE BOLT GUY CLAMP 6" X 1-21/32" PLATES	25	1	55



MALLEABLE GUY CLAMP

MALLEABLE GUY CLIP

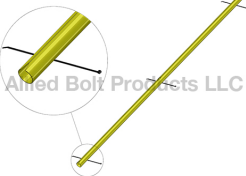
PART#	DESCRIPTION	PKG QTY	CTN QTY	CTN WT.
885	1/4" MALLEABLE GUY CLIP	100	1	14
886	5/16" MALLEABLE GUY CLIP	100	1	13
887	3/8" MALLEABLE GUY CLIP	50	1	15
888	1/2" MALLEABLE GUY CLIP	50	1	24



B STRAND SERVING SLEEVE

STRAND SERVING SLEEVE

PART#	DESCRIPTION	PKG QTY	CTN QTY	CTN WT.
847	1/4" STRAND SERVING SLEEVE	100	4	11
848	5/16" STRAND SERVING SLEEVE	50	4	12
849	3/8" STRAND SERVING SLEEVE	50	4	10
850	7/16" STRAND SERVING SLEEVE	50	1	6



GUY MARKERS

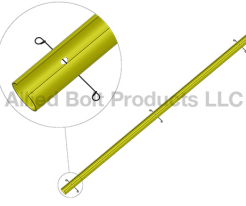
FULL ROUND GUY MARKER W/ CABLE TIES

PART#	DESCRIPTION	PKG QTY	CTN QTY	CTN WT.
11402	1-1/4" X 8' FULL ROUND YELLOW GUY MARKER WITH CABLE TIE	25	1	32
11404	1-1/2" X 8' FULL ROUND YELLOW GUY MARKER WITH CABLE TIE	25	1	33



"B" PROFILE GUY MARKER W/ HELICAL PIG TAIL

PART#	DESCRIPTION	PKG QTY	CTN QTY	CTN WT.
11401	1-1/4" X 8' "B" PROFILE GUY MARKER W/ HELICAL PIG TAIL	12	1	10
11415	1-1/2" X 8' "B" PROFILE GUY MARKER W/ HELICAL PIG TAIL	12	1	17



TWO THIRD ROUND YELLOW GUY MARKER W/ 3 WIRE TIES

PART#	DESCRIPTION	PKG QTY	CTN QTY	CTN WT.
11437	2-1/2" X 7' TWO THIRD ROUND YELLOW GUY MARKER W/ 3 WIRE TIES	15	1	18
12011	2" X 8' TWO THIRD ROUND YELLOW GUY MARKER W/ 3 WIRE TIES	15	1	19

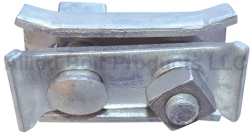


B GUY ROD CLAMP

PART#	DESCRIPTION	PKG QTY	CTN QTY	CTN WT.
2105	B GUY ROD CLAMP	5	1	29

CONDUCTOR CLAMP

Conductor Clamp



PART#	DESCRIPTION	PKG QTY	CTN QTY	CTN WT.
17994	CONDUCTOR CLAMP	40	1	41

DEAD-END CLEVIS/EXTENSION LINK



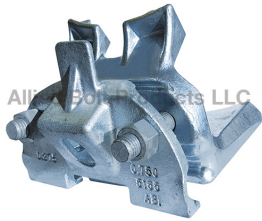
Allied Bolt Products LLC

PART#	DESCRIPTION	PKG QTY	CTN QTY	CTN WT.
5090	5/8" x 24" DEAD-END CLEVIS	10	1	32

Clamps for ACSR (Aluminum Conductor Steel Reinforced) Wire

AERIAL MESSENGER CABLE CLAMP

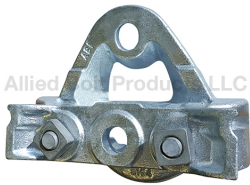
AERIAL MESSENGER CABLE CLAMP



Allied Bolt Products LLC

PART#	DESCRIPTION	PKG QTY	CTN QTY	CTN WT.
5165	AERIAL MESSENGER CABLE CLAMP	4	1	40

Aerial Cable Heavy Duty Messenger Clamp

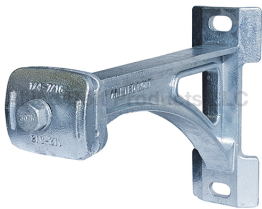


Allied Bolt Products LLC

PART#	DESCRIPTION	PKG QTY	CTN QTY	CTN WT.
5164	AERIAL CABLE HEAVY DUTY MESSENGER CLAMP	5	1	30

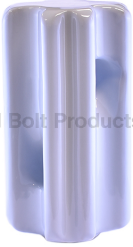
MESSENGER CABLE EXTENSION

MESSENGER CABLE EXTENSION



PART#	DESCRIPTION	PKG QTY	CTN QTY	CTN WT.
3119	12" MESSENGER CABLE EXTENSION	2	1	23
2998	24" MESSENGER CABLE EXTENSION	2	1	38

Strand Connectors



Allied Bolt Products LLC

GUY STRAIN INSULATOR
PORCELAIN GUY STRAIN INSULATOR

PART#	DESCRIPTION	PKG QTY	CTN QTY	CTN WT.
972	3/8" PORCELAIN GUY STRAIN INSULATOR - 10,000 LOAD ANSI 54-1	50	1	53
973	1/2" PORCELAIN GUY STRAIN INSULATOR - 12,000 LOAD ANSI 54-2	25	1	42
974	5/8" PORCELAIN GUY STRAIN INSULATOR - 20,000 LOAD ANSI 54-4	12	1	55



Allied Bolt Products LLC

B STRAND CONNECTOR
B STRAND CONNECTOR

PART#	DESCRIPTION	PKG QTY	CTN QTY	CTN WT.
2181	B STRAND CONNECTOR	10	1	14



Allied Bolt Products LLC

B STRAND POLE CONNECTOR
B STRAND POLE CONNECTOR

PART#	DESCRIPTION	PKG QTY	CTN QTY	CTN WT.
2175	B STRAND POLE CONNECTOR	10	1	38



Allied Bolt Products LLC

STRAND TIE STRAP
STRAIGHT STRAND TIE STRAP

PART#	DESCRIPTION	PKG QTY	CTN QTY	CTN WT.
8188	14" STRAIGHT STRAND TIE STRAP	25	1	36



Allied Bolt Products LLC

BENT STRAND TIE STRAP

PART#	DESCRIPTION	PKG QTY	CTN QTY	CTN WT.
8189	20" BENT STRAND TIE STRAP	25	1	45
8190	26" BENT STRAND TIE STRAP	25	1	57



CROSSOVER CLAMP
CROSSOVER CLAMP

PART#	DESCRIPTION	PKG QTY	CTN QTY	CTN WT.
4065	1/4"-3/8" CROSSOVER CLAMP	25	1	40

CROSSOVER CLAMP



PART#	DESCRIPTION	PKG QTY	CTN QTY	CTN WT.
4069	1/4" CROSSOVER CLAMP	50	1	34

Eyelets

STANDARD EYELET

STANDARD EYELET



PART#	DESCRIPTION	PKG QTY	CTN QTY	CTN WT.
2054	5/8" STANDARD EYELET	25	1	30
2055	3/4" STANDARD EYELET	25	1	39

STRAIGHT SINGLE STRAND EYELET

STRAIGHT SINGLE STRAND EYELET



PART#	DESCRIPTION	PKG QTY	CTN QTY	CTN WT.
2050	5/8" STRAIGHT SINGLE STRAND EYELET	25	1	29
2051	3/4" STRAIGHT SINGLE STRAND EYELET	25	1	31

SINGLE STRAND ANGLED EYELET

ANGLED SINGLE STRAND EYELET



PART#	DESCRIPTION	PKG QTY	CTN QTY	CTN WT.
2060	5/8" ANGLED SINGLE STRAND EYELET	25	1	36
2061	3/4" ANGLED SINGLE STRAND EYELET	25	1	35

Eye Nuts

SINGLE AND DUAL FORGED EYE NUT

SINGLE FORGED EYE NUT



PART#	DESCRIPTION	PKG QTY	CTN QTY	CTN WT.
5050	5/8"-11 SINGLE FORGED EYE NUT	50	1	40
5051	3/4"-10 SINGLE FORGED EYE NUT	50	1	41



Allied Bolt Products, LLC

DUAL FORGED EYE NUT

PART#	DESCRIPTION	PKG QTY	CTN QTY	CTN WT.
5045	5/8"-11 DUAL STRAND EYE NUT	25	1	30
5046	3/4"-10 DUAL FORGED EYE NUT	25	1	44

OVAL EYE NUT

OVAL EYE NUT



Allied Bolt Products, LLC

PART#	DESCRIPTION	PKG QTY	CTN QTY	CTN WT.
5875	1/2"-13 OVAL EYE NUT	50	1	28
5876	5/8"-11 OVAL EYE NUT	50	1	27
5877	3/4"-10 OVAL EYE NUT	50	1	34



Allied Bolt Products, LLC

FORGED OVAL EYE NUT

PART#	DESCRIPTION	PKG QTY	CTN QTY	CTN WT.
5878	7/8"-9 OVAL EYE NUT	25	1	39
5879	1"-8 OVAL EYE NUT	25	1	42

Suspension Clamps and Straps

STRAIGHT CABLE SUSPENSION CLAMP

CABLE SUSPENSION CLAMP



Allied Bolt Products, LLC

PART#	DESCRIPTION	PKG QTY	CTN QTY	CTN WT.
5080	B CABLE SUSPENSION CLAMP FOR 5/8" THRU BOLTS	25	1	43
5082	SUSPENSION CLAMP WITH FLAT KEEPER PLATE FOR 5/8" THRU BOLTS	25	1	41
5087	THREE BOLT CABLE SUSPENSION CLAMP FOR 3/4" THRU BOLTS	25	1	47

ONE BOLT CABLE SUSPENSION CLAMP



Allied Bolt Products, LLC

PART#	DESCRIPTION	PKG QTY	CTN QTY	CTN WT.
5074	ONE BOLT CABLE SUSPENSION CLAMP FOR 5/8" THRU BOLTS	50	1	38

ANGLE SUSPENSION CLAMP

B CORNER SUSPENSION CLAMP



Allied Bolt Products, LLC

PART#	DESCRIPTION	PKG QTY	CTN QTY	CTN WT.
5081	B CORNER SUSPENSION CLAMP	10	1	36

CORNER SUSPENSION CLAMP



PART#	DESCRIPTION	PKG QTY	CTN QTY	CTN WT.
5083	CORNER SUSPENSION CLAMP FOR 5/8" THRU BOLT	10	1	21

C CABLE CLAMP



C CABLE CLAMP

PART#	DESCRIPTION	PKG QTY	CTN QTY	CTN WT.
4080	C CABLE CLAMP	16	1	39

STRAIGHT CABLE SUSPENSION CLAMP STAINLESS STEEL



CABLE SUSPENSION CLAMP

PART#	DESCRIPTION	PKG QTY	CTN QTY	CTN WT.
5080SS	B CABLE SUSPENSION CLAMP STAINLESS STEEL	25	1	46

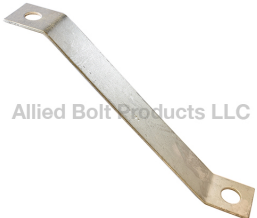
REINFORCING STRAP



REINFORCING STRAPS

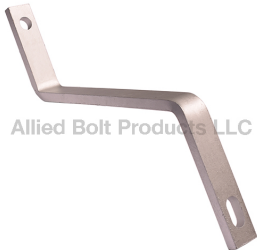
PART#	DESCRIPTION	PKG QTY	CTN QTY	CTN WT.
102	C REINFORCING STRAP	100	1	51
8003	D REINFORCING STRAP	100	1	42
103	S REINFORCING STRAP	100	1	31

REINFORCING BRACE



PART#	DESCRIPTION	PKG QTY	CTN QTY	CTN WT.
8001	1-3/8" REINFORCING BRACE	25	1	19
8000	2" REINFORCING BRACE	25	1	22

REINFORCING BRACE FOR 11" EXTENSION BOLT



REINFORCING BRACE FOR 11" EXTENSION BOLT

PART#	DESCRIPTION	PKG QTY	CTN QTY	CTN WT.
8004	REINFORCING BRACE FOR 11" EXTENSION BOLT	10	1	36

CORNER ATTACHMENT BRACKET

CORNER ATTACHMENT BRACKET



PART#	DESCRIPTION	PKG QTY	CTN QTY	CTN WT.
5086	CORNER ATTACHMENT BRACKET	25	1	36

TANGENT SUPPORT CLAMP

TANGENT SUPPORT CLAMP



PART#	DESCRIPTION	PKG QTY	CTN QTY	CTN WT.
5902	TANGENT SUPPORT CLAMP .109" TO .134" FOR 5/8" BOLT	1	50	16
5904	TANGENT SUPPORT CLAMP .148" TO .250" FOR 5/8" BOLT	1	25	9

J HOOK FOR TANGENT SUPPORT



PART#	DESCRIPTION	PKG QTY	CTN QTY	CTN WT.
5897	J HOOK FOR TANGENT SUPPORT (5/8") FOR 5/8" BOLT	50	1	10

MESSENGER SUPPORT CLAMP

MESSENGER SUPPORT CLAMP



PART#	DESCRIPTION	PKG QTY	CTN QTY	CTN WT.
10075	MESSENGER SUPPORT CLAMP	100	1	38

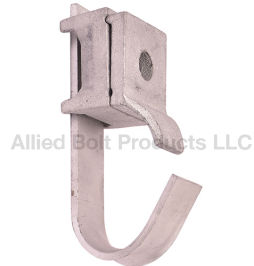
AERIAL MESSENGER CLAMP WITH HOOK

THREE BOLT AERIAL CABLE MESSENGER CLAMP W/ HOOK



PART#	DESCRIPTION	PKG QTY	CTN QTY	CTN WT.
8345	THREE BOLT AERIAL CABLE MESSENGER CLAMP W/ HOOK	10	1	40

SINGLE BOLT AERIAL CABLE MESSENGER CLAMP W/ HOOK



PART#	DESCRIPTION	PKG QTY	CTN QTY	CTN WT.
8346	SINGLE BOLT AERIAL CABLE MESSENGER CLAMP W/ HOOK	20	1	40



Allied Bolt Products LLC

B PLACING HOOK

B PLACING HOOK

PART#	DESCRIPTION	PKG QTY	CTN QTY	CTN WT.
222	B PLACING HOOK	10	1	24

B SUPPORT CLAMP

B SUPPORT CLAMP



Allied Bolt Products LLC

PART#	DESCRIPTION	PKG QTY	CTN QTY	CTN WT.
2510	B SUPPORT CLAMP	5	1	10

POLY B CABLE GUARD

1/2" B CABLE GUARD



Allied Bolt Products LLC

PART#	DESCRIPTION	PKG QTY	CTN QTY	CTN WT.
9009-58	1/2" X 8" B CABLE GUARD	300	1	150

1" B CABLE GUARD



Allied Bolt Products LLC

PART#	DESCRIPTION	PKG QTY	CTN QTY	CTN WT.
9009-18	1" X 8" B CABLE GUARD	60	1	60
9009-110	1" X 10" B CABLE GUARD	90	1	8
9009-130	1" X 30" B CABLE GUARD	30	1	7

1-1/2" B CABLE GUARD



Allied Bolt Products LLC

PART#	DESCRIPTION	PKG QTY	CTN QTY	CTN WT.
9009-158	1-1/2" X 8" B CABLE GUARD	25	1	35

2" B CABLE GUARD



Allied Bolt Products LLC

PART#	DESCRIPTION	PKG QTY	CTN QTY	CTN WT.
9009-24	2" X 4" B CABLE GUARD	30	1	29
9009-28	2" X 8" B CABLE GUARD	15	1	57

U Guards and Ground Wire Molding



Allied Bolt Products LLC

U CABLE GUARD

U CABLE GUARD - TYPE 1

PART#	DESCRIPTION	PKG QTY	CTN QTY	CTN WT.
9006-U0	U-0 CABLE GUARD 8FT	5	1	35
9006-U1	U-1 CABLE GUARD 8FT	5	1	45
9006-U2	U-2 CABLE GUARD 8FT	5	1	60
9006-U3	U-3 CABLE GUARD 8FT	2	1	28
9006-U4	U-4 CABLE GUARD 8FT	2	1	36
9006-U15	U-15 CABLE GUARD 5FT	5	1	20
9006-U25	U-25 CABLE GUARD 5FT	5	1	43



Allied Bolt Products LLC

U CABLE GUARD - TYPE 2

PART#	DESCRIPTION	PKG QTY	CTN QTY	CTN WT.
9006-U1A	U-1A CABLE GUARD 8 FT	5	1	45



U CABLE GUARD STRAP

U CABLE GUARD STRAP

PART#	DESCRIPTION	PKG QTY	CTN QTY	CTN WT.
9005-U0	U CABLE GUARD STRAP SZ 0	50	4	14
9005-U1	U CABLE GUARD STRAP SZ 1	25	4	12
9005-U1A	U CABLE GUARD STRAP SZ 1A	25	4	14
9005-U2	U CABLE GUARD STRAP SZ 2	25	8	40
9005-U3	U CABLE GUARD STRAP SZ 3	25	1	13
9005-U4	U CABLE GUARD STRAP SZ 4	25	1	16
9005-U6	U CABLE GUARD STRAP SZ 6	25	1	20



Allied Bolt Products LLC

GROUND WIRE MOLDING

GROUND WIRE MOLDING

PART#	DESCRIPTION	PKG QTY	CTN QTY	CTN WT.
11400	1/2" X 8' GROUND WIRE MOLDING BLACK	125	1	50
11400GY	1/2" x 8' GROUND WIRE MOLDING GRAY	125	1	52
11441	5/8" X 8' GROUND WIRE MOLDING BLACK	80	1	46
11442	3/4" X 8' GROUND WIRE MOLDING BLACK	50	1	18
11443	1" X 8' GROUND WIRE MOLDING BLACK	25	1	15

POLY CABLE GUARD

POLYETHYLENE U CABLE GUARD



PART#	DESCRIPTION	PKG QTY	CTN QTY	CTN WT.
9001-18	1" X 8' POLYETHYLENE U CABLE GUARD	6	1	60
9001-110	1" X 10' POLYETHYLENE U CABLE GUARD	6	1	60
9001-28	2" X 8' POLYETHYLENE U CABLE GUARD	6	1	60
9001-210	2" X 10' POLYETHYLENE U CABLE GUARD	6	1	60
9001-35	3" X 5' POLYETHYLENE U CABLE GUARD	6	1	60
9001-38	3" X 8' POLYETHYLENE U CABLE GUARD	6	1	60
9001-310	3" X 10' POLYETHYLENE U CABLE GUARD	6	1	60
9001-48	4" X 8' POLYETHYLENE U CABLE GUARD	6	1	60
9001-410	4" X 10' POLYETHYLENE U CABLE GUARD	6	1	60
9001-55	5" X 5' POLYETHYLENE U CABLE GUARD	6	1	60
9001-58	5" X 8' POLYETHYLENE U CABLE GUARD	6	1	60
9001-510	5" X 10' POLYETHYLENE U CABLE GUARD	6	1	60
9001-65	6" X 5' POLYETHYLENE U CABLE GUARD	6	1	60
9001-610	6" X 10' POLYETHYLENE U CABLE GUARD	6	1	60

STEEL FLANGED U GUARD HOT DIP GALVANIZED

1" STEEL FLANGED U GUARD HOT DIP GALVANIZED



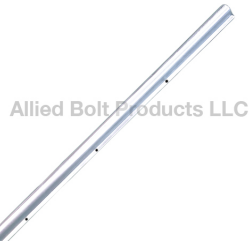
PART#	DESCRIPTION	PKG QTY	CTN QTY	CTN WT.
9004-110	1" X 10' STEEL FLANGED U GUARD HOT DIP GALVANIZED	1	1	9

1-1/4" STEEL FLANGED U GUARD HOT DIP GALVANIZED



PART#	DESCRIPTION	PKG QTY	CTN QTY	CTN WT.
9004-1145	1-1/4" X 5' STEEL FLANGED U GUARD HOT DIP GALVANIZED	1	1	6
9004-1148	1-1/4" X 8' STEEL FLANGED U GUARD HOT DIP GALVANIZED	1	1	10

2" STEEL FLANGED U GUARD HOT DIP GALVANIZED



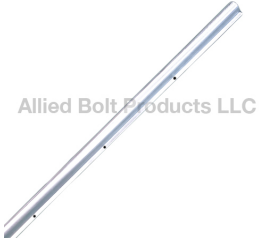
PART#	DESCRIPTION	PKG QTY	CTN QTY	CTN WT.
9004-25	2" X 5' STEEL FLANGED U GUARD HOT DIP GALVANIZED	1	1	9
9004-28	2" X 8' STEEL FLANGED U GUARD HOT DIP GALVANIZED	1	1	14
9004-210	2" X 10' STEEL FLANGED U GUARD HOT DIP GALVANIZED	1	1	18

3" STEEL FLANGED U GUARD HOT DIP GALVANIZED



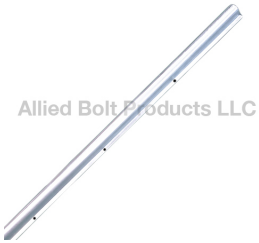
PART#	DESCRIPTION	PKG QTY	CTN QTY	CTN WT.
9004-35	3" X 5' STEEL FLANGED U GUARD HOT DIP GALVANIZED	1	1	12
9004-38	3" X 8' STEEL FLANGED U GUARD HOT DIP GALVANIZED	1	1	19
9004-310	3" X 10' STEEL FLANGED U GUARD HOT DIP GALVANIZED	1	1	24

4" STEEL FLANGED U GUARD HOT DIP GALVANIZED



PART#	DESCRIPTION	PKG QTY	CTN QTY	CTN WT.
9004-45	4" X 5' STEEL FLANGED U GUARD HOT DIP GALVANIZED	1	1	15
9004-48	4" X 8' STEEL FLANGED U GUARD HOT DIP GALVANIZED	1	1	27
9004-410	4" X 10' STEEL FLANGED U GUARD HOT DIP GALVANIZED	1	1	34

5" STEEL FLANGED U GUARD HOT DIP GALVANIZED



PART#	DESCRIPTION	PKG QTY	CTN QTY	CTN WT.
9004-55	5" X 5' STEEL FLANGED U GUARD HOT DIP GALVANIZED	1	1	18
9004-58	5" X 8' STEEL FLANGED U GUARD HOT DIP GALVANIZED	1	1	28
9004-510	5" X 10' STEEL FLANGED U GUARD HOT DIP GALVANIZED	1	1	36

6" STEEL FLANGED U GUARD HOT DIP GALVANIZED



PART#	DESCRIPTION	PKG QTY	CTN QTY	CTN WT.
9004-65	6" X 5' STEEL FLANGED U GUARD HOT DIP GALVANIZED	1	1	22

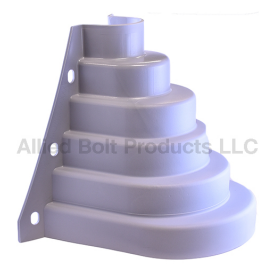
7" STEEL FLANGED U GUARD HOT DIP GALVANIZED



PART#	DESCRIPTION	PKG QTY	CTN QTY	CTN WT.
9004-75	7" X 5' STEEL FLANGED U GUARD HOT DIP GALVANIZED	1	1	25

PLASTIC U-GUARD ADAPTER

PLASTIC U-GUARD ADAPTOR



PART#	DESCRIPTION	PKG QTY	CTN QTY	CTN WT.
9001	PLASTIC U-GUARD ADAPTOR FITS 2"-6" PVC U GUARDS	10	1	7

Drive Hooks

DRIVE HOOK

DRIVE HOOK

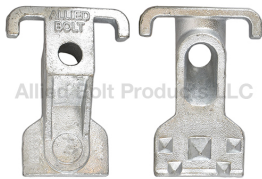


PART#	DESCRIPTION	PKG QTY	CTN QTY	CTN WT.
2001	5/16" X 3-1/2" DRIVE HOOK	500	1	53
920	7/16" X 4-3/4" DRIVE HOOK	25	8	51
9200	7/16" X 4-3/4" STAINLESS DRIVE HOOK	25	8	51

Guy Hook Attachments

B GUY HOOK

B GUY HOOK



PART#	DESCRIPTION	PKG QTY	CTN QTY	CTN WT.
5060	5/8" B GUY HOOK	25	1	38
5061	3/4" B GUY HOOK	25	1	46
5062	1" B GUY HOOK	10	1	32

C GUY HOOK

C GUY HOOK



PART#	DESCRIPTION	PKG QTY	CTN QTY	CTN WT.
5084	5/8" C GUY HOOK	25	1	46
5085	3/4" C GUY HOOK	25	1	61
5094	1" C GUY HOOK	10	1	46

COMBINATION TYPE GUY HOOK

COMBINATION TYPE GUY HOOK WITH 11/16" MOUNTING HOLES



PART#	DESCRIPTION	PKG QTY	CTN QTY	CTN WT.
22001	COMBINATION TYPE GUY HOOK WITH 11/16" MOUNTING HOLES	20	1	35
22001LT	COMBINATION TYPE GUY HOOK WITH 11/16" MOUNTING HOLES W/O SPURS	20	1	34
22002	COMBINATION TYPE GUY HOOK WITH 11/16" AND 13/16" MOUNTING HOLES	20	1	35
22002LT	COMBINATION TYPE GUY HOOK WITH 11/16" AND 13/16" MOUNTING HOLES W/O SPURS	20	1	34

POLE EYE PLATE GUY HOOK

POLE EYE PLATE GUY HOOK



PART#	DESCRIPTION	PKG QTY	CTN QTY	CTN WT.
22007	POLE EYE PLATE GUY HOOK WITH 13/16" MOUNTING HOLES	10	1	62
22008	POLE EYE PLATE GUY HOOK WITH 15/16" MOUNTING HOLES	10	1	64

POLE EYE PLATE ATTACHMENT

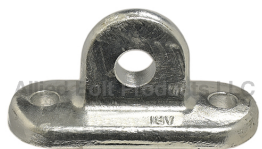
POLE EYE PLATE ATTACHMENT



PART#	DESCRIPTION	PKG QTY	CTN QTY	CTN WT.
22006	POLE EYE PLATE ATTACHMENT	25	1	52

DEAD-END TEE GUY ATTACHMENT

PART#	DESCRIPTION	PKG QTY	CTN QTY	CTN WT.
22003	DEAD-END TEE GUY ATTACHMENT	10	1	64



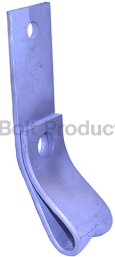


Allied Bolt Products LLC

ONE BOLT GUY ATTACHMENT

ONE BOLT GUY ATTACHMENT

PART#	DESCRIPTION	PKG QTY	CTN QTY	CTN WT.
8070	ONE BOLT GUY ATTACHMENT	25	1	25



Allied Bolt Products LLC

TWO BOLT LONG GUY ATTACHMENT

TWO BOLT LONG GUY ATTACHMENT

PART#	DESCRIPTION	PKG QTY	CTN QTY	CTN WT.
8072	TWO BOLT LONG GUY ATTACHMENT	20	1	33



Allied Bolt Products LLC

J GUY HOOK

PART#	DESCRIPTION	PKG QTY	CTN QTY	CTN WT.
2575	J GUY HOOK	50	1	30



Allied Bolt Products LLC

SIDEWALK GUYING FIXTURE

SIDEWALK GUY FIXTURE FOR 2" PIPE

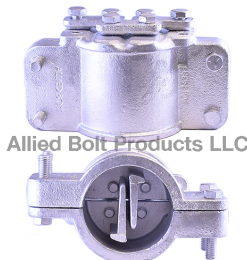
PART#	DESCRIPTION	PKG QTY	CTN QTY	CTN WT.
1429	POLE PLATE AND END FITTING FOR 2" PIPE KIT	1	1	5
1436	POLE PLATE FOR SIDEWALK GUYING FIXTURE FOR 2" PIPE	5	1	25
1437	END FITTING FOR SIDEWALK GUYING FIXTURE FOR 2" PIPE	5	1	15



Allied Bolt Products LLC

SIDEWALK GUY FIXTURE FOR 2-1/2" PIPE

PART#	DESCRIPTION	PKG QTY	CTN QTY	CTN WT.
1450	POLE PLATE AND END FITTING FOR 2-1/2" PIPE KIT	1	1	5
1420	POLE PLATE FOR SIDEWALK GUYING FIXTURE FOR 2-1/2" PIPE	5	1	30
1421	END FITTING FOR SIDEWALK GUY FIXTURE FOR 2-1/2" PIPE	5	1	16



Allied Bolt Products LLC

TRIPLE SIDEWALK END FITTING FOR 2-1/2" PIPE

PART#	DESCRIPTION	PKG QTY	CTN QTY	CTN WT.
1438	TRIPLE SIDEWALK END FITTING FOR 2-1/2" PIPE	5	1	39

Staples

B STAPLE (CUT POINT)



B STAPLE

PART#	DESCRIPTION	PKG QTY	CTN QTY	CTN WT.
738	1/4" X 3/4" X .148" CUT POINT 'B' STAPLE	1	40	41
699	1/4" X 1-1/4" X .148" CUT POINT 'B' STAPLE	1	32	33
695	1/4" X 1-1/2" X .148" CUT POINT 'B' STAPLE	1	32	33
696	5/16" X 1-1/2" X .148" CUT POINT 'B' STAPLE	1	32	33
698	3/8" X 2" X .162" CUT POINT 'B' STAPLE	1	32	33

GALVANIZED STAPLE (ROLLED POINT)



STAPLE GALVANIZED (ROLLED POINT)

PART#	DESCRIPTION	PKG QTY	CTN QTY	CTN WT.
25112	3/8" x 1" X .125" GALVANIZED STAPLE (ROLLED POINT)	100	32	24
25116	3/8" x 1-1/2" X .148" GALVANIZED STAPLE (ROLLED POINT)	100	8	12
25117	3/8" x 1-3/4" X .148" GALVANIZED STAPLE (ROLLED POINT)	100	4	7
25115	1/2" x 2" X .162" GALVANIZED STAPLE (ROLLED POINT)	100	8	20
25021	5/8" x 1-3/4" X .187" GALVANIZED STAPLE (ROLLED POINT)	100	4	12
25003	5/8" X 2" X .162" GALVANIZED STAPLE (ROLLED POINT)	100	4	10
25022	3/4" X 2" X .187" GALVANIZED STAPLE (ROLLED POINT)	100	4	10
25023	7/8" x 2-1/4" X .187" GALVANIZED STAPLE (ROLLED POINT)	100	4	20
25004	1-1/16" X 2" X .187" GALVANIZED STAPLE (ROLLED POINT)	100	4	12
25005	1-1/16" X 3" X .250" GALVANIZED STAPLE (ROLLED POINT)	100	4	33
25024	1-1/4" x 2-1/2" X .250" GALVANIZED STAPLE (ROLLED POINT)	100	1	6
25113	1-1/2" X 3" X .250" GALVANIZED STAPLE (ROLLED POINT)	100	4	34
25114	1-3/4" X 3-1/2" X .250" GALVANIZED STAPLE (ROLLED POINT)	100	1	10

BARBED STAPLE



BARBED STAPLE

PART#	DESCRIPTION	PKG QTY	CTN QTY	CTN WT.
22096	3/8" X 1-1/2" X .131" BARBED STAPLE	100	8	12
22097	3/8" X 2" x .131" BARBED STAPLE	100	8	16
22099	5/8" X 2" X .165" BARBED STAPLE	100	8	26
22098	1-1/16" X 3" x .218" BARBED STAPLE	100	4	34

COPPER COATED STAPLE (ROLLED POINT)



COPPER COATED STAPLE (ROLLED POINT)

PART#	DESCRIPTION	PKG QTY	CTN QTY	CTN WT.
25002	1/4" X 1" X .114" COPPER COATED STAPLE (ROLLED POINT)	100	40	20
25007	5/16" X 1-1/2" X .144" COPPER COATED STAPLE (ROLLED POINT)	100	16	20
25008	3/8" X 1-1/2" X .144" COPPER COATED STAPLE (ROLLED POINT)	100	8	11
25009	3/8" X 1-3/4" X .144" COPPER COATED STAPLE (ROLLED POINT)	100	8	12
25010	1/2" X 2" X .162" COPPER COATED STAPLE (ROLLED POINT)	100	8	14
25011	5/8" X 2" X .162" COPPER COATED STAPLE (ROLLED POINT)	100	4	10
25015	3/4" X 3" X .250" COPPER COATED STAPLE (ROLLED POINT)	100	1	8
25016	1" X 3" X .250 COPPER COATED STAPLE (ROLLED POINT)	100	1	8
25001	1-1/4" X 1/4" X .114" COPPER COATED STAPLE (ROLLED POINT)	100	32	21
25012	1-1/16 X 2" X .187" COPPER COATED STAPLE (ROLLED POINT)	100	4	13
25014	1-1/16" X 2-1/2" X .187" COPPER COATED STAPLE (ROLLED POINT)	100	1	4
25017	1-1/16" X 3" X .250 COPPER COATED STAPLE (ROLLED POINT)	100	1	9
25018	1-1/2" X 3" X .250 COPPER COATED STAPLE (ROLLED POINT)	100	1	8
25019	1-1/2" X 3-1/2" X .250" COPPER COATED STAPLE (ROLLED POINT)	100	1	10

Insulator Hardware



NYLON CROSSARM PIN (LOW VOLTAGE)

5/8" SHORT SHANK CROSSARM PIN W/ 1" NYLON THREAD

PART#	DESCRIPTION	PKG QTY	CTN QTY	CTN WT.
2718	5/8" x 5" x 1-1/2" SHORT SHANK NYLON CROSSARM PIN	50	1	50
2719	5/8" x 6" x 1-1/2" SHORT SHANK NYLON CROSSARM PIN	45	1	50
2720	5/8" x 6" x 2-1/2" SHORT SHANK NYLON CROSSARM PIN	45	1	47



3/4" SHORT SHANK CROSSARM PIN W/ 1" NYLON THREAD

PART#	DESCRIPTION	PKG QTY	CTN QTY	CTN WT.
2721	3/4" x 6" x 1-3/4" SHORT SHANK NYLON CROSSARM PIN	25	1	40
2723	3/4" x 7" x 2-1/2" SHORT SHANK NYLON CROSSARM PIN	25	1	49



5/8" LONG SHANK CROSSARM PIN W/ 1" NYLON THREAD

PART#	DESCRIPTION	PKG QTY	CTN QTY	CTN WT.
2711	5/8" X 5" X 5-3/4" LONG SHANK NYLON CROSSARM PIN	25	1	35
2713	5/8" X 6" X 5-3/4" LONG SHANK CROSSARM PIN	25	1	37
2712	5/8" X 5" X 6-1/2" LONG SHANK NYLON CROSSARM PIN	25	1	36
2714	5/8" X 6" X 6-1/2" LONG SHANK NYLON CROSSARM PIN	25	1	38
2716	5/8" X 5" X 8" LONG SHANK NYLON CROSSARM PIN	25	1	40
2709	5/8" X 6" X 7-1/2" LONG SHANK NYLON CROSSARM PIN	25	1	50



3/4" LONG SHANK CROSSARM PIN W/ 1" NYLON THREAD

PART#	DESCRIPTION	PKG QTY	CTN QTY	CTN WT.
2715	3/4" X 6" X 6-1/2" LONG SHANK NYLON CROSSARM PIN	20	1	47
2717	3/4" X 6" X 8" LONG SHANK NYLON CROSSARM PIN	20	1	53



HIGH VOLTAGE PIN

HIGH VOLTAGE 1" NYLON THREAD CROSSARM PIN

PART#	DESCRIPTION	PKG QTY	CTN QTY	CTN WT.
2740	5/8" X 6" X 6-1/2" HIGH VOLTAGE 1" NYLON THREAD CROSSARM PIN	10	1	26
2741	5/8" X 8" X 5-3/4" HIGH VOLTAGE 1" NYLON THREAD CROSSARM PIN	10	1	30
2743	3/4" X 7" X 6-1/2" HIGH VOLTAGE 1" NYLON THREAD CROSSARM PIN	10	1	31
2742	3/4" X 8" X 6-1/2" HIGH VOLTAGE 1" NYLON THREAD CROSSARM PIN	10	1	30

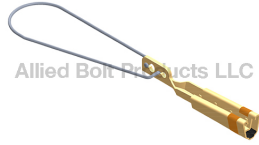


HIGH VOLTAGE 1-3/8" NYLON THREAD CROSSARM PIN

PART#	DESCRIPTION	PKG QTY	CTN QTY	CTN WT.
2744	5/8" X 7" X 7" HIGH VOLTAGE 1-3/8" NYLON THREAD CROSSARM PIN	10	1	32
2724	3/4" x 7" x 1-3/4" HIGH VOLTAGE 1-3/8" NYLON THREAD CROSSARM PIN	25	1	50
2746	3/4" X 7" X 7" HIGH VOLTAGE 1-3/8" NYLON THREAD CROSSARM PIN	10	1	42
2725	3/4" x 8" x 1-3/4" HIGH VOLTAGE 1-3/8" NYLON THREAD CROSSARM PIN	25	1	79
2745	3/4" X 8" X 7" HIGH VOLTAGE 1-3/8" NYLON THREAD CROSSARM PIN	10	1	44
2747	3/4" X 10" X 7" HIGH VOLTAGE 1-3/8" NYLON THREAD CROSSARM PIN	10	1	45

SERVICE WEDGE CLAMP

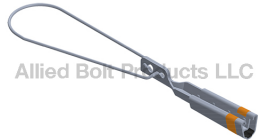
SOLID WEDGE CLAMP WITH IRRIDITE



Allied Bolt Products LLC

PART#	DESCRIPTION	PKG QTY	CTN QTY	CTN WT.
10076	SMALL (#2- 6) WEDGE CLAMP W/ IRRIDITE	100	1	15
10077	MEDIUM (1/0- #4) WEDGE CLAMP W/ IRRIDITE	50	1	13
10078	LARGE (4/0- 2/0) WEDGE CLAMP W/ IRRIDITE	50	1	14

SOLID WEDGE CLAMP NON-IRRIDITE



Allied Bolt Products LLC

PART#	DESCRIPTION	PKG QTY	CTN QTY	CTN WT.
10076NI	SMALL (#2- 6) WEDGE CLAMP NON-IRRIDITE	100	1	15
10077NI	MEDIUM (1/0- #4) WEDGE CLAMP W/ NON-IRRIDITE	50	1	14
10078NI	LARGE (4/0- 2/0) WEDGE CLAMP NON-IRRIDITE	50	1	14

FLEXIBLE BAIL WEDGE CLAMP NON-IRRIDITE



Allied Bolt Products LLC

PART#	DESCRIPTION	PKG QTY	CTN QTY	CTN WT.
10076NI-FL	SMALL (#2- 6) FLEXIBLE WEDGE CLAMP	100	1	15
10077NI-FL	MEDIUM (1/0- #4) FLEXIBLE WEDGE CLAMP	50	1	17
10078NI-FL	LARGE (4/0- 2/0) FLEXIBLE WEDGE CLAMP	50	1	17

POLE TOP PIN

POLE TOP PIN W/ 1" NYLON THREAD



Allied Bolt Products LLC

PART#	DESCRIPTION	PKG QTY	CTN QTY	CTN WT.
2733	15" POLE TOP PIN W/ 2 HOLES (LOWER HOLE IS SLOTTED) 1" NYLON THREAD	10	1	52
2730	18" POLE TOP PIN W/ 3 HOLES (LOWER HOLE IS SLOTTED) 1" NYLON THREAD	10	1	43
2734	20" POLE TOP PIN W/ 2 HOLES (LOWER HOLE IS SLOTTED) 1" NYLON THREAD	10	1	33
2731	20" POLE TOP PIN W/ 3 HOLES (LOWER HOLE IS SLOTTED) 1" NYLON THREAD	10	1	33
2732	24" POLE TOP PIN W/ 3 HOLES (LOWER HOLE IS SLOTTED) 1" NYLON THREAD	10	1	44

POLE TOP PIN W/ 1- 3/8" NYLON THREAD



Allied Bolt Products LLC

PART#	DESCRIPTION	PKG QTY	CTN QTY	CTN WT.
2736	20" POLE TOP PIN W/ 2 HOLES (LOWER HOLE IS SLOTTED) 1-3/8" NYLON THREAD	5	1	17
2737	24" POLE TOP PIN W/ 2 HOLES (LOWER HOLE IS SLOTTED) 1-3/8" NYLON THREAD	5	1	30

CLAMP TYPE CROSSARM PIN

CLAMP TYPE CROSSARM PIN



Allied Bolt Products LLC

PART#	DESCRIPTION	PKG QTY	CTN QTY	CTN WT.
6425	1" CLAMP TYPE CROSSARM PIN	5	1	27
6426	1-3/8" CLAMP TYPE CROSSARM PIN	5	1	28



OFFSET POLE TOP PIN

PART#	DESCRIPTION	PKG QTY	CTN QTY	CTN WT.
2735	OFFSET POLE TOP PIN W/ 1-3/8" NYLON THREAD	5	1	30



INSULATOR STUD
LONG SHANK INSULATOR STUD HDG

PART#	DESCRIPTION	PKG QTY	CTN QTY	CTN WT.
345814	5/8" X 7" LONG SHANK INSULATOR STUD HDG	25	1	32
345810	5/8" X 7-1/2" LONG SHANK INSULATOR STUD HDG	25	1	31
345812	5/8" X 10" LONG SHANK INSULATOR STUD HDG	25	1	36
345816	5/8" X 10" LONG SHANK INSULATOR STUD HDG	25	1	32
345818	5/8" X 12" LONG SHANK INSULATOR STUD HDG	25	1	40
345820	5/8" X 14" LONG SHANK INSULATOR STUD HDG	20	1	43
345822	3/4" X 7-1/2" LONG SHANK INSULATOR STUD HDG	25	1	37
345824	3/4" X 10" LONG SHANK INSULATOR STUD HDG	25	1	45



SHORT SHANK INSULATOR STUD HDG

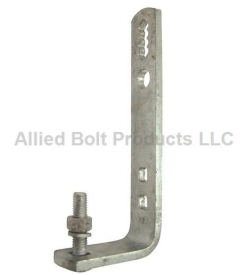
PART#	DESCRIPTION	PKG QTY	CTN QTY	CTN WT.
345826	5/8" X 1-3/4" SHORT SHANK INSULATOR STUD HDG	25	1	14
345828	3/4" X 1-3/4" SHORT SHANK INSULATOR STUD HDG	25	1	15



ANTI-STATIC CLIP

Insulator Hardware

PART#	DESCRIPTION	PKG QTY	CTN QTY	CTN WT.
2965	ANTI-STATIC CLIP	550	1	44



MOUNTING BRACKET

L MOUNTING BRACKET

PART#	DESCRIPTION	PKG QTY	CTN QTY	CTN WT.
2950	L MOUNTING BRACKET	1	16	49
2953	L MOUNTING BRACKET WITH BACK STRAP	1	16	78



L MOUNTING BRACKET WITH BACK STRAP ASSEMBLY

PART#	DESCRIPTION	PKG QTY	CTN QTY	CTN WT.
2951	L MOUNTING BRACKET WITH BACK STRAP ASSEMBLY w/5" BOLTS	1	16	45
2952	L MOUNTING BRACKET WITH BACKSTRAP ASSEMBLY w/6" BOLTS	1	16	45



ALUMINUM MOUNTING BRACKET

PART#	DESCRIPTION	PKG QTY	CTN QTY	CTN WT.
2955	ALUMINUM MOUNTING BRACKET	100	1	28



POLE TOP BRACKET

POLE TOP BRACKET

PART#	DESCRIPTION	PKG QTY	CTN QTY	CTN WT.
5160	POLE TOP BRACKET	10	1	40
5161	LARGE POLE TOP BRACKET	5	1	60



CENTERING WASHER FOR CROSSARM PIN

BOTTOM CENTERING WASHER FOR CROSSARM PIN

PART#	DESCRIPTION	PKG QTY	CTN QTY	CTN WT.
8655	BOTTOM CENTERING WASHER FOR 5/8" CROSSARM PIN	125	1	50
8657	BOTTOM CENTERING WASHER FOR 3/4" CROSSARM PIN	125	1	50

Pole Plates

DOUBLE ARMING PLATE

DOUBLE ARMING PLATE



PART#	DESCRIPTION	PKG QTY	CTN QTY	CTN WT.
5905	DOUBLE ARMING PLATE 16"	10	1	46
5906	DOUBLE ARMING PLATE 24"	5	1	42

POLE GAIN



PART#	DESCRIPTION	PKG QTY	CTN QTY	CTN WT.
4078	5-1/4" x 4" POLE GAIN	25	1	35



LIFT PLATE

LIFT PLATE

PART#	DESCRIPTION	PKG QTY	CTN QTY	CTN WT.
5182	2 HOLE LIFT PLATE	25	1	31
2820	3 HOLE LIFT PLATE	50	1	54



STRAIN PLATE

PART#	DESCRIPTION	PKG QTY	CTN QTY	CTN WT.
5180	STRAIN PLATE	25	1	33



B GUY STRAP

B GUY STRAP

PART#	DESCRIPTION	PKG QTY	CTN QTY	CTN WT.
5183	B GUY STRAP	20	1	39

Underground Racks



CABLE RACK HOOK

CABLE RACK HOOK

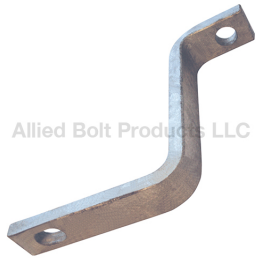
PART#	DESCRIPTION	PKG QTY	CTN QTY	CTN WT.
9600-4	4" CABLE RACK HOOK	100	1	43
9600-7	7-1/2" CABLE RACK HOOK	50	1	54
9600-10L	10" CABLE RACK HOOK	51	1	50
9600-10	10" CABLE RACK HOOK HEAVY DUTY	50	1	50
9600-14	14" CABLE RACK HOOK	25	1	40
9600-18	18" CABLE RACK HOOK	10	1	28



UNDERGROUND CABLE RACK

CABLE RACK WITH HOLE

PART#	DESCRIPTION	PKG QTY	CTN QTY	CTN WT.
9601-8	15" CABLE RACK WITH 8 'T' SLOTS	50	1	74
9601-14	24" CABLE RACK WITH 14 'T' SLOTS	10	1	20
9601-18	30" CABLE RACK WITH 18 'T' SLOTS	10	1	28
9601-37	55-1/4" CABLE RACK WITH 37 'T' SLOTS	1	1	6
9601-43	64-1/4" CABLE RACK WITH 43 'T' SLOTS	10	1	65
9601-47	70-1/4" CABLE RACK WITH 47 'T' SLOTS	1	1	7



Allied Bolt Products LLC

CABLE RACK SUPPORT
CABLE RACK SUPPORT

PART#	DESCRIPTION	PKG QTY	CTN QTY	CTN WT.
9610	3-5/8" X 4-1/4" X 2-1/4" CABLE RACK SUPPORT	25	1	57
9611	6-9/16" X 5-3/4" X 2-5/8" CABLE RACK SUPPORT	25	1	56



Allied Bolt Products LLC

CABLE RACK CLIP
CABLE RACK CLIP

PART#	DESCRIPTION	PKG QTY	CTN QTY	CTN WT.
9615	CABLE RACK CLIP	100	4	2

Service, Secondary, and Neutral Hardware



Allied Bolt Products LLC

SECONDARY RACK
SECONDARY RACK FOR INSULATORS

PART#	DESCRIPTION	PKG QTY	CTN QTY	CTN WT.
7620	SECONDARY RACK 18" FOR 2 INSULATORS	1	1	5
7623	SECONDARY RACK 26" FOR 3 INSULATORS	1	1	7
7624	SECONDARY RACK 34" FOR 4 INSULATORS	1	1	8



Allied Bolt Products LLC

SECONDARY RACK WITH INSULATORS

PART#	DESCRIPTION	PKG QTY	CTN QTY	CTN WT.
7621	SECONDARY RACK 18" WITH 2 INSULATORS	7	1	43
7622	SECONDARY RACK 26" FOR 3 INSULATORS	1	1	10
7625	SECONDARY RACK 34" WITH 4 INSULATORS	3	1	33



Allied Bolt Products LLC

SPOOL INSULATORS
SPOOL INSULATORS

PART#	DESCRIPTION	PKG QTY	CTN QTY	CTN WT.
4203	53-2 SPOOL INSULATOR	50	1	60
4205	53-3 SPOOL INSULATOR	12	1	14



Allied Bolt Products LLC

NYLON ALLOY SCREW TYPE WIREHOLDER

PART#	DESCRIPTION	PKG QTY	CTN QTY	CTN WT.
9320	2-1/4" NYLON ALLOY SCREW TYPE WIREHOLDER	25	1	7
9321	3" NYLON ALLOY SCREW TYPE WIREHOLDER	25	1	7
9322	4" NYLON ALLOY SCREW TYPE WIREHOLDER	25	1	7



REINFORCED WIRE HOLDER

REINFORCED WIRE HOLDER

PART#	DESCRIPTION	PKG QTY	CTN QTY	CTN WT.
9223	#22 x 2-1/4" REINFORCED WIRE HOLDER	25	1	14
9221	#22 x 3" REINFORCED WIRE HOLDER	25	1	15
9224	#22 x 4" REINFORCED WIRE HOLDER	25	1	18



PORCELAIN MAST MOUNTED WIREHOLDER

PORCELAIN MAST MOUNTED WIREHOLDER

PART#	DESCRIPTION	PKG QTY	CTN QTY	CTN WT.
9255	1-1/4" - 3" PORCELAIN MAST MOUNTED WIREHOLDER	20	1	30
9256	3" - 4" PORCELAIN MAST MOUNTED WIRE HOLDER	20	1	30



NYLON ALLOY MAST MOUNTED WIREHOLDER

NYLON ALLOY MAST MOUNTED WIREHOLDER

PART#	DESCRIPTION	PKG QTY	CTN QTY	CTN WT.
9254	1-1/4" TO 3" NYLON MAST MOUNTED WIREHOLDER	20	1	21
9253	3" to 4" NYLON WIREHOLDER FOR MAST	20	1	21



SERVICE DEAD-END BRACKET

PART#	DESCRIPTION	PKG QTY	CTN QTY	CTN WT.
5063	SERVICE DEAD-END BRACKET	25	1	24

Spool Clevises



SWINGING CLEVIS

INSULATED SWINGING CLEVIS W/O MOUNTING BRACKET

PART#	DESCRIPTION	PKG QTY	CTN QTY	CTN WT.
8478	2-1/4" INSULATED SWINGING CLEVIS W/O MOUNTING BRACKET	50	1	23



INSULATED SWINGING CLEVIS

PART#	DESCRIPTION	PKG QTY	CTN QTY	CTN WT.
8480	3-1/4" X 5" INSULATED SWINGING CLEVIS	10	1	16



Allied Bolt Products LLC

INSULATED SWINGING CLEVIS WITH MOUNTING BRACKET

PART#	DESCRIPTION	PKG QTY	CTN QTY	CTN WT.
8477	2-1/4" INSULATED SWINGING CLEVIS WITH MOUNTING BRACKET	20	1	18

CHANNEL BRACKET CLEVISES

CHANNEL CLEVIS WITH INSULATOR



Allied Bolt Products LLC

PART#	DESCRIPTION	PKG QTY	CTN QTY	CTN WT.
8475	CHANNEL BRACKET CLEVIS WITH ANSI 53-3 SPOOL INSULATOR	4	1	12
8476	CHANNEL BRACKET CLEVIS WITH ANSI 53-2 SPOOL INSULATOR	4	1	12

CHANNEL BRACKET CLEVIS WITHOUT INSULATOR

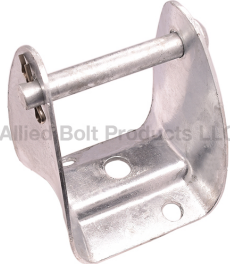


Allied Bolt Products LLC

PART#	DESCRIPTION	PKG QTY	CTN QTY	CTN WT.
8474	CHANNEL BRACKET CLEVIS WITHOUT SPOOL INSULATOR	10	1	18

INSULATOR CLEVIS

SPOOL INSULATOR CLEVIS



Allied Bolt Products LLC

PART#	DESCRIPTION	PKG QTY	CTN QTY	CTN WT.
8479	3-1/4" SPOOL INSULATOR CLEVIS	6	1	16

Lag Screws

DRIVE SCREW

SQUARE HEAD DRIVE SCREW REGULAR POINT



Allied Bolt Products LLC

PART#	DESCRIPTION	PKG QTY	CTN QTY	CTN WT.
372	1/4" X 2-1/2" SQUARE HEAD DRIVE SCREW REGULAR POINT	50	16	32
377	5/16" X 3" SQUARE HEAD DRIVE SCREW REGULAR POINT	50	8	26
530	3/8" X 2-1/2" SQUARE DRIVE SCREW REGULAR POINT	50	4	17
531	3/8" X 4" SQUARE HEAD DRIVE SCREW REGULAR POINT	50	4	26
532	1/2" X 4" SQUARE HEAD DRIVE SCREW REGULAR POINT	50	4	43

SQUARE HEAD FETTER DRIVE SCREW DRIVE POINT



Allied Bolt Products LLC

PART#	DESCRIPTION	PKG QTY	CTN QTY	CTN WT.
3760	3/8" X 3" SQUARE HEAD FETTER DRIVE SCREW DRIVE POINT	50	4	23
378	3/8" X 4" SQUARE HEAD FETTER DRIVE SCREW DRIVE POINT	50	4	26
37605	1/2" X 3" SQUARE HEAD FETTER DRIVE SCREW DRIVE POINT	50	4	33
529	1/2" X 4" SQUARE HEAD FETTER DRIVE SCREW DRIVE POINT	50	4	43
528	1/2" X 4-1/2" SQUARE HEAD DRIVE SCREW DRIVE POINT	50	4	47
7850	5/8" X 6" SQUARE HEAD FETTER DRIVE SCREW DRIVE POINT	50	1	30



Allied Bolt Products LLC

SQUARE HEAD TWIST DRIVE SCREW DRIVE POINT

PART#	DESCRIPTION	PKG QTY	CTN QTY	CTN WT.
5290	1/2" X 4" SQUARE HEAD TWIST DRIVE SCREW DRIVE POINT	50	4	43
379	1/2" X 4-1/2" SQUARE HEAD TWIST DRIVE SCREW DRIVE POINT	200	1	47
743	1/2" X 6-1/2" SQUARE HEAD TWIST DRIVE SCREW DRIVE POINT	100	1	37

COACH SCREW (SQUARE HEAD LAG SCREW)

COACH SCREW



Allied Bolt Products LLC

PART#	DESCRIPTION	PKG QTY	CTN QTY	CTN WT.
129	1/4" X 2" COACH SCREW	25	32	22
522	1/4" X 2" COACH SCREW	50	16	21
523	1/4" X 2-1/2" COACH SCREW	50	16	27
130	5/16" X 2-1/2" COACH SCREW	25	16	20
131	5/16" X 3" COACH SCREW	50	8	23

HEX LAG SCREW

1/4" HEX LAG SCREW



Allied Bolt Products LLC

PART#	DESCRIPTION	PKG QTY	CTN QTY	CTN WT.
932	1/4" X 1" HEX LAG SCREW	100	16	24
870	1/4" X 1-1/4" HEX LAG SCREW	100	16	28
85	1/4" X 1-1/2" HEX LAG SCREW	100	16	32
719	1/4" X 2" HEX LAG SCREW	100	8	20
933	1/4" X 2-1/2" HEX LAG SCREW	100	4	15
762	1/4" X 3" HEX LAG SCREW	100	4	15
765	1/4" X 3-1/2" HEX LAG SCREW	50	4	11
766	1/4" X 4" HEX LAG SCREW	50	4	8
776	1/4" X 4-1/2" HEX LAG SCREW	50	4	13
780	1/4" X 5" HEX LAG SCREW	50	4	15
781	1/4" X 6" HEX LAG SCREW	50	4	18

5/16" HEX LAG SCREW



Allied Bolt Products LLC

PART#	DESCRIPTION	PKG QTY	CTN QTY	CTN WT.
47	5/16" X 1-1/2" HEX LAG SCREW	100	8	26
768	5/16" X 2" HEX LAG SCREW	100	4	18
230	5/16" X 2-1/2" HEX LAG SCREW	50	8	20
783	5/16" X 3" HEX LAG SCREW	100	4	22
784	5/16" X 3-1/2" HEX LAG SCREW	50	4	17
785	5/16" X 4" HEX LAG SCREW	50	4	19
786	5/16" X 4-1/2" HEX LAG SCREW	50	4	11

3/8" HEX LAG SCREW



Allied Bolt Products LLC

PART#	DESCRIPTION	PKG QTY	CTN QTY	CTN WT.
2003	3/8" X 1" HEX LAG SCREW	50	8	36
579	3/8" X 1-1/2" HEX LAG SCREW	100	8	36
721	3/8" X 2" HEX LAG SCREW	100	4	26
170	3/8" X 2-1/2" HEX LAG SCREW	100	4	28
722	3/8" X 3" HEX LAG SCREW	100	4	36
792	3/8" X 3-1/2" HEX LAG SCREW	50	4	24
582	3/8" X 4" HEX LAG SCREW	50	4	25



1/2" HEX LAG SCREW

PART#	DESCRIPTION	PKG QTY	CTN QTY	CTN WT.
720	1/2" X 2" HEX LAG SCREW	100	4	46
796	1/2" X 2-1/2" HEX LAG SCREW	50	4	35
581	1/2" X 3" HEX LAG SCREW	50	4	41
797	1/2" X 3-1/2" HEX LAG SCREW	50	4	46
580	1/2" X 4" HEX LAG SCREW	50	4	44
584	1/2" X 4-1/2" HEX LAG SCREW	50	1	11
588	1/2" X 5" HEX LAG SCREW	50	4	63
589	1/2" X 6" HEX LAG SCREW	50	1	14



5/8" HEX LAG SCREW

PART#	DESCRIPTION	PKG QTY	CTN QTY	CTN WT.
1507	5/8" X 5" HEX LAG SCREW	25	4	42



HEX LAG SCREW DRIVE POINT WITH PERMASEAL WASHER

HEX LAG SCREW DRIVE POINT WITH PERMASEAL™ WASHER

PART#	DESCRIPTION	PKG QTY	CTN QTY	CTN WT.
7190DW	1/4" X 2" HEX LAG SCREW DRIVE POINT WITH PERMASEAL™ WASHER	1000	1	33
7191DW	1/4" X 2-1/2" HEX LAG SCREW DRIVE POINT WITH PERMASEAL™ WASHER	1000	1	35
7192DW	1/4" X 3" HEX LAG SCREW DRIVE POINT WITH PERMASEAL™ WASHER	1000	1	39



HEX HEAD DRIVE SCREW DRIVE POINT GALVANIZED

PART#	DESCRIPTION	PKG QTY	CTN QTY	CTN WT.
7220	3/8" x 3" HEX HEAD DRIVE SCREW DRIVE POINT GALVANIZED	40	4	31



HEX LAG SCREW W/ PERMASEAL™ WASHER

HEX LAG SCREW W/ PERMASEAL WASHER

PART#	DESCRIPTION	PKG QTY	CTN QTY	CTN WT.
7190	1/4" X 2" HEX LAG SCREW W/ PERMASEAL™ WASHER	1000	1	14
7191	1/4" X 2-1/2" HEX LAG SCREW W/ PERMASEAL™ WASHER	1000	1	18
7192	1/4" X 3" HEX LAG SCREW W/ PERMASEAL™ WASHER	1000	1	40
1710	1/4" X 4" HEX LAG SCREW W/ PERMASEAL™ WASHER	500	1	24

Pole Steps



DETACHABLE POLE STEP

DETACHABLE POLE STEP

PART#	DESCRIPTION	PKG QTY	CTN QTY	CTN WT.
844	DETACHABLE POLE STEP	50	1	31



SLIDE ON DETACHABLE POLE STEP

PART#	DESCRIPTION	PKG QTY	CTN QTY	CTN WT.
893	SLIDE ON DETACHABLE POLE STEP	50	1	25



SPIKE HEAD POLE STEP

SPIKE HEAD POLE STEP

PART#	DESCRIPTION	PKG QTY	CTN QTY	CTN WT.
5800	5/8" X 10" SPIKE HEAD POLE STEP	50	1	45
8650	3/4" X 14" SPIKE HEAD POLE STEP	30	1	55



FIBERGLASS POLE STEP

FIBERGLASS POLE STEP FOR POLE W/ ROUND WASHER

PART#	DESCRIPTION	PKG QTY	CTN QTY	CTN WT.
6512	FIBERGLASS POLE STEP FOR 8" POLE W/ ROUND WASHER	25	1	50
6507	FIBERGLASS POLE STEP FOR 10" POLE W/ ROUND WASHER	25	1	50



COMPOSITE UTILITY POLE MOUNT

COMPOSITE UTILITY POLE MOUNT

PART#	DESCRIPTION	PKG QTY	CTN QTY	CTN WT.
6508	COMPOSITE UTILITY POLE MOUNT FOR 10" POLE	25	1	39



WORKING POLE STEP

WORKING POLE STEP

PART#	DESCRIPTION	PKG QTY	CTN QTY	CTN WT.
6514	WORKING POLE STEP FOR 8" POLE	10	1	38
6506	WORKING POLE STEP FOR 10" POLE	10	1	38



TOWER POLE STEP

TOWER POLE STEP GRADE 8 WITH NUT GALVANIZED

PART#	DESCRIPTION	PKG QTY	CTN QTY	CTN WT.
12680	5/8"-11 X 8-1/2" TOWER POLE STEP GRADE 8 WITH NUT GALVANIZED	25	1	53
12682	3/4"-10 X 8-1/2" TOWER POLE STEP GRADE 8 WITH NUT GALVANIZED	25	1	54



MOUNT WITH LAG SCREW

MOUNT WITH LAG SCREW

PART#	DESCRIPTION	PKG QTY	CTN QTY	CTN WT.
843	MOUNT WITH LAG SCREW	50	1	31



POLE STEP MOUNT WITH STAINLESS STEEL BOLT

POLE STEP MOUNT WITH STAINLESS STEEL BOLT

PART#	DESCRIPTION	PKG QTY	CTN QTY	CTN WT.
9855	POLE STEP MOUNT WITH STAINLESS STEEL BOLT	50	1	24

Lock Washers



#316 STAINLESS DOUBLE COIL LOCK WASHER

#316 STAINLESS STEEL DOUBLE COIL LOCK WASHER

PART#	DESCRIPTION	PKG QTY	CTN QTY	CTN WT.
1108SS	5/8" #316 STAINLESS STEEL DOUBLE COIL LOCK WASHER	250	1	30
1109SS	3/4" #316 STAINLESS STEEL DOUBLE COIL LOCK WASHER	250	1	48



PREMIUM DOUBLE COIL LOCK WASHER

DOUBLE COIL LOCK WASHER PREMIUM

PART#	DESCRIPTION	PKG QTY	CTN QTY	CTN WT.
1106	3/8" DOUBLE COIL LOCK WASHER PREMIUM	250	4	12
1107	1/2" DOUBLE COIL LOCK WASHER PREMIUM	250	1	13
1108	5/8" DOUBLE COIL LOCK WASHER PREMIUM	250	1	30
1109	3/4" DOUBLE COIL LOCK WASHER PREMIUM	250	1	48
1120	7/8" DOUBLE COIL LOCK WASHER PREMIUM	250	1	53
1121	1" DOUBLE COIL LOCK WASHER PREMIUM	150	1	45



ECONOMY DOUBLE COIL LOCK WASHER

DOUBLE COIL LOCK WASHER ECONOMY

PART#	DESCRIPTION	PKG QTY	CTN QTY	CTN WT.
1186	3/8" DOUBLE COIL LOCK WASHER ECONOMY	100	16	33
1187	1/2" DOUBLE COIL LOCK WASHER ECONOMY	100	4	13
1192	5/8" DOUBLE COIL LOCK WASHER ECONOMY	100	4	29
1193	3/4" DOUBLE COIL LOCK WASHER ECONOMY	100	1	13



SPRING WASHER

SPRING WASHER

PART#	DESCRIPTION	PKG QTY	CTN QTY	CTN WT.
7012	1/2" SPRING WASHER	100	1	19
7013	5/8" SPRING WASHER	25	1	22
7014	3/4" SPRING WASHER	25	1	23
7016	7/8" SPRING WASHER	25	1	21
7020	1" SPRING WASHER	25	1	20



SPLIT LOCK WASHER

MEDIUM SPLIT LOCK WASHER

PART#	DESCRIPTION	PKG QTY	CTN QTY	CTN WT.
246	1/4" MEDIUM SPLIT LOCK WASHER	100	40	9
241	5/16" MEDIUM SPLIT LOCK WASHER	100	40	19
240	3/8" MEDIUM SPLIT LOCK WASHER	100	40	23
6100A	1/2" MEDIUM SPLIT LOCK WASHER	200	8	21
6100	1/2" MEDIUM SPLIT LOCK WASHER	100	16	21
6101A	5/8" MEDIUM SPLIT LOCK WASHER	200	4	22
6101	5/8" MEDIUM SPLIT LOCK WASHER	100	8	21
6102	3/4" MEDIUM SPLIT LOCK WASHER	100	8	32
6103	7/8" MEDIUM SPLIT LOCK WASHER	100	4	25
6109	1" MEDIUM SPLIT LOCK WASHER	100	4	36
61090	1-1/4" MEDIUM SPLIT LOCK WASHER	50	1	9

Washers



SQUARE WASHER

SQUARE WASHER FOR 1/2" BOLT

PART#	DESCRIPTION	PKG QTY	CTN QTY	CTN WT.
11502	1/8" X 2" SQUARE WASHER FOR 1/2" BOLT	100	4	48



SQUARE WASHER FOR 5/8" BOLT

PART#	DESCRIPTION	PKG QTY	CTN QTY	CTN WT.
11501	1/8" X 2" SQUARE WASHER FOR 5/8" BOLT	100	4	48
11500	3/16" X 2-1/4" SQUARE WASHER FOR 5/8" BOLT	100	2	48
11500SS	3/16" X 2-1/4" STAINLESS STEEL SQUARE WASHER FOR 5/8" BOLT	100	2	49
11559	1/4" X 3-1/2" SQUARE WASHER FOR 5/8" BOLT	50	1	58

SQUARE WASHER FOR 3/4" BOLT



PART#	DESCRIPTION	PKG QTY	CTN QTY	CTN WT.
11550	3/16" X 2-1/4" SQUARE WASHER FOR 3/4" BOLT	100	2	48
11550SS	3/16" X 2-1/4" STAINLESS STEEL SQUARE WASHER FOR 3/4" BOLT	100	2	44
11557	3/16" X 4" SQUARE WASHER FOR 3/4" BOLT	50	1	33
11551	1/4" X 3" SQUARE WASHER FOR 3/4" BOLT	100	1	57
11556	3/8" x 3-1/2" SQUARE WASHER FOR 3/4" BOLT	50	1	56

SQUARE WASHER FOR 7/8" BOLT



PART#	DESCRIPTION	PKG QTY	CTN QTY	CTN WT.
11549	1/4" x 4" SQUARE WASHER FOR 7/8" BOLT	50	1	44
11600	3/8" X 3-1/2" SQUARE WASHER FOR 7/8" BOLT	50	1	31

SQUARE WASHER FOR 1" BOLT



PART#	DESCRIPTION	PKG QTY	CTN QTY	CTN WT.
11700	3/8" X 6" SQUARE WASHER FOR 1" BOLT	15	1	58
11705	1/2" X 4" SQUARE WASHER FOR 1" BOLT	25	1	47

STAINLESS STEEL SQUARE WASHER



PART#	DESCRIPTION	PKG QTY	CTN QTY	CTN WT.
11500SS	3/16" X 2-1/4" STAINLESS STEEL SQUARE WASHER FOR 5/8" BOLT	100	2	49
11550SS	3/16" X 2-1/4" STAINLESS STEEL SQUARE WASHER FOR 3/4" BOLT	100	2	44

CURVED WASHER

5/8" CURVED WASHER



PART#	DESCRIPTION	PKG QTY	CTN QTY	CTN WT.
11552	CURVED WASHER 2-1/4" X 2-1/4" X 11/16" HOLE X 3/16" THICK	50	4	42
11555	CURVED WASHER 2-1/2" X 2-1/2" X 11/16" HOLE X 3/16" THICK	50	4	56
233	CURVED WASHER 3" X 3" X 11/16" HOLE X 1/4" THICK	50	2	65

3/4" CURVED WASHER



PART#	DESCRIPTION	PKG QTY	CTN QTY	CTN WT.
244	CURVED WASHER 3" X 3" X 13/16" HOLE X 1/4" THICK	50	2	54
231	CURVED WASHER 3-1/8" X 3-1/4" X 13/16" HOLE X 1/4" THICK	50	2	58
221	CURVED WASHER 4" X 4" X 13/16" HOLE X 1/4" THICK	50	1	42
220	CURVED WASHER 4" X 4" X 13/16" HOLE X 3/8" THICK	25	1	42

7/8" CURVED WASHER



PART#	DESCRIPTION	PKG QTY	CTN QTY	CTN WT.
238	CURVED WASHER 3-3/8" X 3-1/2" X 15/16" HOLE X 3/8" THICK	50	1	53
228	CURVED WASHER 4" X 4" X 15/16" HOLE X 1/4" THICK	50	1	59

1" CURVED WASHER



PART#	DESCRIPTION	PKG QTY	CTN QTY	CTN WT.
237	CURVED WASHER 3-3/8" X 3-1/2" X 1-1/8" HOLE X 3/8" THICK	50	1	53

USS ROUND WASHER GALVANIZED

USS ROUND WASHER GALVANIZED



PART#	DESCRIPTION	PKG QTY	CTN QTY	CTN WT.
11001	3/16" USS ROUND WASHER GALVANIZED (1/4" ID X 9/16" OD X 3/64" THICK)	100	40	18
653	1/4" USS ROUND WASHER GALVANIZED (5/16" ID X 3/4" OD X 1/16" THICK)	100	40	22
11002	5/16" USS ROUND WASHER GALVANIZED (3/8" ID X 7/8" OD X 5/64" THICK)	100	40	56
249	3/8" USS ROUND WASHER GALVANIZED (7/16" ID X 1" OD X 5/64" THICK)	100	32	56
249A	3/8" USS ROUND WASHER GALVANIZED (7/16" ID X 1" OD X 5/64" THICK)	250	8	35
104	1/2" USS ROUND WASHER GALVANIZED (9/16" ID X 1-3/8" OD X 7/64" THICK)	50	16	32
11003	5/8" USS ROUND WASHER GALVANIZED (3/4" ID X 1-3/4" OD X 9/64" THICK)	100	4	31
11003A	5/8" USS ROUND WASHER GALVANIZED (3/4" ID X 1-3/4" OD X 9/64" THICK)	500	1	29
7017	3/4" USS ROUND WASHER GALVANIZED (7/8" ID X 2" OD X 5/32" THICK)	100	4	39
7015	7/8" USS ROUND WASHER GALVANIZED (15/16" ID X 2-1/4" OD X 11/64" THICK)	50	4	31
7011	1" USS ROUND WASHER GALVANIZED (1-1/16" ID X 2-1/2" OD X 11/64" THICK)	50	4	10
976100	1-1/4" x 3" USS ROUND WASHER GALVANIZED (1-3/8" ID X 3" OD X 11/64" THICK)	50	1	14

3" DIAMETER WASHER

3" DIAMETER WASHER BOLT



PART#	DESCRIPTION	PKG QTY	CTN QTY	CTN WT.
12906	3" DIAMETER WASHER BOLT SIZE 1/2"	100	1	49
12907	3" DIAMETER WASHER BOLT SIZE 5/8"	100	1	48
12908	3" DIAMETER WASHER BOLT SIZE 3/4"	100	1	65
12909	3" DIAMETER WASHER BOLT SIZE 7/8"	100	1	47
12910	3" DIAMETER WASHER BOLT SIZE 1"	100	1	53

RECTANGULAR CURVED CASTED WASHER

RECTANGULAR CURVED CASTED WASHER



PART#	DESCRIPTION	PKG QTY	CTN QTY	CTN WT.
2880	2-1/4" X 3-1/2" RECTANGULAR CURVED CASTED WASHER FOR 3/4" BOLT	50	1	30
2881	3" X 4" RECTANGULAR CURVED CASTED WASHER FOR 7/8" BOLT	50	1	47
2882	3" X 4" RECTANGULAR CURVED CASTED WASHER FOR 1" BOLT	50	1	48



SQUARE BEVELED WASHER

SQUARE BEVELED WASHER

PART#	DESCRIPTION	PKG QTY	CTN QTY	CTN WT.
28895	1/2" SQUARE BEVELED WASHER	100	1	26
15901	5/8" SQUARE BEVELED WASHER	100	1	29
15902	3/4" SQUARE BEVELED WASHER	100	1	29



ROUND FLAT CASTED WASHER

ROUND FLAT CASTED WASHER

PART#	DESCRIPTION	PKG QTY	CTN QTY	CTN WT.
2890	3" ROUND FLAT CASTED WASHER FOR 3/4" BOLTS	100	1	45
2891	4" ROUND FLAT CASTED WASHER FOR 7/8" BOLTS	50	1	40
2892	4" ROUND FLAT CASTED WASHER FOR 1" BOLTS	50	1	40



SQUARE CURVED CASTED WASHER

SQUARE CURVED CASTED WASHER

PART#	DESCRIPTION	PKG QTY	CTN QTY	CTN WT.
2870	2-1/4" SQUARE CURVED CASTED WASHER FOR 5/8" BOLTS	200	1	60
2871	3" SQUARE CURVED CASTED WASHER FOR 5/8" BOLTS	100	1	58
2872	3" SQUARE CURVED CASTED WASHER FOR 3/4" BOLTS	100	1	56
2873	4" SQUARE CURVED CASTED WASHER FOR 3/4" BOLTS	40	1	48
2874	4" SQUARE CURVED CASTED WASHER FOR 7/8" BOLTS	40	1	47
2875	4" SQUARE CURVED CASTED WASHER FOR 1" BOLTS	40	1	47

Canadian CSA Bolts



DOUBLE ARMING BOLT CSA STANDARD

5/8" DOUBLE ARMING BOLT CSA STANDARD

PART#	DESCRIPTION	PKG QTY	CTN QTY	CTN WT.
25605	5/8"X10" DOUBLE ARMING BOLT CSA STANDARD	40	1	48
25606	5/8"X12" DOUBLE ARMING BOLT CSA STANDARD	40	1	50
25607	5/8"X14" DOUBLE ARMING BOLT CSA STANDARD	35	1	52
25608	5/8"X16" DOUBLE ARMING BOLT CSA STANDARD	30	1	49
25609	5/8"X18" DOUBLE ARMING BOLT CSA STANDARD	15	1	26
25610	5/8"X20" DOUBLE ARMING BOLT CSA STANDARD	15	1	34
25611	5/8"X22" DOUBLE ARMING BOLT CSA STANDARD	15	1	36
25612	5/8"X24" DOUBLE ARMING BOLT CSA STANDARD	15	1	37
25613	5/8"X26" DOUBLE ARMING BOLT CSA STANDARD	15	1	36
25614	5/8"X28" DOUBLE ARMING BOLT CSA STANDARD	15	1	39
25615	5/8"X30" DOUBLE ARMING BOLT CSA STANDARD	15	1	40
25616	5/8"X32" DOUBLE ARMING BOLT CSA STANDARD	10	1	28



Allied Bolt Products LLC

3/4" DOUBLE ARMING BOLT CSA STANDARD

PART#	DESCRIPTION	PKG QTY	CTN QTY	CTN WT.
25617	3/4"X12" DOUBLE ARMING BOLT CSA STANDARD	20	1	39
25619	3/4"X16" DOUBLE ARMING BOLT CSA STANDARD	20	1	48
25620	3/4"X18" DOUBLE ARMING BOLT CSA STANDARD	20	1	50
25621	3/4"X20" DOUBLE ARMING BOLT CSA STANDARD	20	1	56
25622	3/4"X22" DOUBLE ARMING BOLT CSA STANDARD	10	1	32
25623	3/4"X24" DOUBLE ARMING BOLT CSA STANDARD	10	1	32
25624	3/4"X26" DOUBLE ARMING BOLT CSA STANDARD	10	1	35
25625	3/4"X28" DOUBLE ARMING BOLT CSA STANDARD	10	1	37
25626	3/4"X30" DOUBLE ARMING BOLT CSA STANDARD	10	1	38



Allied Bolt Products LLC

OVAL EYEBOLT CSA STANDARD
5/8" OVAL EYEBOLT CSA STANDARD

PART#	DESCRIPTION	PKG QTY	CTN QTY	CTN WT.
45501	5/8" X 6" OVAL EYEBOLT CSA STANDARD	40	1	44
45502	5/8" X 8" OVAL EYEBOLT CSA STANDARD	50	1	64
45503	5/8" X 9" OVAL EYEBOLT CSA STANDARD	40	1	50
45504	5/8" X 10" OVAL EYEBOLT CSA STANDARD	35	1	50
45505	5/8" X 12" OVAL EYEBOLT CSA STANDARD	35	1	54
45506	5/8" X 14" OVAL EYEBOLT CSA STANDARD	20	1	36
45507	5/8" X 16" OVAL EYEBOLT CSA STANDARD	35	1	64
45508	5/8" X 18" OVAL EYEBOLT CSA STANDARD	25	1	50
45509	5/8" X 20" OVAL EYEBOLT CSA STANDARD	25	1	55
45510	5/8" X 22" OVAL EYEBOLT CSA STANDARD	20	1	45
45511	5/8" X 24" OVAL EYEBOLT CSA STANDARD	20	1	49



Allied Bolt Products LLC

3/4" OVAL EYEBOLT CSA STANDARD

PART#	DESCRIPTION	PKG QTY	CTN QTY	CTN WT.
45512	3/4" X 12" OVAL EYEBOLT CSA STANDARD	25	1	64
45513	3/4" X 14" OVAL EYEBOLT CSA STANDARD	25	1	66
45514	3/4" X 16" OVAL EYEBOLT CSA STANDARD	25	1	65
45515	3/4" X 18" OVAL EYEBOLT CSA STANDARD	25	1	77
45516	3/4" X 20" OVAL EYEBOLT CSA STANDARD	10	1	36
45517	3/4" X 22" OVAL EYEBOLT CSA STANDARD	10	1	40
45518	3/4" X 24" OVAL EYEBOLT CSA STANDARD	10	1	44
45519	3/4" X 26" OVAL EYEBOLT CSA STANDARD	10	1	48



Allied Bolt Products LLC

SQUARE HEAD MACHINE BOLT WITH NUT- CSA STD
1/2" SQUARE HEAD MACHINE BOLT WITH NUT- CSA STD

PART#	DESCRIPTION	PKG QTY	CTN QTY	CTN WT.
45001	1/2"X1-1/2" SQUARE HEAD MACHINE BOLT WITH NUT- CSA STD	100	1	20
45002	1/2"X3" SQUARE HEAD MACHINE BOLT WITH NUT- CSA STD	100	1	25
45003	1/2"X4-1/2" SQUARE HEAD MACHINE BOLT WITH NUT- CSA STD	100	1	34
45004	1/2"X5-1/2" SQUARE HEAD MACHINE BOLT WITH NUT- CSA STD	100	1	36
45005	1/2"X6" SQUARE HEAD MACHINE BOLT WITH NUT- CSA STD	50	1	20
45006	1/2"X7" SQUARE HEAD MACHINE BOLT WITH NUT- CSA STD	100	1	45
45007	1/2"X8" SQUARE HEAD MACHINE BOLT WITH NUT- CSA STD	50	1	24
45008	1/2"X9" SQUARE HEAD MACHINE BOLT WITH NUT- CSA STD	75	1	42
45009	1/2"X10" SQUARE HEAD MACHINE BOLT WITH NUT- CSA STD	50	1	30
45010	1/2"X12" SQUARE HEAD MACHINE BOLT WITH NUT- CSA STD	25	1	12
45011	1/2"X14" SQUARE HEAD MACHINE BOLT WITH NUT- CSA STD	25	1	20



Allied Bolt Products LLC

5/8" SQUARE HEAD MACHINE BOLT WITH NUT- CSA STD

PART#	DESCRIPTION	PKG QTY	CTN QTY	CTN WT.
45082	5/8" X 2" SQUARE HEAD MACHINE BOLT WITH NUT- CSA STD	50	1	0
45084	5/8" X 3" SQUARE HEAD MACHINE BOLT WITH NUT- CSA STD	50	1	0
45085	5/8" X 4" SQUARE HEAD MACHINE BOLT WITH NUT- CSA STD	50	1	0
45012	5/8"X5" SQUARE HEAD MACHINE BOLT WITH NUT- CSA STD	20	1	12
45013	5/8"X6" SQUARE HEAD MACHINE BOLT WITH NUT- CSA STD	50	1	33
45014	5/8"X7" SQUARE HEAD MACHINE BOLT WITH NUT- CSA STD	50	1	37
45015	5/8"X8" SQUARE HEAD MACHINE BOLT WITH NUT- CSA STD	50	1	41
45016	5/8"X9" SQUARE HEAD MACHINE BOLT WITH NUT- CSA STD	50	1	45
45017	5/8"X10" SQUARE HEAD MACHINE BOLT WITH NUT- CSA STD	40	1	38
45018	5/8"X12" SQUARE HEAD MACHINE BOLT WITH NUT- CSA STD	30	1	34
45019	5/8"X14" SQUARE HEAD MACHINE BOLT WITH NUT- CSA STD	30	1	39
45020	5/8"X16" SQUARE HEAD MACHINE BOLT WITH NUT- CSA STD	25	1	35
45021	5/8"X18" SQUARE HEAD MACHINE BOLT WITH NUT- CSA STD	25	1	40
45022	5/8"X20" SQUARE HEAD MACHINE BOLT WITH NUT- CSA STD	20	1	34
45023	5/8"X22" SQUARE HEAD MACHINE BOLT WITH NUT- CSA STD	20	1	36
45024	5/8"X24" SQUARE HEAD MACHINE BOLT WITH NUT- CSA STD	20	1	38
45025	5/8"X26" SQUARE HEAD MACHINE BOLT WITH NUT- CSA STD	15	1	33
45026	5/8"X28" SQUARE HEAD MACHINE BOLT WITH NUT- CSA STD	20	1	45



Allied Bolt Products LLC

3/4" SQUARE HEAD MACHINE BOLT WITH NUT- CSA STD

PART#	DESCRIPTION	PKG QTY	CTN QTY	CTN WT.
45027	3/4"X2" SQUARE HEAD MACHINE BOLT WITH NUT- CSA STD	50	1	57
45028	3/4"X2-1/2" SQUARE HEAD MACHINE BOLT WITH NUT- CSA STD	50	1	60
46002	3/4" X 3" SQUARE HEAD MACHINE BOLT WITH NUT- CSA STD	50	1	0
45029	3/4"X6" SQUARE HEAD MACHINE BOLT WITH NUT- CSA STD	50	1	50
45030	3/4"X7" SQUARE HEAD MACHINE BOLT WITH NUT- CSA STD	50	1	53
45031	3/4" X 8" SQUARE HEAD MACHINE BOLT WITH NUT- CSA STD	25	1	30
45032	3/4"X10" SQUARE HEAD MACHINE BOLT WITH NUT- CSA STD	25	1	36
45033	3/4"X12" SQUARE HEAD MACHINE BOLT WITH NUT- CSA STD	25	1	43
45034	3/4"X14" SQUARE HEAD MACHINE BOLT WITH NUT- CSA STD	20	1	39
45035	3/4"X16" SQUARE HEAD MACHINE BOLT WITH NUT- CSA STD	15	1	31
45036	3/4"X18" SQUARE HEAD MACHINE BOLT WITH NUT- CSA STD	15	1	36
45037	3/4"X20" SQUARE HEAD MACHINE BOLT WITH NUT- CSA STD	15	1	38
45038	3/4"X22" SQUARE HEAD MACHINE BOLT WITH NUT- CSA STD	15	1	42
45039	3/4"X24" SQUARE HEAD MACHINE BOLT WITH NUT- CSA STD	15	1	45
45040	3/4"X26" SQUARE HEAD MACHINE BOLT WITH NUT- CSA STD	10	1	31
45041	3/4"X28" SQUARE HEAD MACHINE BOLT WITH NUT- CSA STD	10	1	35
45042	3/4" X 30" SQUARE HEAD MACHINE BOLT WITH NUT- CSA STD	10	1	0



Poleline Hardware Catalog

September 23, 2024



Allied Bolt Products LLC

7/8" SQUARE HEAD MACHINE BOLT WITH NUT- CSA STD

PART#	DESCRIPTION	PKG QTY	CTN QTY	CTN WT.
45050	7/8" X 12" SQUARE HEAD MACHINE BOLT WITH NUT- CSA STD	10	1	0
45051	7/8" X 14" SQUARE HEAD MACHINE BOLT WITH NUT- CSA STD	10	1	0
45052	7/8" X 16" SQUARE HEAD MACHINE BOLT WITH NUT- CSA STD	10	1	0
45053	7/8" X 18" SQUARE HEAD MACHINE BOLT WITH NUT- CSA STD	10	1	0
45054	7/8" X 20" SQUARE HEAD MACHINE BOLT WITH NUT- CSA STD	10	1	0
45055	7/8" X 22" SQUARE HEAD MACHINE BOLT WITH NUT- CSA STD	10	1	0
45056	7/8" X 24" SQUARE HEAD MACHINE BOLT WITH NUT- CSA STD	10	1	0
45057	7/8" X 26" SQUARE HEAD MACHINE BOLT WITH NUT- CSA STD	5	1	0
45058	7/8" X 28" SQUARE HEAD MACHINE BOLT WITH NUT- CSA STD	5	1	0
45059	7/8" X 30" SQUARE HEAD MACHINE BOLT WITH NUT- CSA STD	5	1	0
45060	7/8" X 32" SQUARE HEAD MACHINE BOLT WITH NUT- CSA STD	5	1	0
45061	7/8" X 34" SQUARE HEAD MACHINE BOLT WITH NUT- CSA STD	5	1	0
45062	7/8" X 36" SQUARE HEAD MACHINE BOLT WITH NUT- CSA STD	5	1	0
45063	7/8" X 38" SQUARE HEAD MACHINE BOLT WITH NUT- CSA STD	5	1	0
45064	7/8" X 40" SQUARE HEAD MACHINE BOLT WITH NUT- CSA STD	5	1	0
45065	7/8" X 42" SQUARE HEAD MACHINE BOLT WITH NUT- CSA STD	5	1	0



Allied Bolt Products LLC

1" SQUARE HEAD MACHINE BOLT WITH NUT- CSA STD

PART#	DESCRIPTION	PKG QTY	CTN QTY	CTN WT.
25680	1" X 12" SQUARE HEAD MACHINE BOLT WITH NUT- CSA STD	15	1	0

Thermal Diffusion Galvanizing



Allied Bolt Products LLC

SQUARE HEAD MACHINE BOLT WITH NUT - TDG

1/2" SQUARE HEAD MACHINE BOLT WITH NUT - TDG

PART#	DESCRIPTION	PKG QTY	CTN QTY	CTN WT.
71207	1/2" X 7" SQUARE HEAD MACHINE BOLT WITH NUT - TDG	50	1	0



Allied Bolt Products LLC

5/8" SQUARE HEAD MACHINE BOLT WITH NUT - TDG

PART#	DESCRIPTION	PKG QTY	CTN QTY	CTN WT.
75810	5/8" X 10" SQUARE HEAD MACHINE BOLT WITH NUT - TDG	50	1	53
75812	5/8" X 12" SQUARE HEAD MACHINE BOLT WITH NUT - TDG	50	1	56
75814	5/8" X 14" SQUARE HEAD MACHINE BOLT WITH NUT - TDG	50	1	64



Allied Bolt Products LLC

3/4" SQUARE HEAD MACHINE BOLT WITH NUT - TDG

PART#	DESCRIPTION	PKG QTY	CTN QTY	CTN WT.
73408	3/4" X 8" SQUARE HEAD MACHINE BOLT WITH NUT - TDG	40	1	48
73412	3/4" X 12" SQUARE HEAD MACHINE BOLT WITH NUT - TDG	25	1	43
73420	3/4" X 20" SQUARE HEAD MACHINE BOLT WITH NUT - TDG	25	1	63

Conduit Standoff Brackets

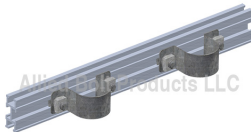
CONDUIT STRAP AND EXTRUSION KITS

CONDUIT STRAP AND EXTRUSION KITS



PART#	DESCRIPTION	PKG QTY	CTN QTY	CTN WT.
2866	2" CONDUIT STRAP AND EXTRUSION KIT	10	1	15
2867	2.5" CONDUIT STRAP AND EXTRUSION KIT	10	1	21
2868	4" CONDUIT STRAP AND EXTRUSION KIT	10	1	22
2869	5" CONDUIT STRAP AND EXTRUSION KIT	10	1	23
2840	6" CONDUIT STRAP AND EXTRUSION KIT	10	1	24

EXTRUSION WITH MULTIPLE CONDUIT STRAPS KIT



PART#	DESCRIPTION	PKG QTY	CTN QTY	CTN WT.
2841	2 X 2.5" CONDUIT STRAPS AND EXTRUSION KIT	5	1	21

CONDUIT STRAP AND HARDWARE KIT

CONDUIT STRAP AND HARDWARE KIT



PART#	DESCRIPTION	PKG QTY	CTN QTY	CTN WT.
2859	2" CONDUIT STRAP AND HARDWARE KIT	40	1	28
2862	2.5" CONDUIT STRAP AND HARDWARE KIT	40	1	30
2863	4" CONDUIT STRAP AND HARDWARE KIT	15	1	15
2864	5" CONDUIT STRAP AND HARDWARE KIT	20	1	21
2865	6" CONDUIT STRAP AND HARDWARE KIT	15	1	18

OFFSET BRACKET

OFFSET BRACKET



PART#	DESCRIPTION	PKG QTY	CTN QTY	CTN WT.
2813	OFFSET BRACKET	16	1	49

WIDE OFFSET BRACKET



PART#	DESCRIPTION	PKG QTY	CTN QTY	CTN WT.
2812	WIDE OFFSET BRACKET	8	1	47

STANDOFF BRACKET AND EXTRUSION KIT

STANDOFF BRACKET AND EXTRUSION KIT



PART#	DESCRIPTION	PKG QTY	CTN QTY	CTN WT.
2855	STANDOFF BRACKET AND 6" EXTRUSION KIT	5	1	21



WIDE STANDOFF BRACKET AND EXTRUSION KIT

PART#	DESCRIPTION	PKG QTY	CTN QTY	CTN WT.
2856	WIDE STANDOFF BRACKET AND 12" EXTRUSION KIT	6	1	44
2857	WIDE STANDOFF BRACKET AND 24" EXTRUSION KIT	5	1	43
2858	WIDE STANDOFF BRACKET AND 36" EXTRUSION KIT	5	1	49

T-SLOT EXTRUSION

T-SLOT EXTRUSION



PART#	DESCRIPTION	PKG QTY	CTN QTY	CTN WT.
2830	6" T-SLOT EXTRUSION	50	1	35
2831	12" T-SLOT EXTRUSION	25	1	35
2832	24" T-SLOT EXTRUSION	20	1	49
2833	36" T-SLOT EXTRUSION	8	1	30

CONDUIT STRAP

CONDUIT STRAP



PART#	DESCRIPTION	PKG QTY	CTN QTY	CTN WT.
2814	2" CONDUIT STRAP	25	1	8
2815	2.5" CONDUIT STRAP	25	1	9
2816	4" CONDUIT STRAP	25	1	13
2817	5" CONDUIT STRAP	25	1	16
2818	6" CONDUIT STRAP	20	1	15

CONDUIT STANDOFF BRACKET HARDWARE KIT

CONDUIT STANDOFF BRACKET HARDWARE KIT



PART#	DESCRIPTION	PKG QTY	CTN QTY	CTN WT.
2811	CONDUIT STANDOFF BRACKET HDW KIT	3	100	5

CONDUIT STANDOFF BRACKET KIT

CONDUIT STANDOFF BRACKET KIT



PART#	DESCRIPTION	PKG QTY	CTN QTY	CTN WT.
2850	2" CONDUIT STANDOFF BRACKET KIT	1	1	5
2851	2.5" CONDUIT STANDOFF BRACKET KIT	1	1	6
2852	4" CONDUIT STANDOFF BRACKET KIT	1	1	7
2853	5" CONDUIT STANDOFF BRACKET KIT	1	1	7
2854	6" CONDUIT STANDOFF BRACKET KIT	1	1	7