

**Bonding Connectors**

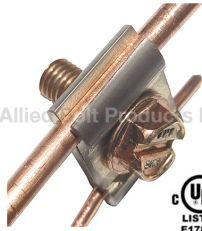


Allied Bolt Products LLC

**ALUMINUM TAP CLAMP**

**ALUMINUM TAP CLAMP**

PART#	DESCRIPTION	PKG QTY	CTN QTY	CTN WT.
897	ALUMINUM TAP CLAMP	50	1	8



Allied Bolt Products LLC

**PARALLEL GROOVE BONDING CONNECTOR**

PART#	DESCRIPTION	PKG QTY	CTN QTY	CTN WT.
1885	PARALLEL GROOVE BONDING CONNECTOR	50	16	58

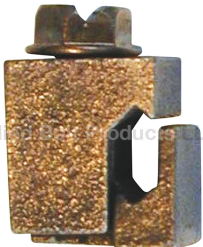


Allied Bolt Products LLC

**BRONZE VISE COMPRESSION CONNECTOR**

**BRONZE VISE CONNECTOR**

PART#	DESCRIPTION	PKG QTY	CTN QTY	CTN WT.
862	#6 AWG BRONZE VISE CONNECTOR	50	8	36
868	#4 AWG BRONZE VISE CONNECTOR	25	8	41
869	#2 AWG BRONZE VISE CONNECTOR	25	8	36
871	2/0 BRONZE VISE CONNECTOR	25	1	16
874	4/0 BRONZE VISE CONNECTOR	25	1	13



Allied Bolt Products LLC

**H Connector**

**H GROUND CONNECTOR**

PART#	DESCRIPTION	PKG QTY	CTN QTY	CTN WT.
879	H1 GROUND CONNECTOR	5	100	33
880	H2 GROUND CONNECTOR	5	50	27



Allied Bolt Products LLC

**Bronze Vise Connector Spacer Type**

**BRONZE VISE COMPRESSION CONNECTOR**

PART#	DESCRIPTION	PKG QTY	CTN QTY	CTN WT.
878	BRONZE VISE CONNECTOR SPACER TYPE	50	1	12



Allied Bolt Products LLC

**COPPER SPLIT BOLT**

**COPPER SPLIT BOLT**

PART#	DESCRIPTION	PKG QTY	CTN QTY	CTN WT.
852	S-2 COPPER SPLIT BOLT	100	4	46
853	S-4 COPPER SPLIT BOLT	100	4	28
854	S-6 COPPER SPLIT BOLT	100	4	20
855	S-8 COPPER SPLIT BOLT	100	4	13



SINGLE GROUND CONNECTOR



PART#	DESCRIPTION	PKG QTY	CTN QTY	CTN WT.
4200	SINGLE GROUND CONNECTOR	100	4	17

B STRAND GROUND CLAMP

B STRAND GROUND CLAMP



PART#	DESCRIPTION	PKG QTY	CTN QTY	CTN WT.
846	B STRAND GROUND CLAMP	25	4	52

Type C Ground Connector FOR MESSENGER CABLE



PART#	DESCRIPTION	PKG QTY	CTN QTY	CTN WT.
1025	TYPE C GROUND CONNECTOR FOR MESSENGER CABLE	50	4	44



KUL Bonding Clamp

KUL BRONZE BONDING CLAMP



PART#	DESCRIPTION	PKG QTY	CTN QTY	CTN WT.
2125	KUL BRONZE BONDING CLAMP	100	1	14



K1 BRONZE BONDING CLAMP



PART#	DESCRIPTION	PKG QTY	CTN QTY	CTN WT.
2125K1	K1 BRONZE BONDING CLAMP	100	1	14

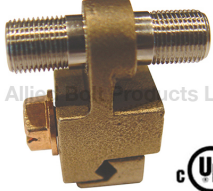
K2 BRONZE BONDING CLAMP



PART#	DESCRIPTION	PKG QTY	CTN QTY	CTN WT.
2125K2	K2 BRONZE BONDING CLAMP	100	1	14

Ground Blocks

**COAXIAL BONDING CONNECTOR**



Allied Bolt Products LLC



PART#	DESCRIPTION	PKG QTY	CTN QTY	CTN WT.
2546	COAXIAL BONDING CONNECTOR TO POWER GROUND	50	4	25

**SINGLE GROUND BLOCK**

**SINGLE GROUND BLOCK**



Allied Bolt Products LLC



PART#	DESCRIPTION	PKG QTY	CTN QTY	CTN WT.
AB1M	SINGLE GROUND BLOCK MECHANICALLY GALVANIZED	100	1	10
AB-S1	SINGLE GROUND BLOCK STAINLESS STEEL	100	1	9

**DUAL GROUND BLOCK**

**DUAL GROUND BLOCK GALV.**



Allied Bolt Products LLC



PART#	DESCRIPTION	PKG QTY	CTN QTY	CTN WT.
AB2MGH	DUAL GROUND BLOCK GALV. W. 1 SPLICE, 1 GROUND ATTACHMENT & 2 MOUNTING SCREWS	50	1	8
AB22MGH	DUAL GROUND BLOCK GALV. W. 2 SPLICES, 1 GROUND ATTACHMENT & 2 MOUNTING SCREWS	50	1	8

**DUAL GROUND BLOCK STAINLESS STEEL**



Allied Bolt Products LLC



PART#	DESCRIPTION	PKG QTY	CTN QTY	CTN WT.
AB2SGH	DUAL GROUND BLOCK STAINLESS STEEL W. 1 SPLICE, 1 GROUND ATTACHMENT & 2 MOUNTING SCREWS	50	1	7
AB22SGH	DUAL GROUND BLOCK STAINLESS STEEL W. 2 SPLICES, 1 GROUND ATTACHMENT & 2 MOUNTING SCREWS	50	1	8

**SPLITTER NUT**

**SPLITTER RING NUT**



Allied Bolt Products LLC

PART#	DESCRIPTION	PKG QTY	CTN QTY	CTN WT.
9010	3/8-32 X .172" SPLITTER NUT	100	80	24

**Ground Rods & Clamps**



Allied Bolt Products LLC

**COPPER BONDED GROUND ROD**

**1/2" COPPER BONDED GROUND ROD**

PART#	DESCRIPTION	PKG QTY	CTN QTY	CTN WT.
2134	1/2" X 8' COPPER BONDED GROUND ROD	10	10	460



**5/8" COPPER BONDED GROUND ROD**

PART#	DESCRIPTION	PKG QTY	CTN QTY	CTN WT.
2121	5/8" X 5' COPPER BONDED GROUND ROD	10	1	51
2136	5/8" X 6' COPPER BONDED GROUND ROD	10	1	61
2137	5/8" X 8' COPPER BONDED GROUND ROD	10	1	81



**HOT DIPPED GALVANIZED GROUND ROD**

**GALVANIZED GROUND ROD**

PART#	DESCRIPTION	PKG QTY	CTN QTY	CTN WT.
2109	3/8" x 5' GALVANIZED GROUND ROD	100	1	175
2110	3/8" X 6' GALVANIZED GROUND ROD	100	10	2280
2101	1/2" X 5' GALVANIZED GROUND ROD	100	10	290
2114	1/2" X 8' GALVANIZED GROUND ROD	100	10	453
2102	5/8" X 5' GALVANIZED GROUND ROD	100	10	521
2116	5/8" X 6' GALVANIZED GROUND ROD	100	10	523
2117	5/8" X 8' GALVANIZED GROUND ROD	10	1	80



**GROUND ROD COUPLING**

**GROUND ROD COUPLING**

PART#	DESCRIPTION	PKG QTY	CTN QTY	CTN WT.
875	1/2" GROUND ROD COUPLING	100	4	32
876	5/8" GROUND ROD COUPLING	25	4	22
877	3/4" GROUND ROD COUPLING	100	1	28



**PREMIUM GROUND ROD CLAMP**

**PREMIUM GROUND ROD CLAMP**

PART#	DESCRIPTION	PKG QTY	CTN QTY	CTN WT.
2140	3/8" PREMIUM BRONZE GROUND ROD CLAMP	100	4	30
2141	1/2" PREMIUM BRONZE GROUND ROD CLAMP	100	4	35
2142	5/8" PREMIUM BRONZE GROUND ROD CLAMP	100	4	39
2182	3/4" PREMIUM BRONZE GROUND ROD CLAMP	100	1	14



**ECONOMY GROUND ROD CLAMP**

**ECONOMY GROUND ROD CLAMP**

PART#	DESCRIPTION	PKG QTY	CTN QTY	CTN WT.
2190	3/8" ECONOMY GROUND ROD CLAMP	100	4	30
2191	1/2" ECONOMY GROUND ROD CLAMP	100	4	35
2192	5/8" ECONOMY GROUND ROD CLAMP	100	4	39
2193	3/4" ECONOMY GROUND ROD CLAMP	100	1	14



**HEAVY DUTY GROUND ROD CLAMP**

**HEAVY DUTY GROUND ROD CLAMP**

PART#	DESCRIPTION	PKG QTY	CTN QTY	CTN WT.
2196	5/8" Heavy Duty Ground Rod Clamp	25	4	45

**Meter Box Clamps**

**SIDE MOUNT METER BOX CLAMPS**

**SIDE MOUNT METER BOX CLAMPS**



PART#	DESCRIPTION	PKG QTY	CTN QTY	CTN WT.
3325	METER BOX CLAMP WITH ONE GROUND ATTACHMENT	100	1	16
3329	METER BOX CLAMP WIDE LIP WITH ONE GROUND ATTACHMENT	100	1	19

**CORNER BONDING CONNECTOR**



PART#	DESCRIPTION	PKG QTY	CTN QTY	CTN WT.
856	CORNER BONDING CONNECTOR FOR METER BOX	100	1	10

**PLATE STYLE METER BOX CONNECTOR**



PART#	DESCRIPTION	PKG QTY	CTN QTY	CTN WT.
3301	PLATE STYLE METER BOX CONNECTOR	50	1	5

**BRACKET STYLE METER BOX GROUNDING CLAMP**

**METER BOX GROUNDING CLAMP**



PART#	DESCRIPTION	PKG QTY	CTN QTY	CTN WT.
3305	SHORT (7" to 10-1/4") METER BOX GROUNDING CLAMP	50	1	31
3306	LONG (10-1/2" to 15-1/4") METER BOX GROUNDING CLAMP	50	1	38
3307	EXTRA LONG (14" to 22") METER BOX GROUNDING CLAMP	25	1	20
3308	EXTENDED (22" to 30") METER BOX GROUNDING CLAMP	25	1	25

**Bonding Clips and Ground Wire Fastening**

**B GROUND WIRE CLAMP**



PART#	DESCRIPTION	PKG QTY	CTN QTY	CTN WT.
9050	B GROUND WIRE CLAMP	500	32	32



**BONDING CLIP**

**BONDING CLIP**

PART#	DESCRIPTION	PKG QTY	CTN QTY	CTN WT.
1213	5/8" BONDING CLIP	500	1	50
1214	3/4" BONDING CLIP	250	1	35
1215	7/8" BONDING CLIP	250	1	50
1216	1" BONDING CLIP	150	1	40



**GROUND WIRE NAIL**

**GROUND WIRE NAIL**

PART#	DESCRIPTION	PKG QTY	CTN QTY	CTN WT.
739	7/8" GROUND WIRE NAIL (1LB PK)	1	32	33
740	1-3/8" GROUND WIRE NAIL (1LB PK)	1	32	33

**Ground Straps**



**PREMIUM GROUND STRAP**

**COPPER GROUND STRAP PREMIUM**

PART#	DESCRIPTION	PKG QTY	CTN QTY	CTN WT.
6AB	6" COPPER GROUND STRAP PREMIUM	400	1	38
9AB	9" COPPER GROUND STRAP PREMIUM	400	1	41
12AB	12" COPPER GROUND STRAP PREMIUM	200	1	24



**GALVANIZED GROUND STRAP PREMIUM**

PART#	DESCRIPTION	PKG QTY	CTN QTY	CTN WT.
6GAB	6" GALVANIZED GROUND STRAP PREMIUM	400	1	35
9GAB	9" GALVANIZED GROUND STRAP PREMIUM	400	1	40
12GAB	12" GALVANIZED GROUND STRAP PREMIUM	200	1	22
24GAB	24" GALVANIZED GROUNDING STRAP PREMIUM	200	1	26



**ECONOMY GROUND STRAP**

**COPPER GROUND STRAP ECONOMY**

PART#	DESCRIPTION	PKG QTY	CTN QTY	CTN WT.
2160	6" COPPER GROUND STRAP ECONOMY	500	1	20
2161	9" COPPER GROUND STRAP ECONOMY	500	1	27
2162	12" COPPER GROUND STRAP ECONOMY	500	1	28



**GALVANIZED GROUND STRAP ECONOMY**

PART#	DESCRIPTION	PKG QTY	CTN QTY	CTN WT.
2167	6" GALVANIZED GROUND STRAP ECONOMY	500	1	23
2168	9" GALVANIZED GROUND STRAP ECONOMY	500	1	27
2169	12" GALVANIZED GROUND STRAP ECONOMY	500	1	32

*Water Pipe Clamps*



ALUMINUM WATER PIPE CLAMP

ALUMINUM PIPE CLAMP

PART#	DESCRIPTION	PKG QTY	CTN QTY	CTN WT.
967	1/2"-1" ALUMINUM PIPE CLAMP	100	1	10
968	1-1/4"-2" ALUMINUM PIPE CLAMP	50	1	11



ZINC DIECAST WATER PIPE CLAMP

ZINC PIPE CLAMP

PART#	DESCRIPTION	PKG QTY	CTN QTY	CTN WT.
939	1/2"-1" ZINC PIPE CLAMP	100	1	15
940	1-1/4"-2" ZINC PIPE CLAMP	50	1	11



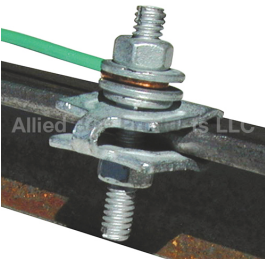
BRONZE WATER PIPE CLAMP

BRONZE PIPE CLAMP

PART#	DESCRIPTION	PKG QTY	CTN QTY	CTN WT.
965	1/2"-1" BRONZE PIPE CLAMP	100	1	20
966	1-1/4"-2" BRONZE PIPE CLAMP	50	1	25
965DB	1/2"-1" BRONZE PIPE CLAMP DIRECT BURIAL	100	1	21



*I Beam Clamps*



ECONOMY I-BEAM GROUND CLAMP

PART#	DESCRIPTION	PKG QTY	CTN QTY	CTN WT.
10069	ECONOMY I BEAM GROUNDING CLAMP	50	4	23



TRAILER GROUND CLAMP

TRAILER GROUND CLAMP

PART#	DESCRIPTION	PKG QTY	CTN QTY	CTN WT.
6620HX	TRAILER GROUND CLAMP WITH HEX BOLT	50	1	15
6620SQ	TRAILER GROUND CLAMP WITH SQUARE BOLT	50	1	15





**TWO PIECE TRAILER GROUND CLAMP**

PART#	DESCRIPTION	PKG QTY	CTN QTY	CTN WT.
9840	TWO PIECE TRAILER GROUND CLAMP	10	16	40

**Bonding Ribbon Clamps**



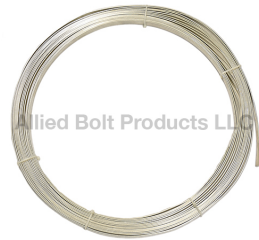
**BONDING RIBBON CONNECTOR**

PART#	DESCRIPTION	PKG QTY	CTN QTY	CTN WT.
2536	BONDING RIBBON CONNECTOR	50	4	22



**BONDING RIBBON CLAMP**

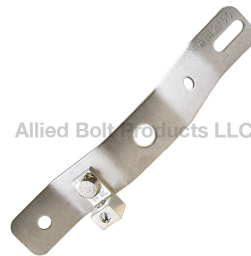
PART#	DESCRIPTION	PKG QTY	CTN QTY	CTN WT.
2532	BONDING RIBBON CLAMP	100	4	4



**TIN PLATED COPPER BONDING RIBBON**

PART#	DESCRIPTION	PKG QTY	CTN QTY	CTN WT.
2501	.050" X 3/8" COPPER BONDING RIBBON TIN PLATED (5LB)	1	1	6
2502	.050" X 1/2" COPPER BONDING RIBBON TIN PLATED (5LB)	1	1	5
2503	.063" X 3/8" COPPER BONDING RIBBON TIN PLATED (5LB)	10	1	52
2504	.063" X 1/2" COPPER BONDING RIBBON TIN PLATED (50 FT)	1	1	6

**MDU Bracket**

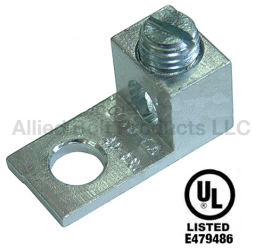


**GROUNDING TAP BRACKET**

PART#	DESCRIPTION	PKG QTY	CTN QTY	CTN WT.
2150	GROUNDING TAP BRACKET	100	1	13

**Ground Lugs**





**ALUMINUM TERMINAL LUG**

PART#	DESCRIPTION	PKG QTY	CTN QTY	CTN WT.
8700	ALUMINUM GROUNDING LUG	50	16	11



**BRONZE TERMINAL LUG**

PART#	DESCRIPTION	PKG QTY	CTN QTY	CTN WT.
8701	#4-14 AWG BRONZE GROUND CONNECTOR	100	4	20