



Power Driven Anchors

SOLID SQUARE HUB SINGLE HELIX POWER DRIVEN ANCHOR

1-3/8" SQ. SOLID HUB: 4000 FT. LB. MAXIMUM WORKING TORQUE



| PART# | DESCRIPTION | PKG QTY | CTN QTY | CTN WT. |
|-------|--|---------|---------|---------|
| 3404 | 8" SINGLE SOLID SQUARE HUB HELIX POWER DRIVEN ANCHOR 1-3/8" HUB FOR 3/4" & 1" RODS - 4000 FT. LB. | 6 | 1 | 62 |
| 3405 | 10" SINGLE SOLID SQUARE HUB HELIX POWER DRIVEN ANCHOR 1-3/8" HUB FOR 5/8" RODS - 4000 FT. LB. | 4 | 1 | 50 |
| 3406 | 10" SINGLE SOLID SQUARE HUB HELIX POWER DRIVEN ANCHOR 1-3/8" HUB FOR 3/4" & 1" RODS - 4000 FT. LB. | 4 | 1 | 54 |
| 3407 | 12" SINGLE SOLID SQUARE HUB HELIX POWER DRIVEN ANCHOR 1-3/8" HUB 4000LB FOR 5/8" RODS - 4000 FT. LB. | 2 | 1 | 34 |
| 3408 | 12" SINGLE SOLID SQUARE HUB HELIX POWER DRIVEN ANCHOR 1-3/8" HUB FOR 3/4" & 1" RODS - 4000 FT. LB. | 2 | 1 | 34 |

1-3/8" SQ. SOLID HUB: 6000 FT. LB. MAXIMUM WORKING TORQUE



| PART# | DESCRIPTION | PKG QTY | CTN QTY | CTN WT. |
|-------|--|---------|---------|---------|
| 3432 | 8" SINGLE SOLID SQUARE HUB HELIX POWER DRIVEN ANCHOR 1-3/8" FOR 5/8" RODS - 6000 FT. LB. | 6 | 1 | 58 |
| 3433 | 8" SINGLE SOLID SQUARE HUB HELIX POWER DRIVEN ANCHOR 1-3/8" FOR 3/4" & 1" RODS - 6000 FT. LB. | 6 | 1 | 62 |
| 3434 | 10" SINGLE SOLID SQUARE HUB HELIX POWER DRIVEN ANCHOR 1-3/8" HUB FOR 5/8" RODS - 6000 FT. LB. | 4 | 1 | 50 |
| 3435 | 10" SINGLE SOLID SQUARE HUB HELIX POWER DRIVEN ANCHOR 1-3/8" HUB FOR 3/4" & 1" RODS - 6000 FT. LB. | 4 | 1 | 60 |
| 3436 | 12" SINGLE SOLID SQUARE HUB HELIX POWER DRIVEN ANCHOR 1-3/8" HUB FOR 5/8" RODS - 6000 FT. LB. | 2 | 1 | 33 |
| 3437 | 12" SINGLE SOLID SQUARE HUB HELIX POWER DRIVEN ANCHOR 1-3/8" HUB FOR 3/4" & 1" RODS - 6000 FT. LB. | 2 | 1 | 40 |
| 3438 | 14" SINGLE SOLID SQUARE HUB HELIX POWER DRIVEN ANCHOR 1-3/8" HUB FOR 3/4" & 1" RODS - 6000 FT. LB. | 2 | 1 | 44 |
| 3439 | 15" SINGLE SOLID SQUARE HUB HELIX POWER DRIVEN ANCHOR 1-3/8" HUB FOR 3/4" & 1" RODS - 6000 FT. LB. | 2 | 1 | 52 |

1-1/2" SQ. SOLID HUB: 6000 FT. LB. MAXIMUM WORKING TORQUE



| PART# | DESCRIPTION | PKG QTY | CTN QTY | CTN WT. |
|-------|---|---------|---------|---------|
| 3473 | 8" SINGLE SOLID SQUARE HUB HELIX POWER DRIVEN ANCHOR 1-1/2" HUB FOR 5/8" RODS - 6000 FT. LB. | 6 | 1 | 60 |
| 3474 | 8" SINGLE SOLID SQUARE HUB HELIX POWER DRIVEN ANCHOR 1-1/2" HUB FOR 3/4" & 1" RODS - 6000 FT. LB. | 6 | 1 | 60 |
| 3475 | 10" SINGLE SOLID SQUARE HUB HELIX POWER DRIVEN ANCHOR 1-1/2" HUB FOR 5/8" RODS - 6000 FT. LB. | 4 | 1 | 54 |
| 3476 | 10" SINGLE SOLID SQUARE HUB HELIX POWER DRIVEN ANCHOR 1-1/2" HUB FOR 3/4" & 1" RODS - 6000 FT. LB. | 4 | 1 | 64 |
| 3478 | 12" SINGLE SOLID SQUARE HUB HELIX POWER DRIVEN ANCHOR 1-1/2" HUB FOR 3/4" & 1" RODS - 6000 FT. LB. | 2 | 1 | 36 |
| 3479 | 14" SINGLE SOLID SQUARE HUB HELIX POWER DRIVEN ANCHOR 1-1/2" HUB FOR 3/4" & 1" RODS - 6000 FT. LB. | 2 | 1 | 42 |
| 3480 | 15" SINGLE SOLID SQUARE HUB HELIX POWER DRIVEN ANCHOR 1-1/2" HUB FOR 3/4" OR 1" RODS - 6000 FT. LB. | 2 | 1 | 48 |

1-1/2" SQ. SOLID HUB: 7000 FT. LB. MAXIMUM WORKING TORQUE



| PART# | DESCRIPTION | PKG QTY | CTN QTY | CTN WT. |
|-------|--|---------|---------|---------|
| 3450 | 8" SINGLE SOLID SQUARE HUB HELIX POWER DRIVEN ANCHOR 1-1/2" HUB FOR 3/4" & 1" RODS - 7000 FT. LB. | 6 | 1 | 59 |
| 3451 | 10" SINGLE SOLID SQUARE HUB HELIX POWER DRIVEN ANCHOR 1-1/2" HUB FOR 3/4" & 1" RODS - 7000 FT. LB. | 4 | 1 | 52 |
| 3452 | 12" SINGLE SOLID SQUARE HUB HELIX POWER DRIVEN ANCHOR 1-1/2" HUB FOR 3/4" & 1" RODS - 7000 FT. LB. | 2 | 1 | 35 |



1-1/2" SQ. SOLID HUB: 8000 FT. LB. MAXIMUM WORKING TORQUE

| PART# | DESCRIPTION | PKG QTY | CTN QTY | CTN WT. |
|-------|--|---------|---------|---------|
| 3460 | 8" SINGLE SOLID SQUARE HUB HELIX POWER DRIVEN ANCHOR 1-1/2" HUB FOR 3/4" & 1" RODS - 8000 FT. LB. | 6 | 1 | 62 |
| 3461 | 10" SINGLE SOLID SQUARE HUB HELIX POWER DRIVEN ANCHOR 1-1/2" HUB FOR 3/4" & 1" RODS - 8000 FT. LB. | 4 | 1 | 52 |
| 3462 | 12" SINGLE SOLID SQUARE HUB HELIX POWER DRIVEN ANCHOR 1-1/2" HUB FOR 3/4" & 1" RODS - 8000 FT. LB. | 2 | 1 | 35 |
| 3463 | 15" SINGLE SOLID SQUARE HUB HELIX POWER DRIVEN ANCHOR 1-1/2" HUB FOR 3/4" & 1" RODS - 8000 FT. LB. | 2 | 1 | 40 |



SOLID SQUARE HUB TWIN HELIX POWER DRIVEN ANCHOR

1-3/8" SQ. SOLID HUB: 4000 FT. LB. MAXIMUM WORKING TORQUE

| PART# | DESCRIPTION | PKG QTY | CTN QTY | CTN WT. |
|-------|--|---------|---------|---------|
| 3490 | 8" TWIN SOLID SQUARE HUB HELIX POWER DRIVEN ANCHOR 1-3/8" HUB - 4000 FT. LB. FOR 3/4" AND 1" RODS | 1 | 1 | 24 |
| 3491 | 10" TWIN SOLID SQUARE HUB HELIX POWER DRIVEN ANCHOR 1-3/8" HUB - 4000 FT. LB. FOR 3/4" AND 1" RODS | 1 | 1 | 13 |



1-3/8" SQ. SOLID HUB: 6000 FT. LB. MAXIMUM WORKING TORQUE

| PART# | DESCRIPTION | PKG QTY | CTN QTY | CTN WT. |
|-------|--|---------|---------|---------|
| 3492 | 4" TWIN SOLID SQUARE HUB HELIX POWER DRIVEN ANCHOR 1-3/8" HUB - 6000 FT. LB. FOR 3/4" AND 1" RODS | 1 | 1 | 8 |
| 3430 | 4" AND 8" TWIN SOLID SQUARE HUB HELIX POWER DRIVEN ANCHOR 1-3/8" HUB - 6000 FT. LB. FOR 3/4" AND 1" RODS | 1 | 1 | 35 |
| 3493 | 8" TWIN SOLID SQUARE HUB HELIX POWER DRIVEN ANCHOR 1-3/8" HUB - 6000 FT. LB. FOR 3/4" AND 1" RODS | 1 | 1 | 29 |
| 3494 | 10" SOLID SQUARE HUB TWIN HELIX POWER DRIVEN ANCHOR 1-3/8" HUB - 6000 FT. LB. FOR 3/4" AND 1" RODS | 1 | 1 | 35 |



1-1/2" SQ. SOLID HUB: 6000 FT. LB. MAXIMUM WORKING TORQUE

| PART# | DESCRIPTION | PKG QTY | CTN QTY | CTN WT. |
|-------|--|---------|---------|---------|
| 3495 | 8" TWIN SOLID SQUARE HUB HELIX POWER DRIVEN ANCHOR 1-1/2" HUB - 6000 FT. LB. FOR 3/4" AND 1" RODS | 1 | 1 | 32 |
| 3496 | 10" TWIN SOLID SQUARE HUB HELIX POWER DRIVEN ANCHOR 1-1/2" HUB - 6000 FT. LB. FOR 3/4" AND 1" RODS | 1 | 1 | 38 |



1-1/2" SQ. SOLID HUB: 7000 FT. LB. MAXIMUM WORKING TORQUE

| PART# | DESCRIPTION | PKG QTY | CTN QTY | CTN WT. |
|-------|--|---------|---------|---------|
| 3499 | 10" TWIN SOLID SQUARE HUB HELIX POWER DRIVEN ANCHOR 1-1/2" HUB - 7000 FT. LB. FOR 3/4" AND 1" RODS | 1 | 1 | 38 |
| 3497 | 4" TWIN SOLID SQUARE HUB HELIX POWER DRIVEN ANCHOR 1-1/2" HUB - 7000 FT. LB. FOR 3/4" AND 1" RODS | 1 | 1 | 18 |
| 3498 | 8" TWIN SOLID SQUARE HUB HELIX POWER DRIVEN ANCHOR 1-1/2" HUB - 7000 FT. LB. FOR 3/4" AND 1" RODS | 1 | 1 | 32 |

SOCKET DRIVE POWER INSTALLED ANCHOR

2-1/4" SOCKET DRIVE HUB POWER INSTALLED ANCHOR: 8000 FT. LB. MAXIMUM WORKING TORQUE



| PART# | DESCRIPTION | PKG QTY | CTN QTY | CTN WT. |
|-------|---|---------|---------|---------|
| 3500 | 8" SOCKET ANCHOR 8000 FT. LB. FOR 5/8" RODS | 6 | 1 | 49 |
| 3501 | 8" SOCKET ANCHOR 8000 FT. LB. FOR 3/4" AND 1" RODS | 6 | 1 | 49 |
| 3502 | 10" SOCKET ANCHOR 8000 FT. LB. FOR 5/8" RODS | 4 | 1 | 47 |
| 3503 | 10" SOCKET ANCHOR 8000 FT. LB. FOR 3/4" AND 1" RODS | 4 | 1 | 47 |
| 3504 | 12" SOCKET ANCHOR 8000 FT. LB. FOR 3/4" AND 1" RODS | 2 | 1 | 46 |
| 3505 | 14" SOCKET ANCHOR 8000 FT. LB. FOR 3/4" AND 1" RODS | 2 | 1 | 54 |

2-1/4" SOCKET DRIVE HUB POWER INSTALLED ANCHOR: 10000 FT. LB. MAXIMUM WORKING TORQUE



| PART# | DESCRIPTION | PKG QTY | CTN QTY | CTN WT. |
|-------|--|---------|---------|---------|
| 3511 | 8" SOCKET ANCHOR 10000 FT. LB. FOR 3/4" AND 1" RODS | 6 | 1 | 75 |
| 3512 | 10" SOCKET ANCHOR 10000 FT. LB. FOR 3/4" AND 1" RODS | 4 | 1 | 68 |
| 3512B | 10" SOCKET ANCHOR 10000 FT. LB. FOR 3/4" AND 1" RODS | 4 | 1 | 68 |
| 3513 | 12" SOCKET ANCHOR 10000 FT. LB. FOR 3/4" AND 1" RODS | 2 | 1 | 46 |
| 3514 | 14" SOCKET ANCHOR 10000 FT. LB. FOR 3/4" AND 1" RODS | 2 | 1 | 56 |

2-1/2" SOCKET DRIVE HUB POWER INSTALLED ANCHOR: 8000 FT. LB. MAXIMUM WORKING TORQUE



| PART# | DESCRIPTION | PKG QTY | CTN QTY | CTN WT. |
|-------|---|---------|---------|---------|
| 3520 | 8" SOCKET ANCHOR 8000 FT. LB. FOR 5/8" RODS | 6 | 1 | 90 |
| 3521 | 8" SOCKET ANCHOR 8000 FT. LB. FOR 3/4" AND 1" RODS | 6 | 1 | 92 |
| 3522 | 10" SOCKET ANCHOR 8000 FT. LB. FOR 5/8" RODS | 4 | 1 | 128 |
| 3523 | 10" SOCKET ANCHOR 8000 FT. LB. FOR 3/4" AND 1" RODS | 4 | 1 | 75 |
| 3524 | 12" SOCKET ANCHOR 8000 FT. LB. FOR 5/8" RODS | 2 | 1 | 54 |
| 3525 | 12" SOCKET ANCHOR 8000 FT. LB. FOR 3/4" AND 1" RODS | 2 | 1 | 54 |
| 3526 | 14" SOCKET ANCHOR 8000 FT. LB. FOR 3/4" AND 1" RODS | 2 | 1 | 64 |

2-1/2" SOCKET DRIVE HUB POWER INSTALLED ANCHOR: 15000 FT. LB. MAXIMUM WORKING TORQUE

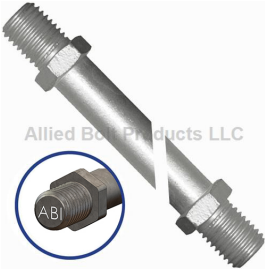


| PART# | DESCRIPTION | PKG QTY | CTN QTY | CTN WT. |
|-------|--|---------|---------|---------|
| 3530 | 8" SOCKET ANCHOR 15000 FT. LB. FOR 3/4" AND 1" RODS | 6 | 1 | 109 |
| 3531 | 10" SOCKET ANCHOR 15000 FT. LB. FOR 3/4" AND 1" RODS | 2 | 1 | 44 |
| 3532 | 12" SOCKET ANCHOR 15000 FT. LB. FOR 3/4" AND 1" RODS | 2 | 1 | 53 |
| 3533 | 14" SOCKET ANCHOR 15000 FT. LB. FOR 3/4" AND 1" RODS | 2 | 1 | 64 |

Power Driven Anchor Rods

ANCHOR ROD FOR HELICAL ANCHORS

ANCHOR ROD FOR HELICAL ANCHORS



| PART# | DESCRIPTION | PKG QTY | CTN QTY | CTN WT. |
|-------|--|---------|---------|---------|
| 3420 | 5/8" X 3-1/2' ANCHOR ROD FOR HELICAL ANCHORS | 5 | 1 | 18 |
| 3423 | 5/8" X 7' ANCHOR ROD FOR HELICAL ANCHORS | 5 | 1 | 37 |
| 3421 | 3/4" X 3-1/2' ANCHOR ROD FOR HELICAL ANCHORS | 5 | 1 | 25 |
| 3424 | 3/4" X 7' ANCHOR ROD FOR HELICAL ANCHORS | 5 | 1 | 47 |
| 3598 | 1" X 1-1/2' ANCHOR ROD EXT FOR HELICAL ANCHORS | 16 | 1 | 64 |
| 3422 | 1" X 3-1/2' ANCHOR ROD FOR HELICAL ANCHORS | 5 | 1 | 48 |
| 3425 | 1" X 7' ANCHOR ROD FOR HELICAL ANCHORS | 5 | 1 | 90 |



Allied Bolt Products LLC

ANCHOR ROD AND EYE NUT ASSEMBLIES FOR HELICAL HUB ANCHORS

ANCHOR ROD WITH ASSEMBLED SINGLE EYE NUT

| PART# | DESCRIPTION | PKG QTY | CTN QTY | CTN WT. |
|-------|--|---------|---------|---------|
| 3601 | 5/8" X 3-1/2' ANCHOR ROD WITH ASSEMBLED SINGLE EYE NUT | 1 | 1 | 5 |
| 3610 | 5/8" X 7' ANCHOR ROD WITH ASSEMBLED SINGLE EYE NUT | 1 | 1 | 9 |
| 3604 | 3/4" X 3-1/2' ANCHOR ROD WITH ASSEMBLED SINGLE EYE NUT | 1 | 1 | 7 |
| 3613 | 3/4" X 7' ANCHOR ROD WITH ASSEMBLED SINGLE EYE NUT | 1 | 1 | 12 |
| 3607 | 1" X 3-1/2' ANCHOR ROD WITH ASSEMBLED SINGLE EYE NUT | 1 | 1 | 12 |
| 3616 | 1" X 7' ANCHOR ROD WITH ASSEMBLED SINGLE EYE NUT | 1 | 1 | 18 |



Allied Bolt Products LLC

ANCHOR ROD WITH ASSEMBLED TWIN EYE NUT

| PART# | DESCRIPTION | PKG QTY | CTN QTY | CTN WT. |
|-------|--|---------|---------|---------|
| 3602 | 5/8" X 3-1/2' ANCHOR ROD WITH ASSEMBLED TWIN EYE NUT | 1 | 1 | 6 |
| 3611 | 5/8" X 7' ANCHOR ROD WITH ASSEMBLED TWIN EYE NUT | 1 | 1 | 10 |
| 3605 | 3/4" X 3-1/2' ANCHOR ROD WITH ASSEMBLED TWIN EYE NUT | 1 | 1 | 8 |
| 3614 | 3/4" X 7' ANCHOR ROD WITH ASSEMBLED TWIN EYE NUT | 1 | 1 | 12 |
| 3608 | 1" X 3-1/2' ANCHOR ROD WITH ASSEMBLED TWIN EYE NUT | 1 | 1 | 12 |
| 3617 | 1" X 7' ANCHOR ROD WITH ASSEMBLED TWIN EYE NUT | 1 | 1 | 19 |



Allied Bolt Products LLC

ANCHOR ROD WITH ASSEMBLED TRIPLE EYE NUT

| PART# | DESCRIPTION | PKG QTY | CTN QTY | CTN WT. |
|-------|--|---------|---------|---------|
| 3603 | 5/8" X 3-1/2' ANCHOR ROD WITH ASSEMBLED TRIPLE EYE NUT | 1 | 1 | 8 |
| 3612 | 5/8" X 7' ANCHOR ROD WITH ASSEMBLED TRIPLE EYE NUT | 1 | 1 | 10 |
| 3606 | 3/4" X 3-1/2' ANCHOR ROD WITH ASSEMBLED TRIPLE EYE NUT | 1 | 1 | 9 |
| 3615 | 3/4" X 7' ANCHOR ROD WITH ASSEMBLED TRIPLE EYE NUT | 1 | 1 | 12 |
| 3609 | 1" X 3-1/2' ANCHOR ROD WITH ASSEMBLED TRIPLE EYE NUT | 1 | 1 | 12 |
| 3618 | 1" X 7' ANCHOR ROD WITH ASSEMBLED TRIPLE EYE NUT | 1 | 1 | 19 |



Allied Bolt Products LLC

ANCHOR ROD AND COUPLING NUT ASSEMBLIES FOR HELICAL HUB ANCHORS

ANCHOR ROD WITH ASSEMBLED COUPLING NUT

| PART# | DESCRIPTION | PKG QTY | CTN QTY | CTN WT. |
|-------|--|---------|---------|---------|
| 3640 | 5/8" X 3-1/2' ANCHOR ROD WITH ASSEMBLED COUPLING NUT | 1 | 1 | 5 |
| 3643 | 5/8" X 7' ANCHOR ROD WITH ASSEMBLED COUPLING NUT | 1 | 1 | 8 |
| 3641 | 3/4" X 3-1/2' ANCHOR ROD WITH ASSEMBLED COUPLING NUT | 1 | 1 | 6 |
| 3644 | 3/4" X 7' ANCHOR ROD WITH ASSEMBLED COUPLING NUT | 1 | 1 | 10 |
| 3642 | 1" X 3-1/2' ANCHOR ROD WITH ASSEMBLED COUPLING NUT | 1 | 1 | 11 |
| 3645 | 1" X 7' ANCHOR ROD WITH ASSEMBLED COUPLING NUT | 1 | 1 | 16 |



Allied Bolt Products LLC

PROTECTED POWER ANCHOR ROD FOR HELICAL ANCHOR

PROTECTED POWER ANCHOR ROD

| PART# | DESCRIPTION | PKG QTY | CTN QTY | CTN WT. |
|---------|---|---------|---------|---------|
| 3425PRO | 1" X 7' PROTECTED POWER ANCHOR ROD FOR HELICAL ANCHOR | 5 | 1 | 90 |

Non-Power Driven Anchors

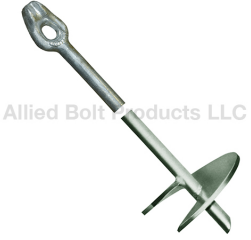


Allied Bolt Products LLC

NO WRENCH SCREW ANCHOR

TRIPLE STRAND NO-WRENCH SCREW ANCHOR HELIX

| PART# | DESCRIPTION | PKG QTY | CTN QTY | CTN WT. |
|-------|---|---------|---------|---------|
| 6044 | 3/4" X 54" TRIPLE STRAND NO-WRENCH SCREW ANCHOR 4" HELIX | 1 | 1 | 9 |
| 1166 | 3/4" X 66" TRIPLE STRAND NO-WRENCH SCREW ANCHOR 6" HELIX | 1 | 1 | 12 |
| 1167 | 1" X 66" TRIPLE STRAND NO-WRENCH SCREW ANCHOR 8" HELIX | 1 | 1 | 19 |
| 1168 | 1-1/4" X 66" TRIPLE STRAND NO-WRENCH SCREW ANCHOR 10" HELIX | 1 | 1 | 31 |
| 1169 | 1-1/4" X 96" TRIPLE STRAND NO-WRENCH SCREW ANCHOR 10" HELIX | 1 | 1 | 42 |
| 1163 | 1-1/4" X 96" TRIPLE STRAND NO-WRENCH SCREW ANCHOR 15" HELIX | 1 | 1 | 52 |



Allied Bolt Products LLC

SINGLE STRAND NO-WRENCH SCREW ANCHOR HELIX

| PART# | DESCRIPTION | PKG QTY | CTN QTY | CTN WT. |
|--------|--|---------|---------|---------|
| 6044-1 | 3/4" X 54" SINGLE STRAND NO-WRENCH SCREW ANCHOR 4" HELIX | 1 | 1 | 9 |
| 1166-1 | 3/4" X 66" SINGLE STRAND NO-WRENCH SCREW ANCHOR 6" HELIX | 1 | 1 | 12 |
| 1167-1 | 1" X 66" SINGLE STRAND NO-WRENCH SCREW ANCHOR 8" HELIX | 1 | 1 | 19 |



Allied Bolt Products LLC

EXTENDABLE ROCK ANCHOR

Expanding Rock Anchor w/ Power Rod

| PART# | DESCRIPTION | PKG QTY | CTN QTY | CTN WT. |
|-------|---------------------------------|---------|---------|---------|
| 55513 | 1" x 84" EXTENDABLE ROCK ANCHOR | 1 | 1 | 26 |



Allied Bolt Products LLC

EXPANDING ROCK ANCHOR

3/4" EXPANDING ROCK ANCHOR

| PART# | DESCRIPTION | PKG QTY | CTN QTY | CTN WT. |
|-------|----------------------------------|---------|---------|---------|
| 55500 | 3/4" X 15" EXPANDING ROCK ANCHOR | 10 | 1 | 50 |
| 55501 | 3/4" X 30" EXPANDING ROCK ANCHOR | 1 | 1 | 7 |
| 55502 | 3/4" X 53" EXPANDING ROCK ANCHOR | 1 | 1 | 10 |
| 55503 | 3/4" X 60" EXPANDING ROCK ANCHOR | 1 | 1 | 11 |
| 55504 | 3/4" X 72" EXPANDING ROCK ANCHOR | 1 | 1 | 12 |
| 55505 | 3/4" X 84" EXPANDING ROCK ANCHOR | 1 | 1 | 13 |
| 55506 | 3/4" X 96" EXPANDING ROCK ANCHOR | 1 | 1 | 15 |



Allied Bolt Products LLC

1" EXPANDING ROCK ANCHOR

| PART# | DESCRIPTION | PKG QTY | CTN QTY | CTN WT. |
|-------|--------------------------------|---------|---------|---------|
| 55508 | 1" X 30" EXPANDING ROCK ANCHOR | 1 | 1 | 14 |
| 55509 | 1" X 53" EXPANDING ROCK ANCHOR | 1 | 1 | 18 |
| 55510 | 1" X 72" EXPANDING ROCK ANCHOR | 1 | 1 | 24 |
| 55511 | 1" X 84" EXPANDING ROCK ANCHOR | 1 | 1 | 26 |
| 55512 | 1" X 96" EXPANDING ROCK ANCHOR | 1 | 1 | 29 |



CROSS PLATE ANCHOR
16" CROSSPLATE ANCHOR

| PART# | DESCRIPTION | PKG QTY | CTN QTY | CTN WT. |
|-------|--|---------|---------|---------|
| 3950 | 16" CROSSPLATE ANCHOR FOR 5/8" OR 3/4" ROD | 5 | 1 | 49 |



20" CROSSPLATE ANCHOR

| PART# | DESCRIPTION | PKG QTY | CTN QTY | CTN WT. |
|-------|---|---------|---------|---------|
| 3951 | 20" CROSSPLATE ANCHOR FOR 5/8" or 3/4" RODS | 4 | 1 | 59 |
| 3952 | 20" CROSSPLATE ANCHOR FOR 1" RODS | 4 | 1 | 62 |



24" CROSSPLATE ANCHOR

| PART# | DESCRIPTION | PKG QTY | CTN QTY | CTN WT. |
|-------|--|---------|---------|---------|
| 3953 | 24" CROSSPLATE ANCHOR FOR 5/8" OR 3/4" ROD | 2 | 1 | 68 |
| 3954 | 24" CROSSPLATE ANCHOR FOR 1" ROD | 2 | 1 | 62 |
| 3955 | 24" CROSSPLATE ANCHOR FOR 1-1/4" ROD | 2 | 1 | 66 |



EXPANDING POLE KEY ANCHOR

| PART# | DESCRIPTION | PKG QTY | CTN QTY | CTN WT. |
|-------|-----------------------------------|---------|---------|---------|
| 3965 | 27-1/4" EXPANDING POLE KEY ANCHOR | 1 | 4 | 92 |



BUST ANCHOR
EXPANDING ANCHOR

| PART# | DESCRIPTION | PKG QTY | CTN QTY | CTN WT. |
|-------|--|---------|---------|---------|
| 19020 | 6" EXPANDING ANCHOR FOR 1/2" OR 5/8" ROD | 1 | 1 | 5 |
| 19021 | 8" EXPANDING ANCHOR FOR 3/4" ROD | 1 | 1 | 10 |
| 19023 | 10" EXPANDING ANCHOR FOR 3/4" ROD | 1 | 1 | 21 |
| 19022 | 10" EXPANDING ANCHOR FOR 1" ROD | 1 | 1 | 20 |
| 19024 | 12" EXPANDING ANCHOR FOR 1" ROD | 1 | 1 | 33 |
| 19025 | 12" EXPANDING ANCHOR FOR 1-1/4" ROD | 1 | 1 | 33 |

Power Driven Anchor Rod Accessories



Allied Bolt Products LLC

EYE NUT FOR HELICAL ANCHORS
SINGLE EYE NUT FOR HELICAL ANCHORS

| PART# | DESCRIPTION | PKG QTY | CTN QTY | CTN WT. |
|-------|--|---------|---------|---------|
| 5049 | 5/8" SINGLE EYE NUT FOR HELICAL ANCHORS | 50 | 1 | 42 |
| 5095 | 3/4" AND 1" SINGLE EYE NUT FOR HELICAL ANCHORS | 20 | 1 | 34 |



Allied Bolt Products LLC

DOUBLE EYE NUT FOR HELICAL ANCHORS

| PART# | DESCRIPTION | PKG QTY | CTN QTY | CTN WT. |
|-------|--|---------|---------|---------|
| 5041 | 5/8" DOUBLE EYE NUT FOR HELICAL ANCHORS | 25 | 1 | 30 |
| 5042 | 3/4" AND 1" DOUBLE EYE NUT FOR HELICAL ANCHORS | 25 | 1 | 50 |



Allied Bolt Products LLC

TRIPLE EYE NUT FOR HELICAL ANCHORS

| PART# | DESCRIPTION | PKG QTY | CTN QTY | CTN WT. |
|-------|--|---------|---------|---------|
| 5044 | 5/8" TRIPLE EYE NUT FOR HELICAL ANCHORS | 20 | 1 | 46 |
| 5043 | 3/4" AND 1" TRIPLE EYE NUT FOR HELICAL ANCHORS | 20 | 1 | 46 |



Allied Bolt Products LLC

ANCHOR ROD COUPLING NUT
COUPLING NUT FOR ANCHOR RODS

| PART# | DESCRIPTION | PKG QTY | CTN QTY | CTN WT. |
|-------|--|---------|---------|---------|
| 5052 | COUPLING NUT FOR 5/8" ANCHOR RODS | 25 | 1 | 13 |
| 5053 | COUPLING NUT FOR 3/4" AND 1" ANCHOR RODS | 25 | 1 | 13 |



Allied Bolt Products LLC

BONDING CLAMP FOR POWER ANCHOR ROD
SINGLE STRAND BONDING CLAMP FOR POWER ANCHOR ROD

| PART# | DESCRIPTION | PKG QTY | CTN QTY | CTN WT. |
|-------|---|---------|---------|---------|
| 7901 | SINGLE STRAND BONDING CLAMP FOR POWER ANCHOR ROD 5/8" DIAMETER | 25 | 1 | 7 |
| 7902 | SINGLE STRAND BONDING CLAMP FOR POWER ANCHOR ROD 3/4" AND 1" DIAMETER | 25 | 1 | 9 |



Allied Bolt Products LLC

DOUBLE STRAND BONDING CLAMP FOR POWER ANCHOR ROD

| PART# | DESCRIPTION | PKG QTY | CTN QTY | CTN WT. |
|-------|---|---------|---------|---------|
| 7903 | DOUBLE STRAND BONDING CLAMP FOR POWER ANCHOR ROD 5/8", 3/4" AND 1" DIAMETER | 25 | 1 | 9 |



Allied Bolt Products LLC

TRIPLE STRAND BONDING CLAMP FOR POWER ANCHOR ROD

| PART# | DESCRIPTION | PKG QTY | CTN QTY | CTN WT. |
|-------|---|---------|---------|---------|
| 7904 | TRIPLE STRAND BONDING CLAMP FOR POWER ANCHOR ROD 5/8", 3/4" AND 1" DIAMETER | 25 | 1 | 10 |

Multi Helix Lead Sections



Allied Bolt Products LLC

ROUND SHANK MULTI HELIX ANCHOR RATED 2,300 FT LBS

SINGLE HELIX ROUND SHANK ANCHOR 2,300LB RATING

| PART# | DESCRIPTION | PKG QTY | CTN QTY | CTN WT. |
|-------|---|---------|---------|---------|
| 3584 | 84" SINGLE HELIX ROUND SHANK ANCHOR WITH 10" HELIX 2,300LB RATING | 1 | 1 | 47 |



Allied Bolt Products LLC

MULTI HELIX ANCHOR RATED 5,000 FT LBS

SQUARE SHANK MULTI HELIX SCREW ANCHOR

| PART# | DESCRIPTION | PKG QTY | CTN QTY | CTN WT. |
|-------|---|---------|---------|---------|
| 3582 | 42" SQUARE SHANK MULTI HELIX ANCHOR WITH 10" AND 12" HELICES | 1 | 1 | 88 |
| 3555 | 84" SQUARE SHANK MULTI HELIX ANCHOR WITH 10", 12, AND 14" HELICES | 1 | 1 | 88 |

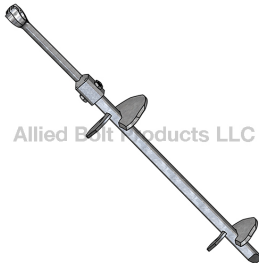


Allied Bolt Products LLC

MULTI HELIX ANCHOR RATED 7,000 FT LBS

SQUARE SHANK MULTI HELIX ANCHOR 7,000LB RATING

| PART# | DESCRIPTION | PKG QTY | CTN QTY | CTN WT. |
|-------|--|---------|---------|---------|
| 35510 | 36" SQUARE SHANK MULTI HELIX ANCHOR WITH 8" AND 10" HELICES 7,000LB RATING | 1 | 1 | 46 |
| 35821 | 42" SQUARE SHANK MULTI HELIX ANCHOR WITH 10" AND 12" HELICES 7,000LB RATING | 1 | 1 | 45 |
| 35530 | 66" SQUARE SHANK MULTI HELIX ANCHOR WITH 8", 10", AND 12" HELICES 7,000LB RATING | 1 | 1 | 65 |
| 35550 | 84" SQUARE SHANK MULTI HELIX ANCHOR WITH 10", 12, AND 14" HELICES 7,000LB RATING | 1 | 1 | 96 |



Allied Bolt Products LLC

LEAD SECTION WITH EYE GUY ADAPTOR

LEAD SECTION WITH TWIN EYE GUY ADAPTOR

| PART# | DESCRIPTION | PKG QTY | CTN QTY | CTN WT. |
|-------|---|---------|---------|---------|
| 3700 | 8" & 10" LEAD SECTION WITH TWIN EYE GUY ADAPTOR | 1 | 1 | 48 |
| 3701 | 10" & 12" LEAD SECTION WITH TWIN EYE GUY ADAPTOR | 1 | 1 | 58 |
| 3702 | 8", 10" & 12" LEAD SECTION WITH TWIN EYE GUY ADAPTOR | 1 | 1 | 78 |
| 3703 | 10", 12" & 14" LEAD SECTION WITH TWIN EYE GUY ADAPTOR | 1 | 1 | 109 |



Allied Bolt Products LLC

LEAD SECTION WITH TRIPLE EYE GUY ADAPTOR

| PART# | DESCRIPTION | PKG QTY | CTN QTY | CTN WT. |
|-------|---|---------|---------|---------|
| 3704 | 8" & 10" LEAD SECTION WITH TRIPLE EYE GUY ADAPTOR | 1 | 1 | 49 |
| 3705 | 10" & 12" LEAD SECTION WITH TRIPLE EYE GUY ADAPTOR | 1 | 1 | 59 |
| 3706 | 8", 10" & 12" LEAD SECTION WITH TRIPLE EYE GUY ADAPTOR | 1 | 1 | 79 |
| 3707 | 10", 12" & 14" LEAD SECTION WITH TRIPLE EYE GUY ADAPTOR | 1 | 1 | 110 |

Extensions and Adaptors For Multi Helix Anchors



Allied Bolt Products LLC

EXTENSION FOR MULTI HELIX ANCHOR 7,000 FT LB

EXTENSION FOR MULTI HELIX ANCHOR 7,000 FT LBS

| PART# | DESCRIPTION | PKG QTY | CTN QTY | CTN WT. |
|-------|--|---------|---------|---------|
| 35600 | 3-1/2' EXTENSION FOR MULTI HELIX ANCHOR 7,000LB RATING | 1 | 1 | 27 |
| 35610 | 5' EXTENSION FOR MULTI HELIX ANCHOR 7,000LB RATING | 1 | 1 | 40 |
| 35620 | 7' EXTENSION FOR MULTI HELIX ANCHOR 7,000LB RATING | 1 | 1 | 55 |
| 35630 | 10' EXTENSION FOR MULTI HELIX ANCHOR 7,000LB RATING | 1 | 1 | 76 |



Allied Bolt Products LLC

EXTENSION FOR ROUND ROD ANCHOR 2,300 FT LB

ROUND ROD EXTENSION FOR ROUND MULTI HELIX ANCHOR

| PART# | DESCRIPTION | PKG QTY | CTN QTY | CTN WT. |
|-------|---|---------|---------|---------|
| 3590 | 3-1/2' ROUND ROD EXTENSION FOR ROUND MULTI HELIX ANCHOR | 1 | 1 | 27 |
| 3591 | 5' ROUND ROD EXTENSION FOR ROUND MULTI HELIX ANCHOR | 1 | 1 | 25 |
| 3592 | 7' ROUND ROD EXTENSION FOR ROUND MULTI HELIX ANCHOR | 1 | 1 | 35 |



Allied Bolt Products LLC

Guy Adaptor For Multi Helix Anchor

SINGLE GUY ADAPTOR FOR MULTI HELIX ANCHOR

| PART# | DESCRIPTION | PKG QTY | CTN QTY | CTN WT. |
|-------|---|---------|---------|---------|
| 3565 | SINGLE GUY ADAPTOR FOR MULTI HELIX ANCHOR | 1 | 1 | 11 |



Allied Bolt Products LLC

DOUBLE GUY ADAPTOR FOR MULTI HELIX ANCHOR

| PART# | DESCRIPTION | PKG QTY | CTN QTY | CTN WT. |
|-------|---|---------|---------|---------|
| 3566 | DOUBLE GUY ADAPTOR FOR MULTI HELIX ANCHOR | 4 | 1 | 50 |



Allied Bolt Products LLC

TRIPLE GUY ADAPTOR FOR MULTI HELIX ANCHOR

| PART# | DESCRIPTION | PKG QTY | CTN QTY | CTN WT. |
|-------|---|---------|---------|---------|
| 3567 | TRIPLE GUY ADAPTOR FOR MULTI HELIX ANCHOR | 4 | 1 | 52 |



Allied Bolt Products LLC

REPLACEMENT BOLT AND NUT SET FOR ANCHOR EXTENSIONS

| PART# | DESCRIPTION | PKG QTY | CTN QTY | CTN WT. |
|---------|---|---------|---------|---------|
| 3560SET | REPLACEMENT BOLT AND NUT SET FOR ANCHOR EXTENSIONS AND ADAPTORS | 100 | 1 | 36 |



Tamping Tools



TAMPING BAR

TAMPING BAR

| PART# | DESCRIPTION | PKG QTY | CTN QTY | CTN WT. |
|--------|-----------------|---------|---------|---------|
| 10TAMP | 10' TAMPING BAR | 1 | 1 | 24 |
| 12TAMP | 12' TAMPING BAR | 1 | 1 | 29 |

Extensions for No Wrench Anchors and Anchor Rods



FORGED EXTENSION FOR NO WRENCH ANCHOR

FORGED EXTENSION FOR NO WRENCH ANCHOR

| PART# | DESCRIPTION | PKG QTY | CTN QTY | CTN WT. |
|-------|--|---------|---------|---------|
| 1160 | 1-1/4" X 24" FORGED EXTENSION FOR NO WRENCH ANCHOR | 2 | 1 | 25 |
| 1161 | 1-1/4" X 36" FORGED EXTENSION FOR NO WRENCH ANCHOR | 1 | 1 | 12 |
| 1165 | 1-1/4" X 72" FORGED EXTENSION FOR NO WRENCH ANCHOR | 1 | 1 | 28 |

Anchor Rods and Accessories



ANCHOR ROD

SINGLE STRAND ANCHOR ROD

| PART# | DESCRIPTION | PKG QTY | CTN QTY | CTN WT. |
|-------|-------------------------------------|---------|---------|---------|
| 4149 | 1/2" x 5' SINGLE STRAND ANCHOR ROD | 5 | 1 | 70 |
| 4145 | 1/2" x 6' SINGLE STRAND ANCHOR ROD | 5 | 1 | 70 |
| 4146 | 1/2" x 7' SINGLE STRAND ANCHOR ROD | 5 | 1 | 70 |
| 4150 | 5/8" X 5' SINGLE STRAND ANCHOR ROD | 5 | 1 | 27 |
| 4151 | 5/8" X 6' SINGLE STRAND ANCHOR ROD | 5 | 1 | 32 |
| 4152 | 5/8" X 7' SINGLE STRAND ANCHOR ROD | 5 | 1 | 38 |
| 4153 | 5/8" X 8' SINGLE STRAND ANCHOR ROD | 5 | 1 | 40 |
| 4154 | 3/4" X 7' SINGLE STRAND ANCHOR ROD | 5 | 1 | 55 |
| 4155 | 3/4" X 8' SINGLE STRAND ANCHOR ROD | 5 | 1 | 63 |
| 4156 | 3/4" X 10' SINGLE STRAND ANCHOR ROD | 5 | 1 | 75 |
| 4158 | 1" X 10' SINGLE STRAND ANCHOR ROD | 5 | 1 | 75 |



DOUBLE STRAND ANCHOR ROD

| PART# | DESCRIPTION | PKG QTY | CTN QTY | CTN WT. |
|-------|---------------------------------------|---------|---------|---------|
| 4165 | 5/8" X 6' DOUBLE STRAND ANCHOR ROD | 5 | 1 | 33 |
| 4166 | 5/8" X 7' DOUBLE STRAND ANCHOR ROD | 5 | 1 | 40 |
| 4167 | 5/8" X 8' DOUBLE STRAND ANCHOR ROD | 5 | 1 | 42 |
| 4168 | 3/4" X 6' DOUBLE STRAND ANCHOR ROD | 5 | 1 | 54 |
| 4169 | 3/4" X 7' DOUBLE STRAND ANCHOR ROD | 5 | 1 | 63 |
| 4170 | 3/4" X 8' DOUBLE STRAND ANCHOR ROD | 5 | 1 | 70 |
| 4171 | 3/4" X 9' DOUBLE STRAND ANCHOR ROD | 5 | 1 | 78 |
| 4172 | 3/4" X 10' DOUBLE STRAND ANCHOR ROD | 5 | 1 | 87 |
| 4173 | 1" X 8' DOUBLE STRAND ANCHOR ROD | 5 | 1 | 110 |
| 4174 | 1" X 10' DOUBLE STRAND ANCHOR ROD | 5 | 1 | 145 |
| 3620 | 1-1/4" x 10" DOUBLE STRAND ANCHOR ROD | 1 | 1 | 19 |



Allied Bolt Products LLC

TRIPLE STRAND ANCHOR ROD

| PART# | DESCRIPTION | PKG QTY | CTN QTY | CTN WT. |
|-------|---------------------------------------|---------|---------|---------|
| 4179 | 3/4" X 7' TRIPLE STRAND ANCHOR ROD | 5 | 1 | 12 |
| 4180 | 3/4" X 8' TRIPLE STRAND ANCHOR ROD | 5 | 1 | 60 |
| 4181 | 3/4" X 9' TRIPLE STRAND ANCHOR ROD | 5 | 1 | 73 |
| 4182 | 1" X 8' TRIPLE STRAND ANCHOR ROD | 5 | 1 | 100 |
| 4183 | 1" X 10' TRIPLE STRAND ANCHOR ROD | 5 | 1 | 145 |
| 4184 | 1-1/4" X 10' TRIPLE STRAND ANCHOR ROD | 5 | 1 | 220 |

PROTECTED ANCHOR ROD

3/4" SINGLE STRAND PROTECTED ANCHOR ROD



Allied Bolt Products LLC

| PART# | DESCRIPTION | PKG QTY | CTN QTY | CTN WT. |
|-------|-------------|---------|---------|---------|
|-------|-------------|---------|---------|---------|

3/4" DOUBLE STRAND PROTECTED ANCHOR ROD



Allied Bolt Products LLC

| PART# | DESCRIPTION | PKG QTY | CTN QTY | CTN WT. |
|---------|--|---------|---------|---------|
| 4170PRO | 3/4" X 8" DOUBLE STRAND PROTECTED ANCHOR ROD | 1 | 1 | 13 |

1" DOUBLE STRAND PROTECTED ANCHOR ROD



Allied Bolt Products LLC

| PART# | DESCRIPTION | PKG QTY | CTN QTY | CTN WT. |
|-------|-------------|---------|---------|---------|
|-------|-------------|---------|---------|---------|

3/4" TRIPLE STRAND PROTECTED ANCHOR ROD



Allied Bolt Products LLC

| PART# | DESCRIPTION | PKG QTY | CTN QTY | CTN WT. |
|-------|-------------|---------|---------|---------|
|-------|-------------|---------|---------|---------|

1" TRIPLE STRAND PROTECTED ANCHOR ROD



Allied Bolt Products LLC

| PART# | DESCRIPTION | PKG QTY | CTN QTY | CTN WT. |
|-------|-------------|---------|---------|---------|
|-------|-------------|---------|---------|---------|



HEAVY SQUARE NUT

HEAVY SQUARE NUT

| PART# | DESCRIPTION | PKG QTY | CTN QTY | CTN WT. |
|-------|---------------------------|---------|---------|---------|
| 8378 | 5/8"-11 HEAVY SQUARE NUT | 100 | 1 | 20 |
| 8376 | 3/4"-10 HEAVY SQUARE NUT | 100 | 1 | 20 |
| 8377 | 1"-8 HEAVY SQUARE NUT | 100 | 1 | 46 |
| 8379 | 1-1/4"-7 HEAVY SQUARE NUT | 50 | 1 | 40 |



ANCHOR ROD AUXILIARY EYE

ANCHOR ROD AUXILIARY EYE

| PART# | DESCRIPTION | PKG QTY | CTN QTY | CTN WT. |
|-------|--------------------------------------|---------|---------|---------|
| 3160 | 5/8"-3/4" ANCHOR ROD AUXILIARY EYE | 10 | 1 | 28 |
| 3162 | 1/2"-1-1/4" ANCHOR ROD AUXILIARY EYE | 5 | 1 | 16 |



BONDING CLAMP FOR ANCHOR RODS AND SCREW ANCHORS

SINGLE STRAND BONDING CLAMP FOR ANCHOR RODS AND SCREW ANCHORS

| PART# | DESCRIPTION | PKG QTY | CTN QTY | CTN WT. |
|-------|--|---------|---------|---------|
| 7905 | SINGLE STRAND BONDING CLAMP FOR ANCHOR RODS AND SCREW ANCHORS ROD DIAMETER 5/8", 3/4" & 1" | 50 | 1 | 9 |



DOUBLE STRAND BONDING CLAMP FOR ANCHOR RODS AND SCREW ANCHORS

| PART# | DESCRIPTION | PKG QTY | CTN QTY | CTN WT. |
|-------|--|---------|---------|---------|
| 7906 | DOUBLE STRAND BONDING CLAMP FOR ANCHOR RODS AND SCREW ANCHORS ROD DIAMETER 5/8", 3/4" & 1" | 50 | 1 | 7 |



TRIPLE STRAND BONDING CLAMP FOR ANCHOR RODS AND SCREW ANCHORS

| PART# | DESCRIPTION | PKG QTY | CTN QTY | CTN WT. |
|-------|--|---------|---------|---------|
| 7907 | TRIPLE STRAND BONDING CLAMP FOR ANCHOR RODS AND SCREW ANCHORS ROD DIAMETER 3/4", 1" & 1-1/4" | 40 | 1 | 11 |

Anchor Installing Tools



KELLY BAR ADAPTER

KELLY BAR ADAPTER - 10,000 LBS

| PART# | DESCRIPTION | PKG QTY | CTN QTY | CTN WT. |
|-------|-------------------------------------|---------|---------|---------|
| 3540 | 2" KELLY BAR ADAPTER 10,000 LBS | 1 | 1 | 10 |
| 3541 | 2-1/2" KELLY BAR ADAPTER 10,000 LBS | 1 | 1 | 41 |
| 3542 | 2-5/8" KELLY BAR ADAPTER 10,000 LBS | 1 | 1 | 12 |



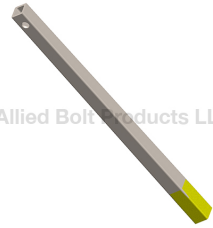
Allied Bolt Products LLC

KELLY BAR ADAPTER - 20,000 LBS

| PART# | DESCRIPTION | PKG QTY | CTN QTY | CTN WT. |
|-------|-------------------------------------|---------|---------|---------|
| 3543 | 2-1/2" KELLY BAR ADAPTER 20,000 LBS | 1 | 1 | 23 |
| 3544 | 2-5/8" KELLY BAR ADAPTER 20,000 LBS | 1 | 1 | 23 |
| 3545 | 3" KELLY BAR ADAPTER 20,000 LBS | 1 | 1 | 27 |

ANCHOR WRENCH TOOL

WRENCH TUBE YELLOW



Allied Bolt Products LLC

| PART# | DESCRIPTION | PKG QTY | CTN QTY | CTN WT. |
|-------|--------------------------------------|---------|---------|---------|
| 3536 | WRENCH TUBE 2.16"/2.44" X 84" YELLOW | 1 | 1 | 64 |

WRENCH TUBE ORANGE



Allied Bolt Products LLC

| PART# | DESCRIPTION | PKG QTY | CTN QTY | CTN WT. |
|-------|--------------------------------|---------|---------|---------|
| 3534 | WRENCH TUBE 2.16" X 84" ORANGE | 1 | 1 | 57 |

WRENCH TUBE RED



Allied Bolt Products LLC

| PART# | DESCRIPTION | PKG QTY | CTN QTY | CTN WT. |
|-------|-----------------------------|---------|---------|---------|
| 3538 | WRENCH TUBE 2.44" X 84" RED | 1 | 1 | 71 |