

**Cable Clips**



**SNAP STRIP**  
**SNAP STRIP**

PART#	DESCRIPTION	PKG QTY	CTN QTY	CTN WT.
1200	.210" SNAP STRIP	100	1	3
1201	.320" SNAP STRIP	100	1	3

**STRIP CLIP™**  
**STRIP CLIP™ (BLACK)**



PART#	DESCRIPTION	PKG QTY	CTN QTY	CTN WT.
1793	#12-14 (3MM) JACKETED GROUND WIRE STRIP CLIP™ WITH #8 X 1" SCREW (BLACK)	300	1	3
1798	#12-14 (3MM) JACKETED GROUND WIRE NYLON STRIP CLIP™ WITH .078" X 1" NAIL (BLACK)	300	1	2
1794	#10 (4MM) AWG JACKETED OR #6 UNJACKETED GROUND WIRE STRIP CLIP™ WITH #8 X 1" SCREW (BLACK)	300	1	28
1790	RG-6 (7MM) NYLON STRIP CLIP™ WITH #8 X 1" SCREW (BLACK)	300	1	4
1795	RG-6 (7MM) NYLON STRIP CLIP™ WITH .078" X 1" NAIL (BLACK)	300	1	7
1791	RG-6 (8MM) QUAD SHIELD NYLON STRIP CLIP™ WITH #8 X 1" SCREW (BLACK)	300	1	3
1796	RG-6 (8MM) QUAD SHIELD NYLON STRIP CLIP™ WITH .078" X 1" NAIL (BLACK)	300	1	7

**PLASTIC CABLE CLIP**  
**PLASTIC CABLE NAIL CLIP (BLACK)**



PART#	DESCRIPTION	PKG QTY	CTN QTY	CTN WT.
1910	#12-14 (3MM) AWG JACKETED GROUND WIRE PLASTIC CABLE CLIP WITH .078" X 1" NAIL (BLACK)	100	36	14
1770	#10 (4MM) AWG JACKETED OR #6 AWG UNJACKETED GROUND WIRE PLASTIC CABLE CLIP WITH .078" X 1" NAIL (BLACK)	100	36	10
1870	RG-59 (6MM) PLASTIC CABLE CLIP WITH .078" X 1" NAIL (BLACK)	100	36	7
1775	RG-6 (7MM) PLASTIC CABLE CLIP WITH .078" X 1" NAIL (BLACK)	100	36	18
1776	RG-6 (8MM) QUAD SHIELD PLASTIC CABLE CLIP WITH .078" X 1" NAIL (BLACK)	100	24	7
1900	RG-11 (10MM) PLASTIC CABLE CLIP WITH .078" X 1" NAIL (BLACK)	100	8	6
1869	RG-59 (6MM X 12MM) DUAL PLASTIC CABLE CLIP WITH .078" X 1" NAIL (BLACK)	100	16	6

**PLASTIC CABLE NAIL CLIP (WHITE)**



PART#	DESCRIPTION	PKG QTY	CTN QTY	CTN WT.
1911	#12-14 (3MM) AWG JACKETED GROUND WIRE PLASTIC CABLE CLIP WITH .078" X 1" NAIL (WHITE)	100	36	9
1771	#10 (4MM) AWG JACKETED OR #6 AWG UNJACKETED GROUND WIRE PLASTIC CABLE CLIP WITH .078" X 1" NAIL (WHITE)	100	36	10
1871	RG-59 (6MM) PLASTIC CABLE CLIP WITH .078" X 1" NAIL (WHITE)	100	36	12
1850	RG-6 (7MM) PLASTIC CABLE CLIP WITH .078" X 1" NAIL (WHITE)	100	36	18
1777	RG-6Q (8MM) QUAD SHIELD PLASTIC CABLE CLIP WITH .078" X 1" NAIL (WHITE)	100	24	9
1901	RG-11 (10MM) PLASTIC CABLE CLIP WITH .078" X 1" NAIL (WHITE)	100	8	6

**PLASTIC CABLE SCREW CLIP (BLACK)**



PART#	DESCRIPTION	PKG QTY	CTN QTY	CTN WT.
1909	#12-14 (3MM) AWG JACKETED GROUND WIRE PLASTIC CABLE CLIP WITH #8 X 1" SCREW (BLACK)	100	16	12
1750	RG-6 (7MM) PLASTIC CABLE CLIP WITH #8 X 1" SCREW (BLACK)	100	16	17
1752	RG-6 (8MM) QUAD SHIELD PLASTIC CABLE CLIP WITH #8 X 1" SCREW (BLACK)	100	16	16
1950	RG-6 (7MM X 14MM) DUAL PLASTIC CABLE CLIP WITH #8 X 1" SCREW (BLACK)	50	16	8



**PLASTIC CABLE SCREW CLIP (WHITE)**

PART#	DESCRIPTION	PKG QTY	CTN QTY	CTN WT.
1751	RG-6 (7MM) PLASTIC CABLE CLIP WITH #8 X 1" SCREW (WHITE)	100	16	15
1949	RG-6 (7MM X 14MM) DUAL PLASTIC CABLE CLIP WITH #8 X 1" SCREW (WHITE)	50	16	8

**SCREW CLIP AND DRIVE PIN CLIP (SCREWZIN CLIP™)**

**SCREW CLIP (Screwzin Clips™)**



PART#	DESCRIPTION	PKG QTY	CTN QTY	CTN WT.
1919	#12-14 AWG STEEL JACKETED GROUND WIRE SCREW CLIP BLACK (SCREWZIN CLIP™)	100	24	23
1920	RG-59 STEEL SCREW CLIP BLACK (SCREWZIN CLIP™)	100	8	14
1921	RG-6 STEEL SCREW CLIP BLACK (SCREWZIN CLIP™)	100	16	20
1923	RG-6 STEEL SCREW CLIP WHITE (SCREWZIN CLIP™)	100	16	28
1922	RG-6 QUAD SHIELD STEEL SCREW CLIP BLACK (SCREWZIN CLIP™)	100	16	18
1925	RG-11 STEEL SCREW CLIP BLACK (SCREWZIN CLIP™)	100	16	22

**DRIVE PIN CLIP (SCREWZIN CLIP™)**



PART#	DESCRIPTION	PKG QTY	CTN QTY	CTN WT.
1941	RG-6 DRIVE PIN CLIP BLACK (SCREWZIN CLIP™)	100	16	20
1945	RG-11 DRIVE PIN CLIP BLACK (SCREWZIN CLIP™)	100	8	11

**ALUMINUM U CABLE CLIP FOR COAXIAL CABLE**

**ALUMINUM U CABLE CLIP**



PART#	DESCRIPTION	PKG QTY	CTN QTY	CTN WT.
4063	#12-14 AWG JACKETED GROUND WIRE U CABLE CLIP	500	8	6
4060	RG-59 U CABLE CLIP	500	4	6
4057	RG-6 U CABLE CLIP	500	4	6
4061	RG-6Q QUAD SHIELD U CABLE CLIP	500	4	6
4062	RG-11 U CABLE CLIP	500	4	6

**STEEL NAIL CLIP FOR COAXIAL CABLE**

**STEEL NAIL CLIP FOR COAXIAL CABLE**



PART#	DESCRIPTION	PKG QTY	CTN QTY	CTN WT.
1875	RG-59 STEEL NAIL CLIP (1" NAIL)	100	16	10
1880	RG-6 STEEL NAIL CLIP (1" NAIL)	100	24	19
1890	RG-6 QUAD SHIELD STEEL NAIL CLIP (1" NAIL)	100	24	20
1895	RG-11 STEEL NAIL CLIP (1" NAIL)	100	16	22

**LEXAN CABLE CLIP**

**#12-14 AWG GROUND WIRE CLEAR LEXAN CABLE CLIP**



PART#	DESCRIPTION	PKG QTY	CTN QTY	CTN WT.
7114	#12-14 CLEAR LEXAN CABLE CLIP WITH ONE .78" PIN	100	16	11
7116	#12-14 CLEAR LEXAN CABLE CLIP WITH TWO .78" PINS	100	16	14

## Drop Attachment Hardware Catalog

September 23, 2024

### #12-14 AWG GROUND WIRE BLACK LEXAN CABLE CLIP



PART#	DESCRIPTION	PKG QTY	CTN QTY	CTN WT.
7111	#12-14 BLACK LEXAN CABLE CLIP WITH ONE .60" PIN	100	16	12
7106	#12-14 BLACK LEXAN CABLE CLIP WITH ONE .78" PIN	100	36	34
7117	#12-14 BLACK LEXAN CABLE CLIP WITH TWO .78" PINS	100	8	7

### RG-59 CLEAR LEXAN CABLE CLIP



PART#	DESCRIPTION	PKG QTY	CTN QTY	CTN WT.
7118	RG-59 CLEAR LEXAN CABLE CLIP WITH ONE .78" PIN	100	16	12
7120	RG-59 CLEAR LEXAN CABLE CLIP WITH TWO .78" PINS	100	8	6

### RG-59 BLACK LEXAN CABLE CLIP



PART#	DESCRIPTION	PKG QTY	CTN QTY	CTN WT.
7119	RG-59 BLACK LEXAN CABLE CLIP WITH ONE .78" PIN	100	16	10
7121	RG-59 BLACK LEXAN CABLE CLIP WITH TWO .78" PINS	100	8	6

### RG-6 CLEAR LEXAN CABLE CLIP



PART#	DESCRIPTION	PKG QTY	CTN QTY	CTN WT.
7126	RG-6 CLEAR LEXAN CABLE CLIP WITH ONE .78" PIN	100	16	10
7128	RG-6 CLEAR LEXAN CABLE CLIP WITH TWO .78" PINS	100	8	9

### RG-6 BLACK LEXAN CABLE CLIP



PART#	DESCRIPTION	PKG QTY	CTN QTY	CTN WT.
7107	RG-6 BLACK LEXAN CABLE CLIP WITH ONE .78" PIN	100	16	16
7104	RG-6 BLACK LEXAN CABLE CLIP WITH TWO .78" PINS	100	8	9
7100	RG-6 BLACK LEXAN CABLE CLIP WITH ONE 1" PIN	100	16	15

### RG-11 CLEAR LEXAN CABLE CLIP



PART#	DESCRIPTION	PKG QTY	CTN QTY	CTN WT.
7102	RG-11 CLEAR LEXAN CABLE CLIP WITH ONE .90" PIN	100	4	6
7133	RG-11 CLEAR LEXAN CABLE CLIP WITH TWO .90" PINS	100	4	7

## Drop Attachment Hardware Catalog

September 23, 2024

### RG-11 BLACK LEXAN CABLE CLIP



PART#	DESCRIPTION	PKG QTY	CTN QTY	CTN WT.
7134	RG-11 BLACK LEXAN CABLE CLIP WITH TWO .90" PINS	100	8	12
7136	RG-11 BLACK LEXAN CABLE CLIP WITH ONE 1.10" PIN	100	16	14

### RG-6 DUAL CLEAR LEXAN CABLE CLIP



PART#	DESCRIPTION	PKG QTY	CTN QTY	CTN WT.
7140	RG-6 DUAL CLEAR LEXAN CABLE CLIP WITH ONE .78" PIN	100	4	10

### RG-6 DUAL BLACK LEXAN CABLE CLIP



PART#	DESCRIPTION	PKG QTY	CTN QTY	CTN WT.
7141	RG-6 DUAL BLACK LEXAN CABLE CLIP WITH ONE .78" PIN	100	4	10

### B MASONRY CLIP

#### MASONRY CLIP (ROUND CABLE)



PART#	DESCRIPTION	PKG QTY	CTN QTY	CTN WT.
802	B1 MASONRY CLIP	10	600	12
803	B2 MASONRY CLIP	10	50	8
804	B3 MASONRY CLIP	10	200	5
806	4 PAIR DROP WIRE CLIP	10	200	18

#### MASONRY CLIP (FLAT CABLE)



PART#	DESCRIPTION	PKG QTY	CTN QTY	CTN WT.
805	2 PAIR DROP WIRE CLIP	10	200	18

### PLASTIC U CABLE CLIP

#### PLASTIC U CABLE CLIP IVORY



PART#	DESCRIPTION	PKG QTY	CTN QTY	CTN WT.
1032	1/4" PLASTIC U CABLE CLIP IVORY	100	16	5
1034	3/8" PLASTIC U CABLE CLIP IVORY	100	16	3
1035	7/16" PLASTIC U CABLE CLIP IVORY	100	16	2
1036	1/2" PLASTIC U CABLE CLIP IVORY	100	16	5
1037	9/16" PLASTIC U CABLE CLIP IVORY	100	8	3
1038	5/8" PLASTIC U CABLE CLIP IVORY	100	8	3

PLASTIC U CABLE CLIP BLACK



PART#	DESCRIPTION	PKG QTY	CTN QTY	CTN WT.
1032B	1/4" PLASTIC U CABLE CLIP BLACK	100	16	5
1036B	1/2" PLASTIC U CABLE CLIP BLACK	100	16	5
1041	7/8" PLASTIC U CABLE CLIP BLACK	100	4	1

Cable Clamps

CABLE CLASPS



PART#	DESCRIPTION	PKG QTY	CTN QTY	CTN WT.
9004-14	3-1/8" CABLE CLASP	100	16	4

ONE HOLE CLAMP



ONE HOLE CLAMP

PART#	DESCRIPTION	PKG QTY	CTN QTY	CTN WT.
9000-3	3/16" ONE HOLE CLAMP	500	8	21
9000-4	1/4" ONE HOLE CLAMP	500	4	12
9000-5	5/16" ONE HOLE CLAMP	500	4	15
9000-6	3/8" ONE HOLE CLAMP	500	4	20
9000-7	7/16" ONE HOLE CLAMP	500	4	23
9000-8	1/2" ONE HOLE CLAMP	250	4	14
9000-9	9/16" ONE HOLE CLAMP	100	16	22
9000-10	5/8" ONE HOLE CLAMP	50	16	13
9000-12	3/4" ONE HOLE CLAMP	100	4	15
9000-16	1" ONE HOLE CLAMP	50	4	8
9000-18	1-1/8" ONE HOLE CLAMP	50	4	17
9000-20	1-1/4" ONE HOLE CLAMP	25	4	9

TWO HOLE CLAMP



TWO HOLE CABLE CLAMP

PART#	DESCRIPTION	PKG QTY	CTN QTY	CTN WT.
9000-70	7/16" TWO HOLE CABLE CLAMP	100	8	13
9000-100	5/8" TWO HOLE CABLE CLAMP	50	16	18
9000-110	11/16" TWO HOLE CABLE CLAMP	50	4	14
9000-120	3/4" TWO HOLE CABLE CLAMP	50	4	15
9000-140	7/8" TWO HOLE CABLE CLAMP	50	4	10
9000-160	1" TWO HOLE CABLE CLAMP	50	4	22
9000-180	1-1/8" TWO HOLE CABLE CLAMP	50	4	18
9000-200	1-1/4" TWO HOLE CABLE CLAMP	25	4	15
9000-240	1-1/2" TWO HOLE CABLE CLAMP	25	4	8
9000-260	1-5/8" TWO HOLE CABLE CLAMP	100	1	18
9000-300	1-7/8" TWO HOLE CABLE CLAMP	25	4	20
9000-360	2-1/4" TWO HOLE CABLE CLAMP	25	1	7
9000-400	2-1/2" TWO HOLE CABLE CLAMP	25	1	8
9000-420	2-5/8" TWO HOLE CABLE CLAMP	25	1	9
9000-560	3-1/2" TWO HOLE CABLE CLAMP	25	1	12

**CABLE CLAMP**

**CABLE CLAMP GALVANIZED**



PART#	DESCRIPTION	PKG QTY	CTN QTY	CTN WT.
9002-1	CABLE CLAMP SIZE 1 (.10 TO .15")	10	200	6
9002-3	CABLE CLAMP SIZE 3 (.16 TO .24")	50	80	14
9002-4	CABLE CLAMP SIZE 4 (.25 TO .33")	50	40	14
9002-6	CABLE CLAMP SIZE 6 (.34 TO .43")	50	40	14
9002-8	CABLE CLAMP SIZE 8 (.53 TO .60")	50	16	15
9002-10	CABLE CLAMP SIZE 10 (.61 TO .72")	25	32	15
9002-13	CABLE CLAMP SIZE 13 (.71 TO .93")	20	16	12
9002-17	CABLE CLAMP SIZE 17 (.94 TO 1.20")	25	8	12
9002-21	CABLE CLAMP SIZE 21 (1.21 TO 1.45")	10	16	19
9002-30	CABLE CLAMP SIZE 30 (1.71 TO 2")	10	8	12
9002-35	CABLE CLAMP SIZE 35 (2.01 TO 2.40")	10	4	8

**CABLE CLAMP OLIVE**



PART#	DESCRIPTION	PKG QTY	CTN QTY	CTN WT.
9002-1OLIVE	CABLE CLAMP SIZE 1 OLIVE (.10 TO .15")	100	32	9
9002-3OLIVE	CABLE CLAMP SIZE 3 OLIVE (.16 TO .24")	50	40	10
9002-4OLIVE	CABLE CLAMP SIZE 4 OLIVE (.25 TO .33")	50	40	14
9002-6OLIVE	CABLE CLAMP SIZE 6 OLIVE (.34 TO .43")	50	40	15
9002-8OLIVE	CABLE CLAMP SIZE 8 OLIVE (.53 TO .60")	50	16	15
9002-10OLIVE	CABLE CLAMP SIZE 10 OLIVE (.61 TO .72")	25	32	15
9002-13OLIVE	CABLE CLAMP SIZE 13 OLIVE (.71 TO .93")	20	16	12

**CABLE CLAMP BEIGE**



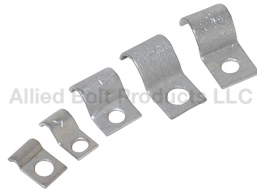
PART#	DESCRIPTION	PKG QTY	CTN QTY	CTN WT.
9002-1BEIGE	CABLE CLAMP SIZE 1 BEIGE (.10 TO .15")	100	40	9
9002-3BEIGE	CABLE CLAMP SIZE 3 BEIGE (.16 TO .24")	50	40	10
9002-4BEIGE	CABLE CLAMP SIZE 4 BEIGE (.25 TO .33")	50	40	14
9002-6BEIGE	CABLE CLAMP SIZE 6 BEIGE (.34 TO .43")	50	40	15
9002-8BEIGE	CABLE CLAMP SIZE 8 BEIGE (.53 TO .60")	50	16	15
9002-10BEIGE	CABLE CLAMP SIZE 10 BEIGE (.61 TO .72")	25	32	15
9002-13BEIGE	CABLE CLAMP SIZE 13 BEIGE (.71 TO .93")	20	16	12

**TWO HOLE STRAP**

**TWO HOLE STRAP**



PART#	DESCRIPTION	PKG QTY	CTN QTY	CTN WT.
9003-9	STRAP CABLE SIZE 9 FOR 9/16" CABLE	25	32	13
9003-11	STRAP CABLE SIZE 11 FOR 11/16" CABLE	25	16	8
9003-13	STRAP CABLE SIZE 13 FOR 13/16" CABLE	25	16	11
9003-16	STRAP CABLE SIZE 16 FOR 1" CABLE	25	8	16
9003-20	STRAP CABLE SIZE 20 FOR 1-1/4" CABLE	25	4	6
9003-24	STRAP CABLE SIZE 24 FOR 1-1/2" CABLE	25	4	8
9003-30	STRAP CABLE SIZE 30 FOR 1-7/8" CABLE	25	4	16
9003-36	STRAP CABLE SIZE 36 FOR 2-1/4" CABLE	25	1	4
9003-42	STRAP CABLE SIZE 42 FOR 2-5/8" CABLE	25	1	5
9003-56	STRAP CABLE SIZE 56 FOR 3-1/2" CABLE	25	1	6
9003-64	STRAP CABLE SIZE 64 FOR 4" CABLE	25	1	6



**ONE HOLE OFFSET CLAMP**

**ONE HOLE OFFSET CLAMP**

PART#	DESCRIPTION	PKG QTY	CTN QTY	CTN WT.
9020	5/32"-7/32" ONE HOLE OFFSET CLAMP	500	16	24
9021	1/4"-5/16" ONE HOLE OFFSET CLAMP	500	4	27
9022	5/16"-3/8" ONE HOLE OFFSET CLAMP	500	4	22
9024	3/8"-1/2" ONE HOLE OFFSET CLAMP	500	4	25
9023	1/2"-9/16" ONE HOLE OFFSET CLAMP	500	1	5



**S PIPE STRAP**

**S PIPE STRAP**

PART#	DESCRIPTION	PKG QTY	CTN QTY	CTN WT.
769	3" S PIPE STRAP	25	1	26
744	3-1/2" S PIPE STRAP	25	1	26
770	4" S PIPE STRAP	25	1	35
771	4-1/2" S PIPE STRAP	25	1	40



**DUAL CABLE CLAMP**

PART#	DESCRIPTION	PKG QTY	CTN QTY	CTN WT.
9051	DUAL CABLE CLAMP	500	4	23



**ONE HOLE CONDUIT CLAMP**

**ONE HOLE CONDUIT CLAMP**

PART#	DESCRIPTION	PKG QTY	CTN QTY	CTN WT.
9007-3	3/8" ONE HOLE CONDUIT CLAMP RIGID	500	1	13
9007-5	1/2" ONE HOLE CONDUIT CLAMP RIGID	250	1	25
9007-6	3/4" ONE HOLE CONDUIT CLAMP EMT	100	4	25
9007-7	3/4" ONE HOLE CONDUIT CLAMP RIGID	100	4	25
9007-8	1" ONE HOLE CONDUIT CLAMP EMT	50	4	13
9007-9	1" ONE HOLE CONDUIT CLAMP RIGID	50	1	6
9007-10	1-1/4" ONE HOLE CONDUIT CLAMP EMT	25	4	11
9007-11	1-1/4" ONE HOLE CONDUIT CLAMP RIGID	25	4	11
9007-12	1-1/2" ONE HOLE CONDUIT CLAMP EMT	25	4	19
9007-13	1-1/2" ONE HOLE CONDUIT CLAMP RIGID	25	4	19
9007-14	2" ONE HOLE CONDUIT CLAMP EMT	25	1	9
9007-15	2" ONE HOLE CONDUIT CLAMP RIGID	25	1	9

**TWO HOLE CONDUIT CLAMP**

**TWO HOLE CONDUIT CLAMP**



PART#	DESCRIPTION	PKG QTY	CTN QTY	CTN WT.
9008-2	1/2" TWO HOLE CONDUIT CLAMP RIGID	500	1	30
9008-3	3/4" TWO HOLE CONDUIT CLAMP EMT	100	4	15
9008-4	3/4" TWO HOLE CONDUIT CLAMP RIGID	250	1	18
9008-5	1" TWO HOLE CONDUIT CLAMP EMT	250	1	21
9008-7	1-1/4" TWO HOLE CONDUIT CLAMP EMT	100	1	18
9008-8	1-1/4" TWO HOLE CONDUIT CLAMP RIGID	50	4	36
9008-9	1-1/2" TWO HOLE CONDUIT CLAMP EMT	50	4	36
9008-10	1-1/2" TWO HOLE CONDUIT CLAMP RIGID	25	4	20
9008-13	2-1/2" TWO HOLE CONDUIT CLAMP EMT & RIGID	25	1	8
9008-14	3" TWO HOLE CONDUIT CLAMP EMT & RIGID	25	1	9
9008-16	4" TWO HOLE CONDUIT CLAMP EMT & RIGID	25	1	12

**NEOPRENE DIPPED CLAMP**

**WRAP AROUND NEOPRENE DIPPED CLAMP**



PART#	DESCRIPTION	PKG QTY	CTN QTY	CTN WT.
4060N	RG-59 WRAP AROUND NEOPRENE DIPPED CLAMP	1000	1	8
4059	RG-6 WRAP AROUND NEOPRENE DIPPED CLAMP	1000	1	11
4070	1/2" WRAP AROUND NEOPRENE DIPPED CLAMP	1000	1	16
4068	5/8" WRAP AROUND NEOPRENE DIPPED CLAMP	1000	1	17
4072	3/4" WRAP AROUND NEOPRENE DIPPED CLAMP	100	1	5

**ONE HOLE NEOPRENE DIPPED CLAMP**



PART#	DESCRIPTION	PKG QTY	CTN QTY	CTN WT.
4066	1/2" ONE HOLE NEOPRENE DIPPED CLAMP	1000	1	24
4067	5/8" ONE HOLE NEOPRENE DIPPED CLAMP	100	1	3
4071	3/4" ONE HOLE NEOPRENE DIPPED CLAMP	1000	1	36

**E DROP WIRE CLAMP**

**E DROP WIRE CLAMP WITH RIBS**



PART#	DESCRIPTION	PKG QTY	CTN QTY	CTN WT.
9085	1 PAIR E DROP WIRE CLAMP WITH RIBS	50	16	9
9086	2 PAIR E DROP WIRE CLAMP WITH RIBS	50	16	13

**E DROP WIRE CLAMP WITHOUT RIBS**



PART#	DESCRIPTION	PKG QTY	CTN QTY	CTN WT.
9087	6 PAIR E DROP WIRE CLAMP WITHOUT RIBS	50	16	12





## Drop Attachment Hardware Catalog

September 23, 2024

### CATV DROP WIRE CLIP WITHOUT RIBS



PART#	DESCRIPTION	PKG QTY	CTN QTY	CTN WT.
9052	CATV DROP WIRE CLIP WITHOUT RIBS	250	4	5

### UNIVERSAL E DROP WIRE CLAMP

#### E DROP WIRE CLAMP



PART#	DESCRIPTION	PKG QTY	CTN QTY	CTN WT.
9088	UNIVERSAL E DROP WIRE CLAMP	50	16	8

## Mast Attachments

### MAST STRAP



PART#	DESCRIPTION	PKG QTY	CTN QTY	CTN WT.
4016	MAST STRAP	50	1	10

### DROP WIRE MAST BRACKET

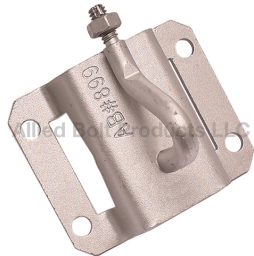


PART#	DESCRIPTION	PKG QTY	CTN QTY	CTN WT.
7022	DROP WIRE MAST BRACKET	50	1	25

## House Attachments

### FIBER OPTIC UNIVERSAL DROP ATTACHMENT BRACKET

#### FIBER OPTIC UNIVERSAL DROP ATTACHMENT BRACKET



PART#	DESCRIPTION	PKG QTY	CTN QTY	CTN WT.
899	FIBER OPTIC UNIVERSAL DROP ATTACHMENT BRACKET	50	1	13

## Drop Attachment Hardware Catalog

September 23, 2024



Allied Bolt Products LLC

### FEED THRU BUSHING FEED THRU BUSHING BLACK

PART#	DESCRIPTION	PKG QTY	CTN QTY	CTN WT.
864	RG-6 FEED THRU BUSHING BLACK	100	4	4



Allied Bolt Products LLC

### FEED THRU BUSHING IVORY

PART#	DESCRIPTION	PKG QTY	CTN QTY	CTN WT.
865	RG-6 FEED THRU BUSHING IVORY	100	1	1



Allied Bolt Products LLC

### SIZE 13 DISTRIBUTION RING SIZE 13 DISTRIBUTION RING

PART#	DESCRIPTION	PKG QTY	CTN QTY	CTN WT.
9056	SIZE 13A DISTRIBUTION RING	100	1	12
9057	SIZE 13B DISTRIBUTION RING	50	1	8
9058	SIZE 13C DISTRIBUTION RING	50	1	9



Allied Bolt Products LLC

### SIZE 17 DISTRIBUTION RING SIZE 17 DISTRIBUTION RING

PART#	DESCRIPTION	PKG QTY	CTN QTY	CTN WT.
9059	SIZE 17A DISTRIBUTION RING	100	1	10
9060	SIZE 17B DISTRIBUTION RING	50	1	4
9061	SIZE 17C DISTRIBUTION RING	50	1	5



Allied Bolt Products LLC

### SIDING CLIP HORIZONTAL SIDING CLIP

PART#	DESCRIPTION	PKG QTY	CTN QTY	CTN WT.
872	HORIZONTAL SIDING CLIP (BLACK)	100	16	3



Allied Bolt Products LLC

### VERTICAL SIDING CLIP

PART#	DESCRIPTION	PKG QTY	CTN QTY	CTN WT.
873	VERTICAL SIDING CLIP (BLACK)	100	4	2

**B DROP WIRE HOOK (RAM'S HORN)**



PART#	DESCRIPTION	PKG QTY	CTN QTY	CTN WT.
666	B DROP WIRE HOOK (RAM'S HORN)	50	4	15

**ANGLE SCREW**



**ANGLE SCREW**

PART#	DESCRIPTION	PKG QTY	CTN QTY	CTN WT.
373	5/16" ANGLE SCREW	10	16	16
442	3/8" ANGLE SCREW	10	4	8

**PORCELAIN KNOB**



**TYPE C PORCELAIN KNOB**

PART#	DESCRIPTION	PKG QTY	CTN QTY	CTN WT.
969	TYPE C PORCELAIN KNOB	25	1	2

**PREMIUM TYPE C PORCELAIN KNOB**



PART#	DESCRIPTION	PKG QTY	CTN QTY	CTN WT.
961	PREMIUM TYPE C PORCELAIN KNOB	25	1	2

**TYPE S PORCELAIN KNOB**



PART#	DESCRIPTION	PKG QTY	CTN QTY	CTN WT.
970	TYPE S PORCELAIN KNOB	10	1	3

**TYPE T PORCELAIN KNOB**



PART#	DESCRIPTION	PKG QTY	CTN QTY	CTN WT.
971	TYPE T PORCELAIN KNOB	25	1	8

## Drop Attachment Hardware Catalog

September 23, 2024

### MULTI-DROP HOUSE HOOK



PART#	DESCRIPTION	PKG QTY	CTN QTY	CTN WT.
9082	MULTI-DROP HOUSE HOOK	250	1	33

### CATV HOUSE ATTACHMENT



FRONT

SIDE

PART#	DESCRIPTION	PKG QTY	CTN QTY	CTN WT.
891	CATV HOUSE ATTACHMENT	100	1	6

### P HOUSE HOOK

#### P HOUSE HOOK



PART#	DESCRIPTION	PKG QTY	CTN QTY	CTN WT.
921	3/16" x 3-3/4" P HOUSE HOOK	200	1	13
922	3/16" x 4-1/2" P HOUSE HOOK	200	1	15
924	1/4" x 4-1/2" P HOUSE HOOK	200	1	20
945	3/8" x 5-1/2" P HOUSE HOOK	100	1	25

### WRENCHABLE P HOUSE HOOK

#### WRENCHABLE P HOUSE HOOK



PART#	DESCRIPTION	PKG QTY	CTN QTY	CTN WT.
937	1/4" x 3-3/4" WRENCHABLE P HOUSE HOOK	200	1	13
938	1/4" x 4-1/2" WRENCHABLE P HOUSE HOOK	200	1	15

### INSULATED SCREW EYE

#### INSULATED SCREW EYE



PART#	DESCRIPTION	PKG QTY	CTN QTY	CTN WT.
99	5/8" LONG INSULATED SCREW EYE	10	20	23
100	5/8" S INSULATED SCREW EYE	10	20	15

### DRIVE RING

#### DRIVE RING



PART#	DESCRIPTION	PKG QTY	CTN QTY	CTN WT.
4003	1/2" DRIVE RING	50	16	14
4005	5/8" DRIVE RING	25	16	13
4004	7/8" DRIVE RING	25	8	12
4002	1-1/4" DRIVE RING	25	4	9
5038	5/8" L DRIVE RING	25	16	14
5039	7/8" L DRIVE RING	25	8	12
5040	1-1/4" L DRIVE RING	25	4	11

**C WIRE LOOP**

**C WIRE LOOP PACKS**



PART#	DESCRIPTION	PKG QTY	CTN QTY	CTN WT.
352	1/2" C WIRE LOOP	12	100	14
353	5/8" C WIRE LOOP	12	50	11
351	7/8" C WIRE LOOP	12	50	28
354	1-1/4" C WIRE LOOP	12	8	4

**C WIRE LOOP BOXES**



PART#	DESCRIPTION	PKG QTY	CTN QTY	CTN WT.
35200	1/2" C WIRE LOOP	100	16	17
35300	5/8" C WIRE LOOP	100	8	12
35100	7/8" C WIRE LOOP	100	4	19
35400	1-1/4" C WIRE LOOP	100	1	5

**BRINDLE RING**

**BRIDLE RING**



PART#	DESCRIPTION	PKG QTY	CTN QTY	CTN WT.
911	7/8" C BRIDLE RING	25	16	17
912	1-1/4" C BRIDLE RING	25	16	26
913	1-5/8" C BRIDLE RING	25	4	10
917A	1-5/8" A BRIDLE RING	25	4	10
914	3" C BRIDLE RING	25	1	6
917	3/4" K BRIDLE RING	25	16	12
915	1-1/4" M BRIDLE RING	25	16	16
919	1-1/4" B BRIDLE RING	25	16	12
916	1-5/8" R BRIDLE RING	25	4	11
948	1-3/4" P BRIDLE RING	25	4	11

**CORNER WALL BRACKET**

**CORNER WALL BRACKET**



PART#	DESCRIPTION	PKG QTY	CTN QTY	CTN WT.	
10052	CORNER WALL BRACKET W/ RETAINING WASHER		100	1	40

**HOUSE BRACKET**



PART#	DESCRIPTION	PKG QTY	CTN QTY	CTN WT.
10057	HOUSE BRACKET	50	1	33



**Drop Attachment Hardware Catalog**

September 23, 2024

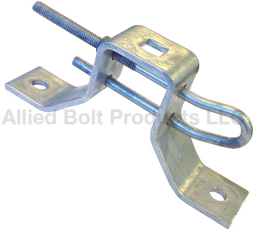


PITCH PATCH KIT

PITCH PATCH KIT

PART#	DESCRIPTION	PKG QTY	CTN QTY	CTN WT.
6851	PITCH PATCH KIT	6	200	11
6850	PITCH PATCH KIT W/ SCREWS	1	50	10

Allied Bolt Products LLC



DEADEND BRACKET WITH HOOK

DEADEND TENSIONER BRACKET

PART#	DESCRIPTION	PKG QTY	CTN QTY	CTN WT.
8422	DEADEND TENSIONER BRACKET	10	1	8

Allied Bolt Products LLC