

Drop Clamp for Copper Twisted Pair Drop Cables



1-2 PAIR DROP WIRE CLAMP
1-2 PAIR DROP WIRE CLAMP

PART#	DESCRIPTION	PKG QTY	CTN QTY	CTN WT.
903	1-2 ALUMINUM DROP WIRE CLAMP WITH SERRATED SHIM	25	20	33
909	1-2 PAIR DROP WIRE CLAMP STAINLESS WITH SERRATED SHIM	25	20	47
902	1-2 PAIR STAINLESS STEEL DROP WIRE CLAMP STAINLESS SERRATED SHIM	50	8	37
907N	1-2 PAIR STAINLESS STEEL DROP WIRE CLAMP WITH NEOPRENE SHIM	50	8	37
907D	1-2 PAIR STAINLESS STEEL DROP WIRE CLAMP WITH DIMPLED SHIM	50	8	38



SIX PAIR DROP WIRE CLAMP
SIX PAIR DROP WIRE CLAMP

PART#	DESCRIPTION	PKG QTY	CTN QTY	CTN WT.
960	SIX PAIR ALUMINUM DROP WIRE CLAMP WITH DIMPLED SHIM	2	25	6
963	SIX PAIR STAINLESS STEEL DROP WIRE CLAMP WITH DIMPLED SHIM	2	25	9
959	SIX PAIR STAINLESS STEEL DROP WIRE WITH CLAMP HEAVY SERRATED SHIM	2	25	10

Drop Clamp For Fiber Drop Cables



DROP CLAMP FOR ROUND FIBER OPTIC CABLE
DROP CLAMP FOR ROUND FIBER OPTIC CABLE

PART#	DESCRIPTION	PKG QTY	CTN QTY	CTN WT.
904	DROP CLAMP FOR ROUND FIBER OPTIC CABLE	25	20	47



UNIVERSAL THREE PIECE FIBER DROP CLAMP
Universal Fiber Drop Clamp

PART#	DESCRIPTION	PKG QTY	CTN QTY	CTN WT.
906	UNIVERSAL THREE PIECE FIBER DROP CLAMP	25	20	47



FIBER DROP CLAMP WITH CUSTOM SHIM
FIBER DROP CLAMP WITH CUSTOM SHIM

PART#	DESCRIPTION	PKG QTY	CTN QTY	CTN WT.
910	FIBER DROP CLAMP WITH CUSTOM SHIM	25	20	47



Allied Bolt Products LLC

BLACK FIBER DROP CLAMP WITH CUSTOM SHIM

PART#	DESCRIPTION	PKG QTY	CTN QTY	CTN WT.
910B	BLACK FIBER DROP CLAMP WITH CUSTOM SHIM	25	20	47

Drop Clamp for Coaxial Cable



Allied Bolt Products LLC

CATV DROP WIRE CLAMP

CATV DROP WIRE CLAMP

PART#	DESCRIPTION	PKG QTY	CTN QTY	CTN WT.
2100	CATV DROP WIRE CLAMP	2	25	6
1999	CATV DROP WIRE CLAMP W/LONG BAIL	50	1	4

Economy CATV Drop Wire Clamp



Allied Bolt Products LLC

PART#	DESCRIPTION	PKG QTY	CTN QTY	CTN WT.
2098	ECONOMY CATV DROP WIRE CLAMP	50	1	3

Insulated CATV Drop Wire Clamp



Allied Bolt Products LLC

INSULATED DROP WIRE CLAMP

PART#	DESCRIPTION	PKG QTY	CTN QTY	CTN WT.



Allied Bolt Products LLC

MESSENGER GRIP DROP CLAMPS

PART#	DESCRIPTION	PKG QTY	CTN QTY	CTN WT.
2002	MESSENGER GRIP DROP CLAMP	25	1	8

Dead-End Clamps for ADSS Fiber Cables



LONG SPAN ROC™ FIBER DEAD-END CLAMP

LONG SPAN ROC™ FIBER DEAD-END CLAMP

PART#	DESCRIPTION	PKG QTY	CTN QTY	CTN WT.
2106	LONG SPAN ROC™ FIBER DEAD-END CLAMP	100	1	18



RPX RIBBON DEADEND CLAMP

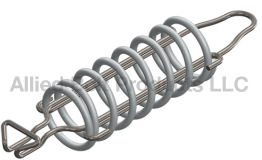
PART#	DESCRIPTION	PKG QTY	CTN QTY	CTN WT.
10085	RPX FIBER RIBBON DEADEND CLAMP	25	2	13



LONG SPAN SST™ FIBER DEAD-END CLAMP

PART#	DESCRIPTION	PKG QTY	CTN QTY	CTN WT.
2107	LONG SPAN SST™ FIBER DEAD-END CLAMP	50	1	37

Strain Relief Compression Spring



STRAIN RELIEF COMPRESSION SPRING

STRAIN RELIEF COMPRESSION SPRING

PART#	DESCRIPTION	PKG QTY	CTN QTY	CTN WT.
4902	STRAIN RELIEF COMPRESSION SPRING	50	1	60

Lashing Clamps



D CABLE LASHING CLAMP

D CABLE LASHING CLAMP

PART#	DESCRIPTION	PKG QTY	CTN QTY	CTN WT.
4040	D CABLE LASHING CLAMP	50	4	30

D CABLE LASHING CLAMP STAINLESS STEEL

D CABLE LASHING CLAMP STAINLESS STEEL



PART#	DESCRIPTION	PKG QTY	CTN QTY	CTN WT.
4000	D CABLE LASHING CLAMP STAINLESS STEEL	50	4	30

E CABLE LASHING CLAMP

E CABLE LASHING CLAMP



PART#	DESCRIPTION	PKG QTY	CTN QTY	CTN WT.
9053	E CABLE LASHING CLAMP	50	4	23

Lashing Wire

LASHING WIRE COIL

LASHING WIRE COIL



PART#	DESCRIPTION	PKG QTY	CTN QTY	CTN WT.
2616	.038" LASHING WIRE COIL 302SS 1600' PER COIL	1	6	38
2615	.045" LASHING WIRE COIL 302SS 1200' PER COIL	1	6	40
2617	.045" LASHING WIRE COIL 430SS 1200' PER COIL	1	6	40
2618	.045" LASHING WIRE COIL 316SS 1200' PER COIL	1	6	40

Fiber Storage Snowshoe For Strand

FIBER STORAGE SNOWSHOE FOR STRAND

Fiber Storage Snowshoe For Strand



PART#	DESCRIPTION	PKG QTY	CTN QTY	CTN WT.
9900-10	10" FIBER STORAGE SNOWSHOE FOR STRAND (CHANNEL WIDTH .65")	2	1	6
9900-12	12" FIBER STORAGE SNOWSHOE FOR STRAND (CHANNEL WIDTH .65")	2	1	6
9900-12W	12" FIBER STORAGE SNOWSHOE FOR STRAND (CHANNEL WIDTH 1.25")	2	1	7
9900-16	16" FIBER STORAGE SNOWSHOE FOR STRAND (CHANNEL WIDTH .90")	2	1	8
9900-16W	16" FIBER STORAGE SNOWSHOE FOR STRAND (CHANNEL WIDTH 1.5")	2	1	9
9900-18	18" FIBER STORAGE SNOWSHOE FOR STRAND (CHANNEL WIDTH .90")	2	1	9
9900-18W	18" FIBER STORAGE SNOWSHOE FOR STRAND (CHANNEL WIDTH 1.75")	2	1	10
9900-20	20" FIBER STORAGE SNOWSHOE FOR STRAND (CHANNEL WIDTH 1.25")	2	1	9
9900-24	24" FIBER STORAGE SNOWSHOE FOR STRAND (CHANNEL WIDTH 1.25")	2	1	10
9900-30	30" FIBER STORAGE SNOWSHOE FOR STRAND (CHANNEL WIDTH 1.25")	2	1	12

Span Clamps

E SPAN CLAMP

E SPAN CLAMP



PART#	DESCRIPTION	PKG QTY	CTN QTY	CTN WT.
9055	E SPAN CLAMP	5	20	45



Allied Bolt Products LLC

Q SPAN CLAMP

PART#	DESCRIPTION	PKG QTY	CTN QTY	CTN WT.
4042	Q SPAN CLAMP	25	4	17



Allied Bolt Products LLC

FIGURE 8 SPAN CLAMP

FIGURE 8 SPAN CLAMP

PART#	DESCRIPTION	PKG QTY	CTN QTY	CTN WT.
7024	FIGURE 8 SPAN CLAMP (.148"-.250")	50	1	14



Allied Bolt Products LLC

MULTI-DROP SPAN CLAMP

PART#	DESCRIPTION	PKG QTY	CTN QTY	CTN WT.
9080	MULTI-DROP SPAN CLAMP	25	4	17



Allied Bolt Products LLC

RAM'S HORN SPAN CLAMP

Ram's Horn Span Clamp

PART#	DESCRIPTION	PKG QTY	CTN QTY	CTN WT.
9996	RAM'S HORN SPAN CLAMP	50	1	16



Allied Bolt Products LLC

ALUMINUM PLATE RAM HORN SPAN CLAMP

ALUMINUM PLATE RAM HORN SPAN CLAMP

PART#	DESCRIPTION	PKG QTY	CTN QTY	CTN WT.
4045	ALUMINUM PLATE RAM HORN SPAN CLAMP	200	1	36

Figure 8 Drop Wire (Self-Supporting Drop Wire) Hardware



Allied Bolt Products LLC

SUPPORT WIRE DEADEND

SUPPORT WIRE DEADEND

PART#	DESCRIPTION	PKG QTY	CTN QTY	CTN WT.
AB505600	0.062" - 0.100" SUPPORT WIRE DEADEND	50	1	4
AB505800	0.091" - 0.114" SUPPORT WIRE DEADEND	50	1	4
AB506200	0.120" - 0.135" SUPPORT WIRE DEADEND	50	1	9
AB519900	0.140" - 0.215" SUPPORT WIRE DEADEND	50	1	21



SUPPORT WIRE SPLICE
SUPPORT WIRE SPLICE

PART#	DESCRIPTION	PKG QTY	CTN QTY	CTN WT.
AB505700	SUPPORT WIRE SPLICE 0.062" - 0.100"	50	1	1
AB505900	SUPPORT WIRE SPLICE 0.091" - 0.114"	50	1	6
AB506300	SUPPORT WIRE SPLICE 0.120" - 0.135"	50	1	6
AB503900	SUPPORT WIRE SPLICE 0.140" - 0.215"	50	1	21

Drop Wire 'S' Clips



S WIRE CLIP
S WIRE CLIP FOR MESSENGERED COAXIAL CABLE

PART#	DESCRIPTION	PKG QTY	CTN QTY	CTN WT.
905	S WIRE CLIP FOR MESSENGERED COAXIAL CABLE	100	8	5



SC WIRE CLIP
SC WIRE CLIP

PART#	DESCRIPTION	PKG QTY	CTN QTY	CTN WT.
905P	SC WIRE CLIP FOR 1-2 PAIR DROP WIRE	25	25	5
908	SC WIRE CLIP FOR 6 PAIR DROP WIRE	25	16	4

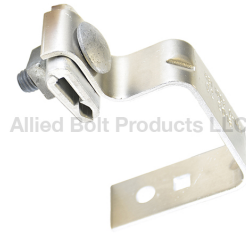
Aerial Cable Damper



ALUMINUM CABLE DAMPER
ALUMINUM CABLE DAMPER

PART#	DESCRIPTION	PKG QTY	CTN QTY	CTN WT.
9081	ALUMINUM CABLE DAMPER	1	1	4

Hangers



Single Tap Bracket
ALUMINUM TAP BRACKET

PART#	DESCRIPTION	PKG QTY	CTN QTY	CTN WT.
1003	2-1/2" TAP BRACKET	50	1	10



STEEL TAP BRACKET

PART#	DESCRIPTION	PKG QTY	CTN QTY	CTN WT.
1015	2-1/2" STEEL TAP BRACKET	50	1	18

Allied Bolt Products LLC



ADJUSTABLE TAP BRACKET

PART#	DESCRIPTION	PKG QTY	CTN QTY	CTN WT.
1708	ADJUSTABLE TAP BRACKET	100	1	23

Allied Bolt Products LLC



ENCLOSURE MOUNTING KIT

PART#	DESCRIPTION	PKG QTY	CTN QTY	CTN WT.
2000	ENCLOSURE MOUNTING KIT	1	4	7

Allied Bolt Products LLC

Lashing Straps

ABSTRAP™ LASHING STRAP SYSTEM

ABSTRAP™ WITH BUCKLE



PART#	DESCRIPTION	PKG QTY	CTN QTY	CTN WT.
1086	10" ABSTRAP™ WITH BUCKLE	50	20	27
1070	13-1/2" ABSTRAP™ WITH BUCKLE	50	20	29
1085	16" ABSTRAP™ WITH BUCKLE	50	10	32
1087	22" ABSTRAP™ WITH BUCKLE	25	16	13
1071	27" ABSTRAP™ WITH BUCKLE	25	20	24
1088	40" ABSTRAP™ WITH BUCKLE	25	16	22

Allied Bolt Products LLC

ABSTRAP™ BUCKLE



PART#	DESCRIPTION	PKG QTY	CTN QTY	CTN WT.
1072	ABSTRAP™ BUCKLE	25	20	8

Allied Bolt Products LLC



ABSTRAP™ TENSIONING TOOL



PART#	DESCRIPTION	PKG QTY	CTN QTY	CTN WT.
1073	ABSTRAP™ TENSIONING TOOL	1	1	1

ABSTRAP™ STACKABLE SPACER



PART#	DESCRIPTION	PKG QTY	CTN QTY	CTN WT.
1074	ABSTRAP™ STACKABLE SPACER	100	5	10

50' ABSTRAP™ REEL WITHOUT BUCKLE



PART#	DESCRIPTION	PKG QTY	CTN QTY	CTN WT.
1075	50' ABSTRAP™ REEL WITHOUT BUCKLE	10	1	9

VERTICAL STEEL BASE FOR ABSTRAP™



PART#	DESCRIPTION	PKG QTY	CTN QTY	CTN WT.
1081	VERTICAL STEEL BASE FOR ABSTRAP™	50	16	20

HORIZONTAL STEEL BASE FOR ABSTRAP™



PART#	DESCRIPTION	PKG QTY	CTN QTY	CTN WT.
1080	HORIZONTAL STEEL BASE FOR ABSTRAP™	50	4	7

B DROP WIRE SUPPORT FOR ABSTRAP™



PART#	DESCRIPTION	PKG QTY	CTN QTY	CTN WT.
1076	B DROP WIRE SUPPORT FOR ABSTRAP™	25	8	26



SCREW MOUNTING BASE FOR ABSTRAP™

PART#	DESCRIPTION	PKG QTY	CTN QTY	CTN WT.
1077	#8 SCREW MOUNTING BASE FOR ABSTRAP™	25	4	2
1078	#10 SCREW MOUNTING BASE FOR ABSTRAP™	25	4	2
1079	#14 SCREW MOUNTING BASE FOR ABSTRAP™	25	4	3



ABSTRAP™ KIT

PART#	DESCRIPTION	PKG QTY	CTN QTY	CTN WT.
1083	ABSTRAP™ KIT (10) 50' REELS & (300) BUCKLES	1	1	13
1084	ABSTRAP™ KIT (5) 50' REELS & (150) BUCKLES	1	1	5

LASHED CABLE SUPPORT
LASHED CABLE SUPPORT STAINLESS



PART#	DESCRIPTION	PKG QTY	CTN QTY	CTN WT.
18912	10" LASHED CABLE SUPPORT STAINLESS	25	20	13
18911	10" LASHED CABLE SUPPORT STAINLESS - BULK PACK	500	1	13
18922	16" LASHED CABLE SUPPORT STAINLESS	25	20	20
18921	16" LASHED CABLE SUPPORT STAINLESS - BULK PACK	500	1	19
18932	22" LASHED CABLE SUPPORT STAINLESS	25	12	16
18942	28" LASHED CABLE SUPPORT STAINLESS	4	25	7
18952	34" LASHED CABLE SUPPORT STAINLESS	4	25	8
18956	45" LASHED CABLE SUPPORT STAINLESS	4	25	10
18962	50" LASHED CABLE SUPPORT STAINLESS	4	25	13
18972	66" LASHED CABLE SUPPORT STAINLESS	4	25	14
18982	78" LASHED CABLE SUPPORT STAINLESS	4	25	16

LASHED CABLE SUPPORT ZINC



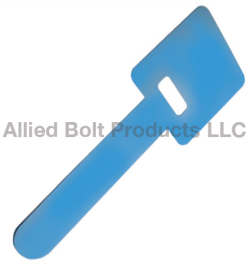
PART#	DESCRIPTION	PKG QTY	CTN QTY	CTN WT.
18910	10" LASHED CABLE SUPPORT ZINC	25	20	13
18909	10" LASHED CABLE SUPPORT ZINC - BULK PACK	500	1	13
18920	16" LASHED CABLE SUPPORT ZINC	25	20	20
18919	16" LASHED CABLE SUPPORT ZINC - BULK PACK	500	1	19
18930	22" LASHED CABLE SUPPORT ZINC	25	12	15
18940	28" LASHED CABLE SUPPORT ZINC	4	25	7

CABLE SPACER
BELL CABLE SPACER



PART#	DESCRIPTION	PKG QTY	CTN QTY	CTN WT.
982	1/4" D SPACER CABLE	100	4	6
983	1/2" D SPACER CABLE	100	4	7
984	3/4" D SPACER CABLE	100	8	13
985	1" D SPACER CABLE	100	1	4
987	1-1/2" SPACER CABLE	100	1	8

Aluminum Ties



SCRIBE ON ALUMINUM TAG
SCRIBE ON ALUMINUM TAG BLUE

PART#	DESCRIPTION	PKG QTY	CTN QTY	CTN WT.
22000B	3-1/4" SCRIBE ON ALUMINUM TAG BLUE	25	40	7



SCRIBE ON ALUMINUM TAG GREEN

PART#	DESCRIPTION	PKG QTY	CTN QTY	CTN WT.
22000G	3-1/4" SCRIBE ON ALUMINUM TAG GREEN	25	40	7



SCRIBE ON ALUMINUM TAG PLAIN

PART#	DESCRIPTION	PKG QTY	CTN QTY	CTN WT.
22000	3-1/4" SCRIBE ON ALUMINUM TAG PLAIN	25	40	7



SCRIBE ON ALUMINUM TAG RED

PART#	DESCRIPTION	PKG QTY	CTN QTY	CTN WT.
22000R	3-1/4" SCRIBE ON ALUMINUM TAG RED	25	40	7



SCRIBE ON ALUMINUM TAG YELLOW

PART#	DESCRIPTION	PKG QTY	CTN QTY	CTN WT.
22000Y	3-1/4" SCRIBE ON ALUMINUM TAG YELLOW	25	40	7



ALUMINUM CABLE TIE
CABLE TIE ALUMINUM

PART#	DESCRIPTION	PKG QTY	CTN QTY	CTN WT.
22110	7" CABLE TIE ALUMINUM	500	1	4
22100	10" CABLE TIE ALUMINUM	500	1	5